

EnRoute

Operationalization of the Urban MAES framework: The City Labs

Grazia Zulian



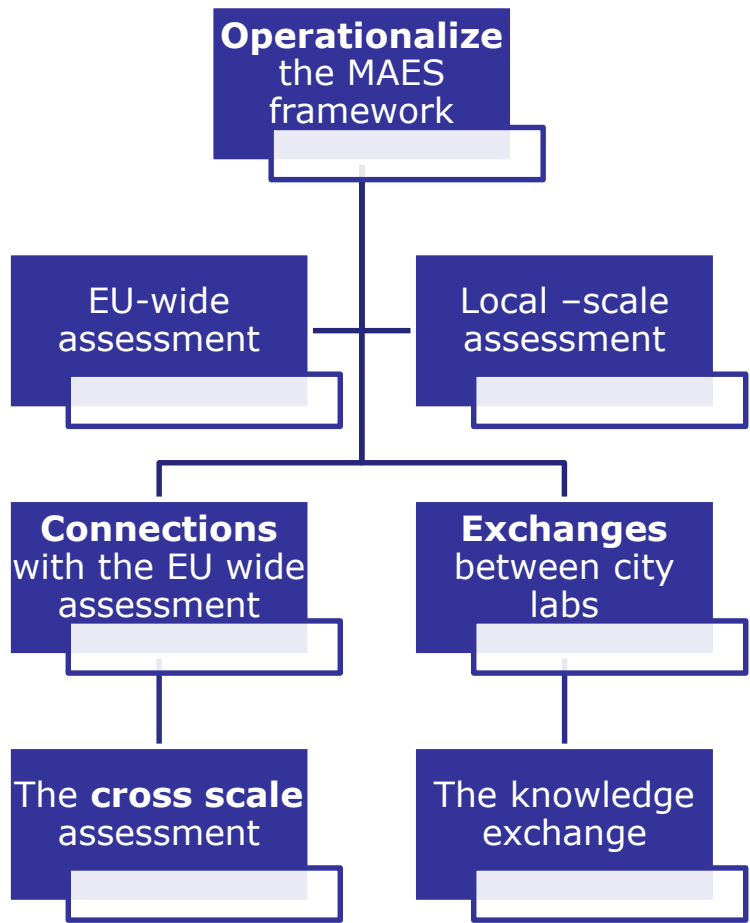
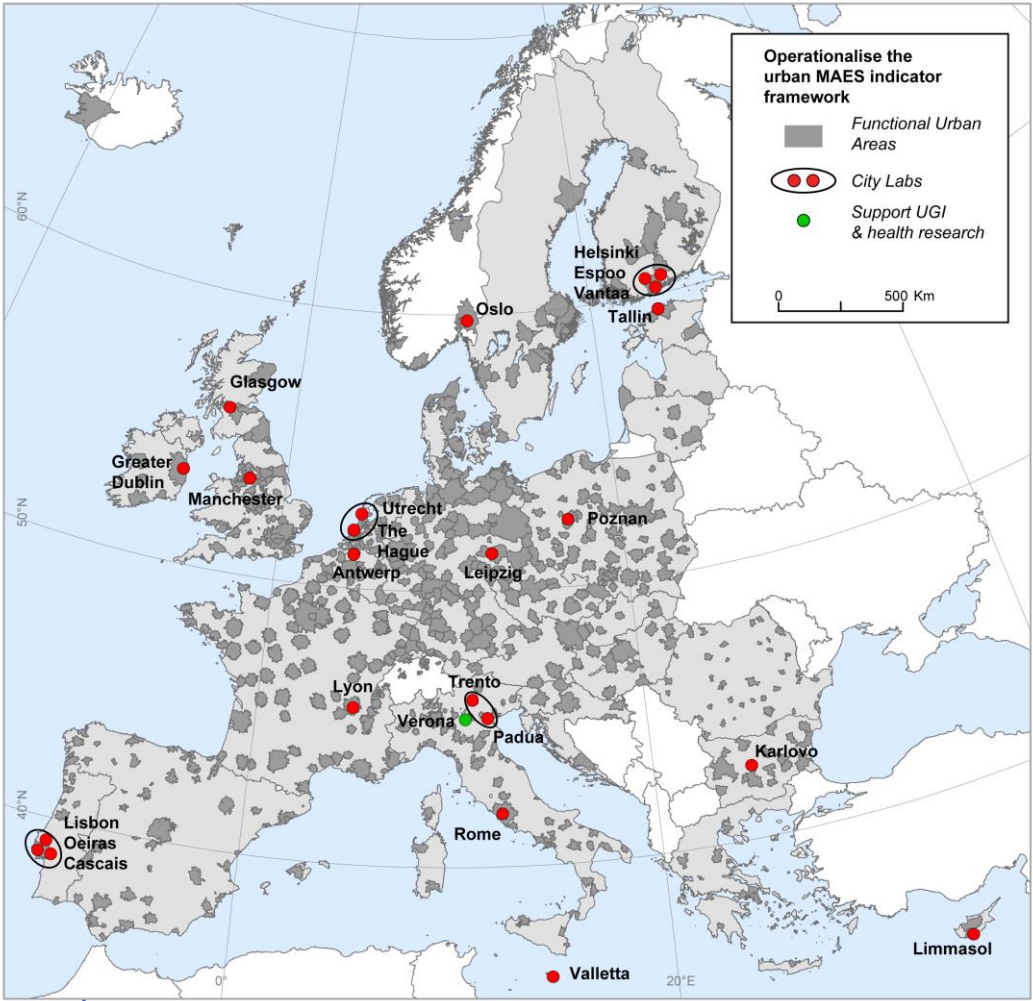
Joint Research Centre

the European Commission's
in-house science service



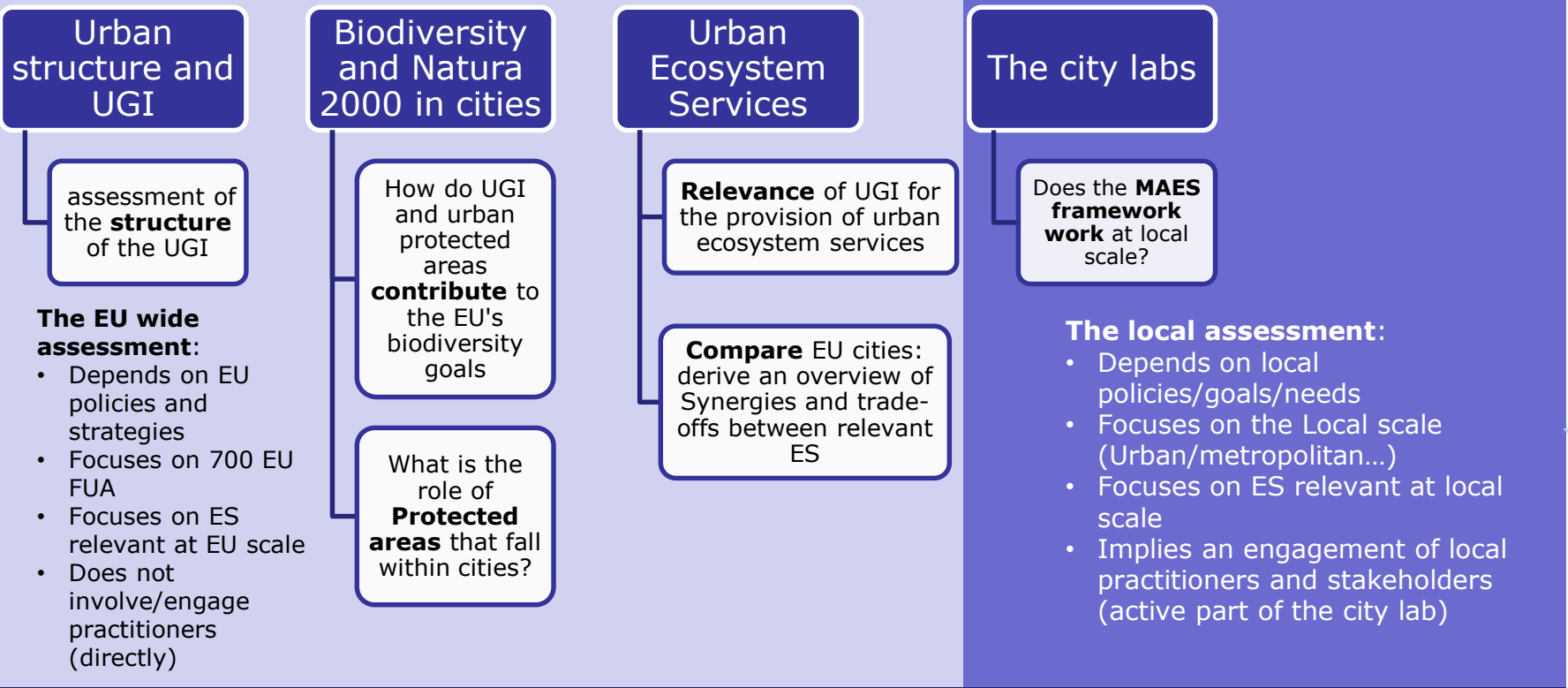
ec.europa.eu/jrc

The purpose of this presentation is to clarify the **role** of the city labs in EnRoute



EU-wide assessment of the structural and functional role of Urban GI focusing on the provision of Urban Ecosystem Services and the role of Protected areas that fall within cities **as support of EU strategies and actions.**

Local assessment of the structural and functional role of Urban GI focusing on specific local needs **as support of local planning goals**



The local assessment

- **Who** are the city labs?
 - The city-labs are **working groups** composed by a researcher and a representative of the city
- **What** do we mean by “operationalize”?
 - **Translate** the concepts of UES into operational frameworks
 - **Co-produce** effective knowledge as support of local urban planning
- **What** do we expect from the city labs?
 - Apply **one** or more indicators (preferably derived from the MAES –framework) relevant to **one key local need (e.g. renewal of local green-spaces)**

How we suggest to proceed:

1. Specify a **key** local policy question

- Each city-lab can focus on a **relevant** local needs/issues or policy goals
- E.g. Renewal of public green spaces at a district level

1. City lab internal discussion
2. City lab workshops and or stakeholders consultation
3. JRC-City-lab(s) web meetings

2. List the relevant UES-UE

- Focus on the **Ecosystem Services** and or Urban Ecosystem Characteristics appropriate to the local context

1. City labs will work on the indicators using local data
2. JRC can assist if needed
3. Through OPPLA we can discuss methodological issues

3. Apply one or more indicators

- Preferably derive the indicators from the MAES list
- The MAES framework can be updated-if you have other suggestions or new indicators

1. City labs send data to the JRC
2. JRC will create the cross-scale assessment and discuss the results with the city labs

4. City-labs cross scale assessment(s)

- A number of assessments will involve different problems across the relevant scales

Example

1. Local Need or interest

- renewal of local public green space
- Using 4 ES indicators we will assess the impact of a renewal action in place in the city of X

2. Urban Ecosystem services

- Recreation
- Sense of Place
- Microclimate
- Noise reduction

3. Indicators

- From the MAES report:
- ESTIMAP-recreation (Nature based recreation Opportunities) (Table 23).
- **Had hoc indicator (not included in the report)**
- Cooling capacity of GI (Table 22)
- Noise reduction rates (Table 22)

4. cross-scale assessment

- Cross scale assessment :
1 - nature based recreation activities from the **local to the EU scale**.
- 2 - microclimate regulation: key drivers from the local to the EU scale

3rd quarter 2017: Delivery of D1 (list with indicators)

2nd semester 2017: Meeting in Tallinn

4th quarter 2017: Delivery of D2 (spatial layers description)

1st semester 2018: Delivery of D3 (spatial data)

1st semester 2018: Meeting in Bulgaria (likely in May)

2nd semester 2018 Meeting in Brussels

2nd semester 2018: Delivery of D4 (description of

The knowledge exchange

OPPLA micro-web site will be used to track the city labs progresses and to exchange ideas and methodologies