

Development and promotion of soft skills competences of OSH Management in extractive industries - focused to SMEs

Presentation of the EC project
VS/2019/0017

Katarzyna Palaczanis, Euromines





OSH Project

Duration, Objective, Funding

- Duration: February 2019 – February 2021 (24 months)
- Development and promotion of soft skills and competences for OSH management system tailor-made to small and medium and micro enterprises of the extractive industries.
- The project is funded by the Social Dialogue Support, DG EMPL, European Commission





OSH Project Participants

- **Lead Applicant**

European Association of Mining Industries (Euromines)

- **Co-Applicant**

Workers' Trade Union (IndustriAll)

- **Associate Organizations**

European Aggregates Association (UEPG)

European Association for Coal and Lignite (EURACOAL)

European Industrial Minerals Association (IMA Europe)

European Association of Potash (APEP)

- **Collaboration**

The associations and the federations representing the employers and the employees from the following EU countries:

Bulgaria



Czech Republic



Hungary



Poland



Spain



- Training material aiming at raising awareness on OSH in the SMEs of the extractive industry and
- A self-assessment tool to perform risk assessment/hazard identification for the evaluation of the OSH status before and after the training.



The work programme is composed of five main tasks:



Data Collection for the identification of OSH status of extractive (SMEs) industries.



Evaluation OSH needs of the extractive industries.



Development of the supporting material for promoting OSH soft skills and competences in the extractive SMEs



Design a website





Final dissemination of the project results

Data collection for the identification of OSH status of extractive (SMEs) industries

Duration: 6 months

- Collection of OSH legislation and management approaches for compliance with legal requirements
- Collection of literature for the identification of the most common risks of the SMEs of the extractive industry in EU
- Development of a standard questionnaire template for the investigation mining sector status of in OSH
- Technical support for the completion of the fact-sheets by national associations from participating Member States: Bulgaria, Czech Republic, Hungary, Poland, Spain (BG, CZ, HU, PL, ES)
- Collection of fact sheets for BG, CZ, HU, PL, ES

Development and promotion of soft skills and competences of OSH
Management in extractive enterprises focused to SMEs

Objective of the Questionnaire

The objective of the program is the development and promotion of soft skills and competences for OSH management system tailor-made to small – medium and micro enterprises of the extractive sector.

The questionnaire aims to identify the way Occupational Safety and Health (OSH) is approached by SMEs across the extractive sector for the following countries: Bulgaria, Czech Republic, Hungary, Poland and Spain. The participants will have to respond to 30 questions which will be used to identify the gaps in OSH management: the mining company and will provide a deeper understanding of the emerging risks arising in this sector. The participant should provide a few details on mining sub-sector they represent.

- 1) Alignment of national OSH legislation with the European Legislation
- 2) Risks per sector or sub-sector, it is advisable to focus on SMEs of the extractive industry
- 3) Use of e-tools for risk assessment (e.g. OIRA tool)
- 4) Strong and weak points in OSH in the extractive industries' sectors of each country
- 5) Suggestions for improvements
- 6) Expertise in the field of OSH

Brief instructions on the completion

The purpose of the general instructions is to help the person completing the questionnaire. This questionnaire is consisted of questions that require completion, multiple choice questions and questions that the responses should be rated on a specific scale. The latter will allow to prioritize the key issues of OSH management in extractive SMEs and contractors employed in the sector. Any additional comments with respect to strengths, weaknesses, common practices and / or suggestions for improvements are valuable. Please, use the open fields to provide us with any further expertise you have with respect to OSH management of extractive SMEs and contractors.

Finally, do not hesitate to send us any supporting material with respect to the issues covered by this questionnaire.

Name & contact details :

.....

.....

General Details

1	Date:	
2	Member State	
3	Please, provide an estimate number of SMEs compared to the total number extractive companies you represent / Total number:.....
4	Please, provide an estimate number of employees occupied by SMEs compared to the total number of employees occupied by all the extractive companies you represent / Total number:.....
5	Please, provide an estimate number of contractors (and subcontractors) that are involved in the activities of the companies you represent	
6	Please, provide if the extractive industries you represent follow surface and/or underground activities	<input type="checkbox"/> Surface <input type="checkbox"/> Underground <input type="checkbox"/> Both

The questionnaire has been prepared by Eco-Efficiency Ltd. 1

Evaluation of MS factsheets OSH of the management of OSH with respect to legal requirements

Duration: 6 months

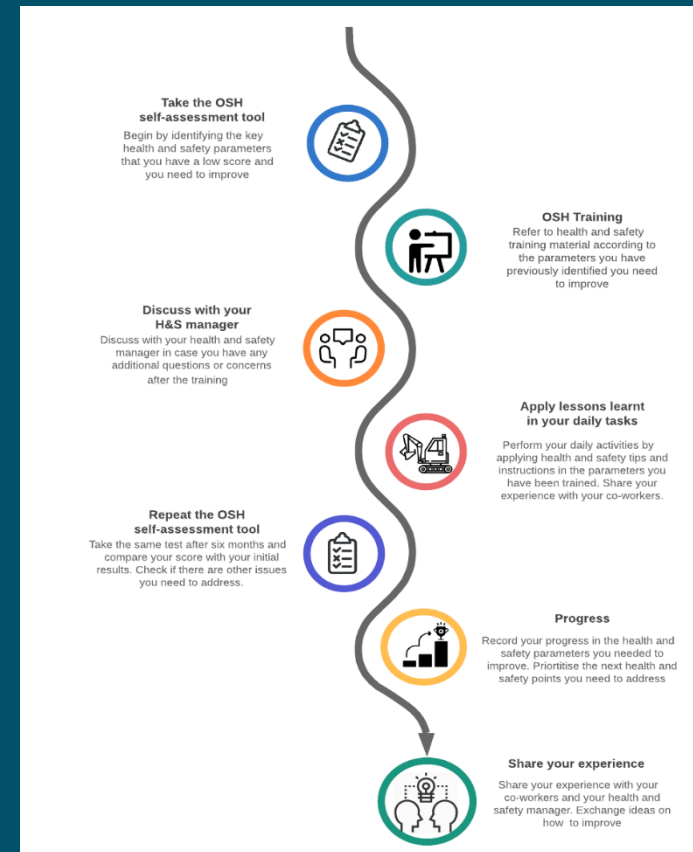
- Analysis and Evaluation of MS factsheets
- Reporting – OSH needs identification
- Workshop with Stakeholders
- Preparation of the Workshop report



Development of supporting material for establishing OSH soft skills and competences in the extractive SME

Duration: 13months

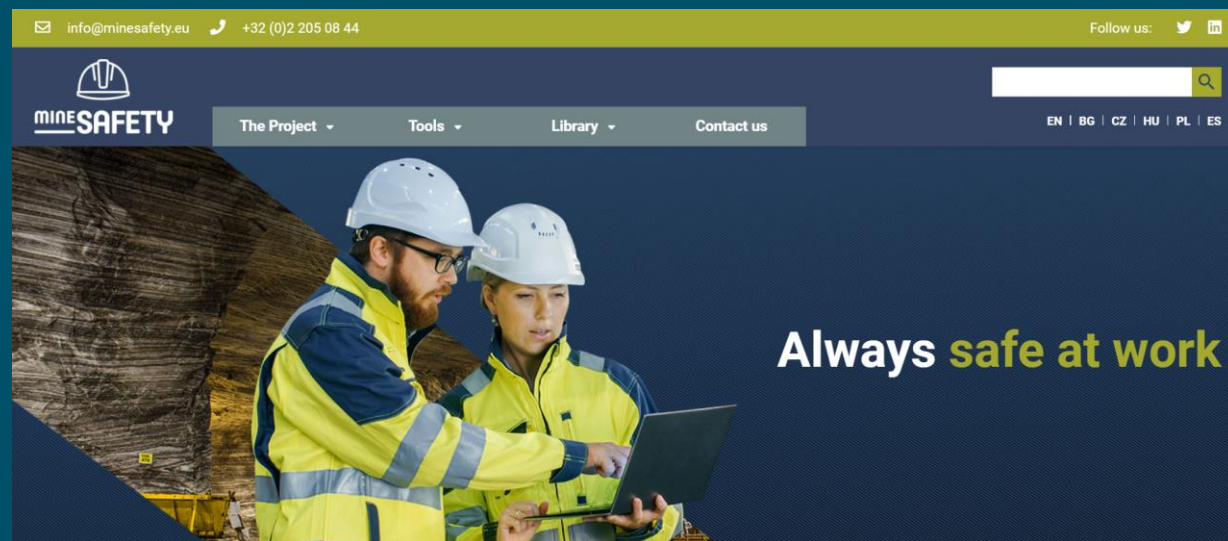
- Training material for OSH soft skills promotion via “train the trainers” scheme
- Self-assessment tool for the evaluation of OSH status in the company
- Translation of the training material and into the 5 official languages of the participating MS in the project
- Comments and suggested improvements for the OSH soft-skills and the self-assessment tool
- Revision of the tools and update the training material for the OSH soft-skills and the self assessment tool



Design, development and testing of website

Duration: 12 months

- Description of the OSH Portal according to the list of contents and the contents from previous tasks
- Design, development and test of website
- Roll-out of the website
- Website updates



Final dissemination action

Duration: 2 months

<https://minesafety.eu/>

Self-assessment tool

The self-assessment tool is designed to assist the workers of extractive SMEs to review the basics of health and safety summarizing the basic principles of OSH, legal requirements, distribution of roles, the simplified risk assessment techniques for common and emerging risks of mining activities such as explosives, vibrations, noise, and mobile equipment. The self-assessment tool is also addressed to contractors that may be present at an extractive site...

[READ MORE](#)



Training material

The training material is developed to provide to the employees of the extractive sector with basic knowledge and skills on how to protect themselves and the people they work with in their daily activities...

[READ MORE](#)



Useful OSH links

In this subsection of the website you will find a selection of useful OSH links...

[READ MORE](#)

Library

learn more about EU Legislation and National legislation on Occupational Health & Safety on our library page...

[READ MORE](#)

