

National Summary for Article 12

1. General information

1.1 Number and area of SPAs

The table below provides the total number and total area of sites designated under the Birds Directive (Special Protection Areas, SPAs), terrestrial area of sites and number and area of marine sites (i.e. any site with a marine component).

Empty cells in tables mean that the component requested was not applicable.

All		Terrestrial	Marine	
No.	Area (km ²)	Area (km ²)	No.	Area (km ²)
30	1642,44	1532,75	3	109,69
Date of database used: 01-11-2012				

1.2 Number of SPAs with comprehensive management plans

Number of SPAs for which comprehensive management plans have been adopted: **0**

Percentage of the network area covered by comprehensive management plans: **20%**

Number of sites for which management plans are under preparation (optional field): **30**

1.3 Research and other work on bird populations

This section provides an indication of whether any of the activities listed in the section 6 of the General report have been carried out during the reporting period (for more details and references see the General report - the link to the report is given after the section 7 of this national summary).

National bird atlas: **no**

National bird monitoring overview(s): **yes**

National bird red list: **no**

Other publication(s) of EU-wide interest: **no**

2. Number of bird species/populations

This section provides a summary of the number of bird taxa (species and subspecific populations) for which a species-based report was completed, including a breakdown by season, and by subsets (e.g. Annex I, SPA trigger and non-native species).

Season	All native taxa	Annex I	SPA trigger	Non-native
Breeding	95	30	22	0
Wintering	31	7	10	0
Passage	24	17	24	0
Total	150	54	56	0

Note: These statistics are based on the revised checklists. The harmonisation of the codes used for 'presence status' was needed and the summary of changes in comparison to the reported information by the Member State can be consulted through this link: http://bd.eionet.europa.eu/activities/Reporting_Tool/Documents/Art_12_checklist_changes.

Occasional or vagrant species, and species that went extinct nationally prior to 1980 (i.e. around the time the Birds Directive came into force), if indicated are excluded.

Number of taxa that went extinct nationally after 1980: **1**

Number of newly arriving taxa: **2**

Number of taxa on checklist for which no reports received: **none**

3. Information on trends

This section provides information about trends of national bird populations.

Note: Article 12 reporting covers only a subset of Wintering taxa occurring in the national territory.

3.1 Population trends

The graphs show the percentages of taxa reported as having decreasing, stable, fluctuating, increasing or unknown population trends. Both short- and long-term population trends are included. The percentages are shown separately for breeding and wintering taxa.

Note: The trend category ‘unknown’ may include also taxa on the checklist for which no trend information was provided.



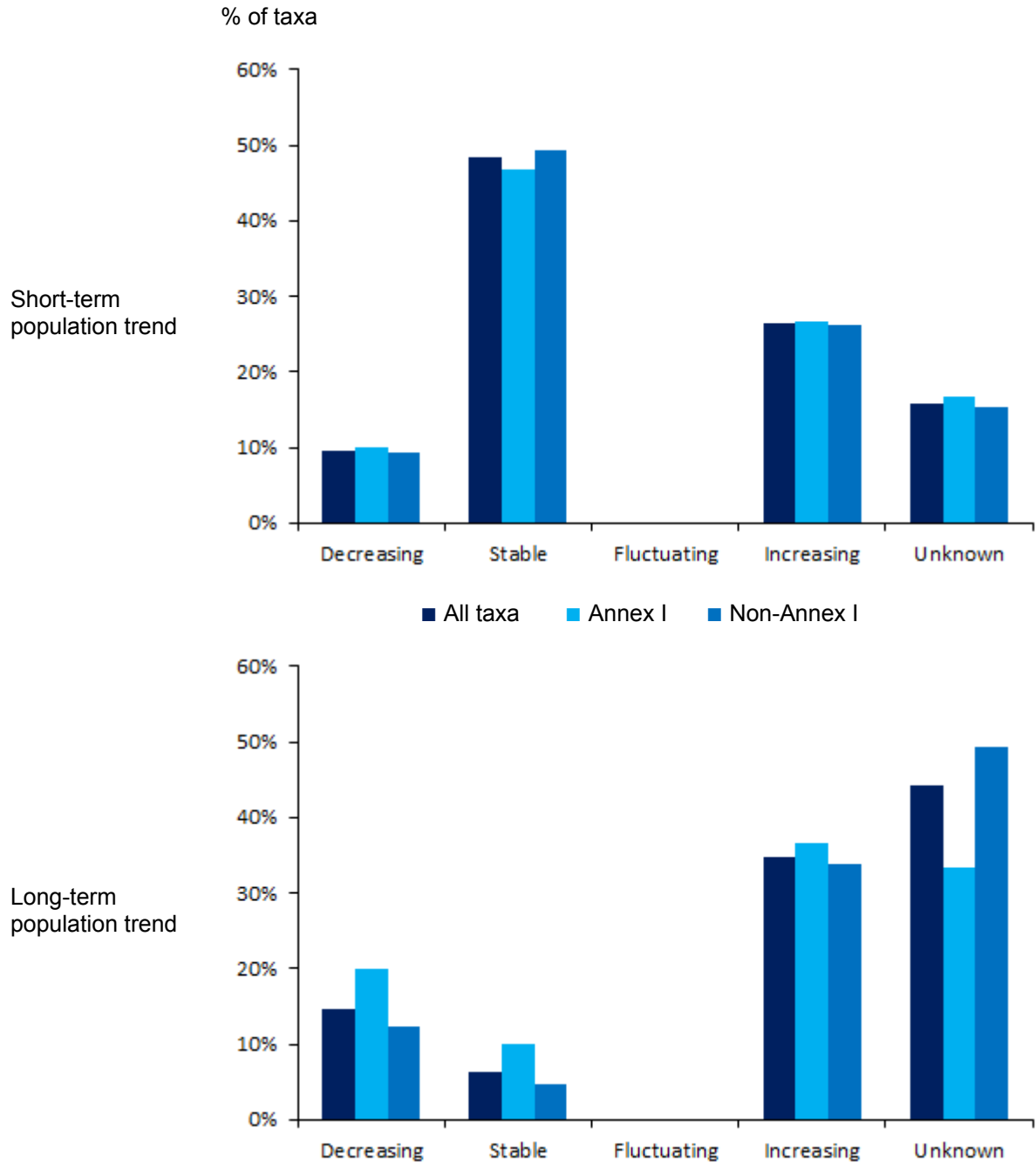
The table shows the numbers of taxa reported as having decreasing, stable, fluctuating, increasing or unknown population trends.

Population trend	Breeding taxa		Wintering taxa	
	Short-term	Long-term	Short-term	Long-term
Decreasing	9	14	8	6
Stable	46	6	12	4
Fluctuating				
Increasing	25	33	11	20
Unknown	15	42		1

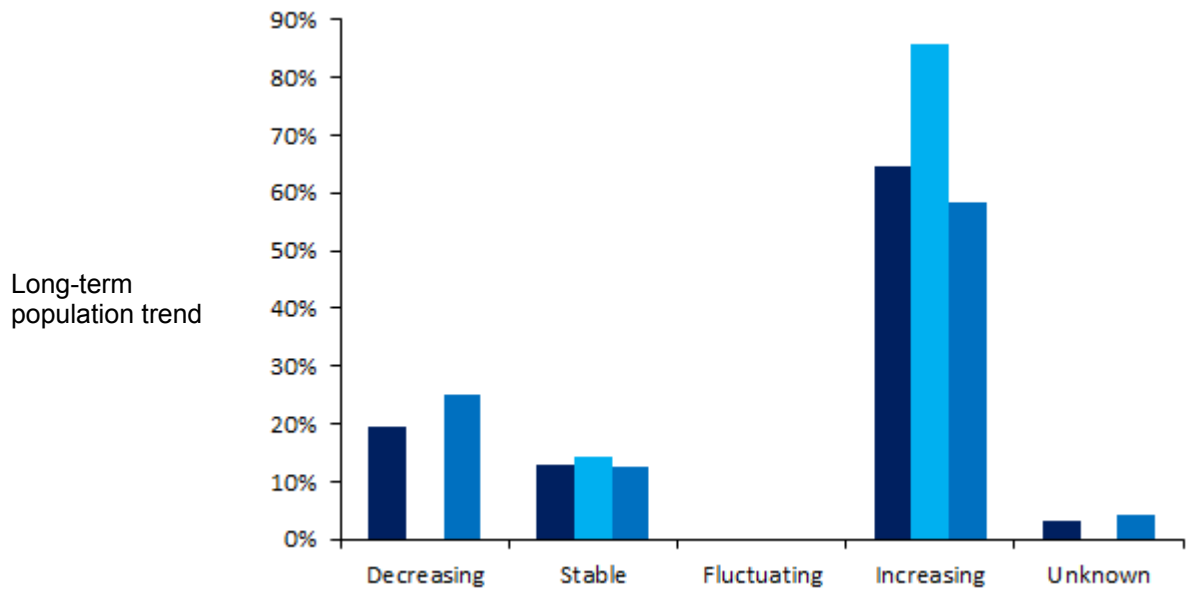
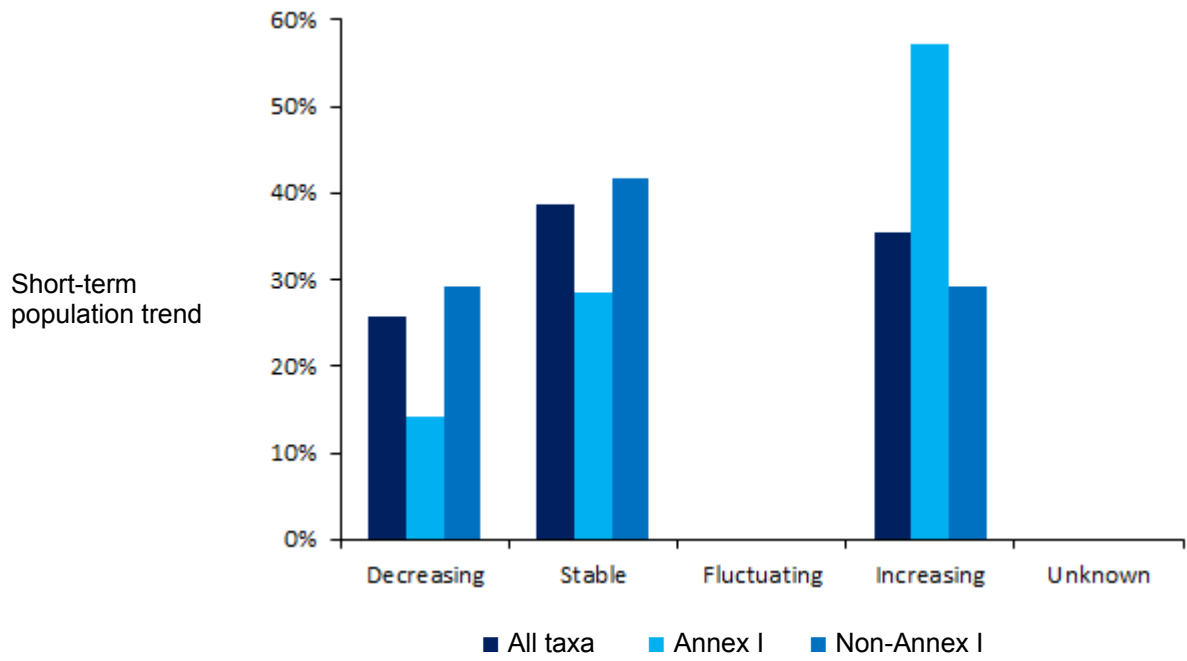
3.2 Comparison of population trends for subsets of taxa

The graphs show the percentages of taxa (all, Annex I and non-Annex I) within the different trend categories (see section 3.1). Both short- and long-term population trends are included. The graphs show results separately for breeding and wintering taxa.

Breeding taxa



Wintering tax



The tables show the numbers of taxa (all, Annex I and non-Annex I) within the different trend categories.

Breeding taxa

Population trend	Short-term			Long-term		
	All taxa	Annex I	Non-Annex I	All taxa	Annex I	Non-Annex I
Decreasing	9	3	6	14	6	8
Stable	46	14	32	6	3	3
Fluctuating						
Increasing	25	8	17	33	11	22
Unknown	15	5	10	42	10	32

Wintering taxa

Population trend	Short-term			Long-term		
	All taxa	Annex I	Non-Annex I	All taxa	Annex I	Non-Annex I
Decreasing	8	1	7	6		6
Stable	12	2	10	4	1	3
Fluctuating						
Increasing	11	4	7	20	6	14
Unknown				1		1

3.3 Comparison of short- and long-term population trends

This section provides a comparison of short- and long-term population trends for taxa, highlighting combinations that represent potential improvements (in green) and deteriorations (in red) in their national status. The tables in this section show the numbers of taxa for each combination of short- and long-term trends.

Breeding taxa

Long-term population trend	Short-term population trend					Total
	Decreasing	Stable	Fluctuating	Increasing	Unknown	
Decreasing	2	9			3	14
Stable	1	2		2	1	6
Fluctuating						
Increasing		15		16	2	33
Unknown	6	20		7	9	42
Total	9	46		25	15	95

Wintering taxa

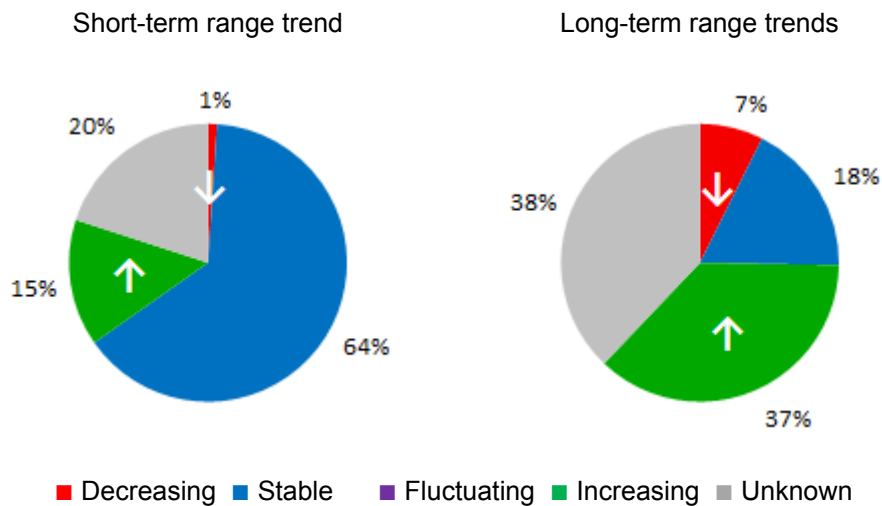
Long-term population trend	Short-term population trend					Total
	Decreasing	Stable	Fluctuating	Increasing	Unknown	
Decreasing	3	1		2		6
Stable	1	3				4
Fluctuating						
Increasing	3	8		9		20
Unknown	1					1
Total	8	12		11		31

3.4 Breeding range trends

Summary of the direction of short- and long-term range trends for breeding taxa.

The graphs show the percentages of taxa reported as having decreasing, stable, fluctuating, increasing or unknown breeding range trends. Both short- and long-term trends are included.

Note: The trend category 'unknown' may include also taxa on the checklist for which no trend information was provided.

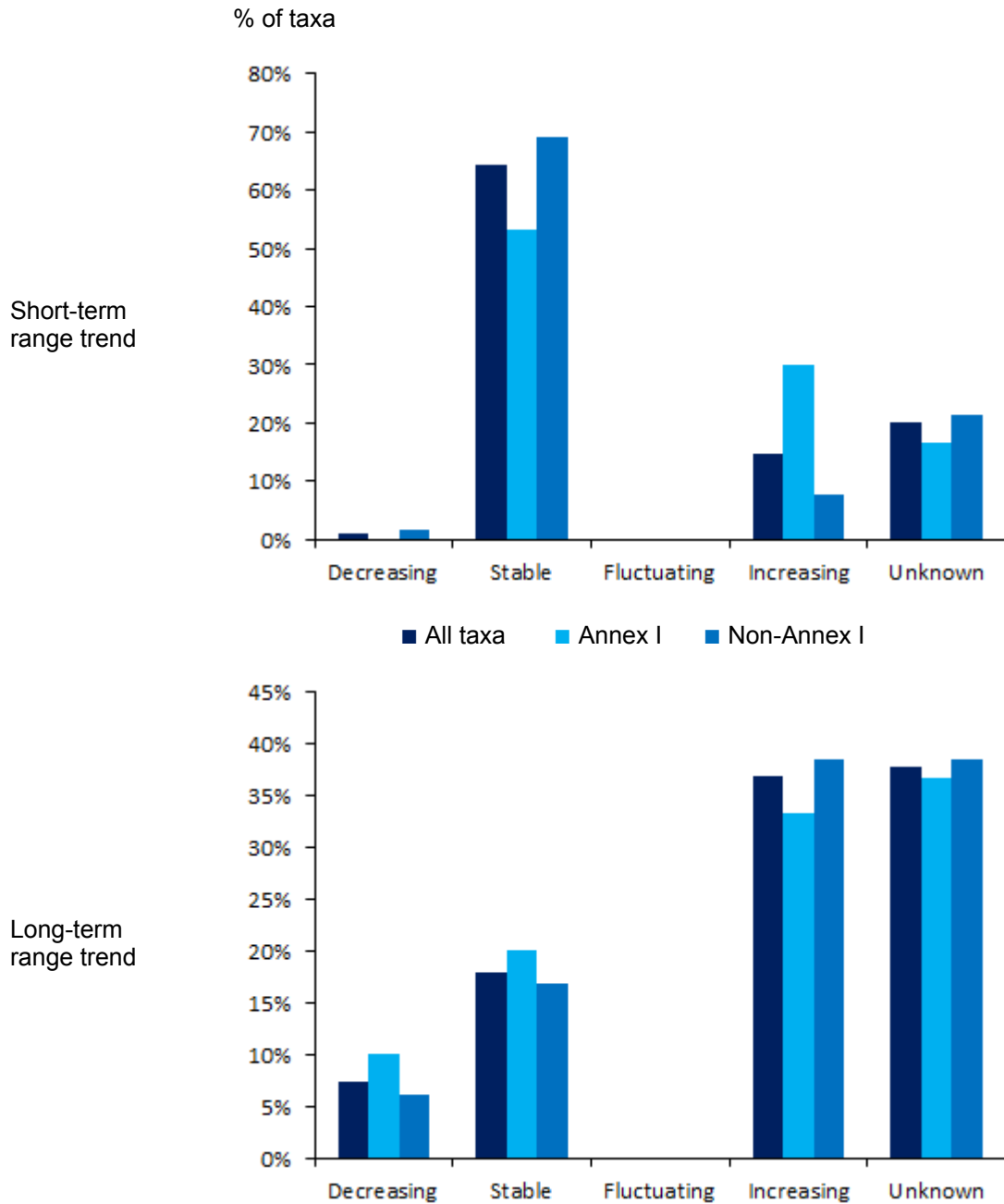


The table shows the numbers of taxa reported as having decreasing, stable, fluctuating, increasing or unknown range trends.

Breeding range trend	Breeding taxa	
	Short-term	Long-term
Decreasing	1	7
Stable	61	17
Fluctuating		
Increasing	14	35
Unknown	19	36

3.5 Comparison of breeding range trends for subsets of taxa

The graphs show the percentages of bird taxa (all, Annex I and non-Annex I) within the different trend categories (see section 3.4). Both short- and long-term population trends are included.



The table shows the numbers of bird taxa (all, Annex I and non-Annex I) within the different trend categories.

Population trend	Short-term			Long-term		
	All taxa	Annex I	Non-Annex I	All taxa	Annex I	Non-Annex I
Decreasing	1		1	7	3	4
Stable	61	16	45	17	6	11
Fluctuating						
Increasing	14	9	5	35	10	25
Unknown	19	5	14	36	11	25

3.6 Comparison of short- and long-term range trends

This section provides a comparison of short- and long-term range trends for taxa, highlighting combinations that represent potential improvements (in green) and deteriorations (in red) in national status. The table in this section shows the numbers of taxa for each combination of short- and long-term trends.

Long-term range trend	Short-term range trend					Total
	Decreasing	Stable	Fluctuating	Increasing	Unknown	
Decreasing	1	4		1	1	7
Stable		16		1		17
Fluctuating						
Increasing		19		11	5	35
Unknown		22		1	13	36
Total	1	61		14	19	95

4. Implementation of international species plans

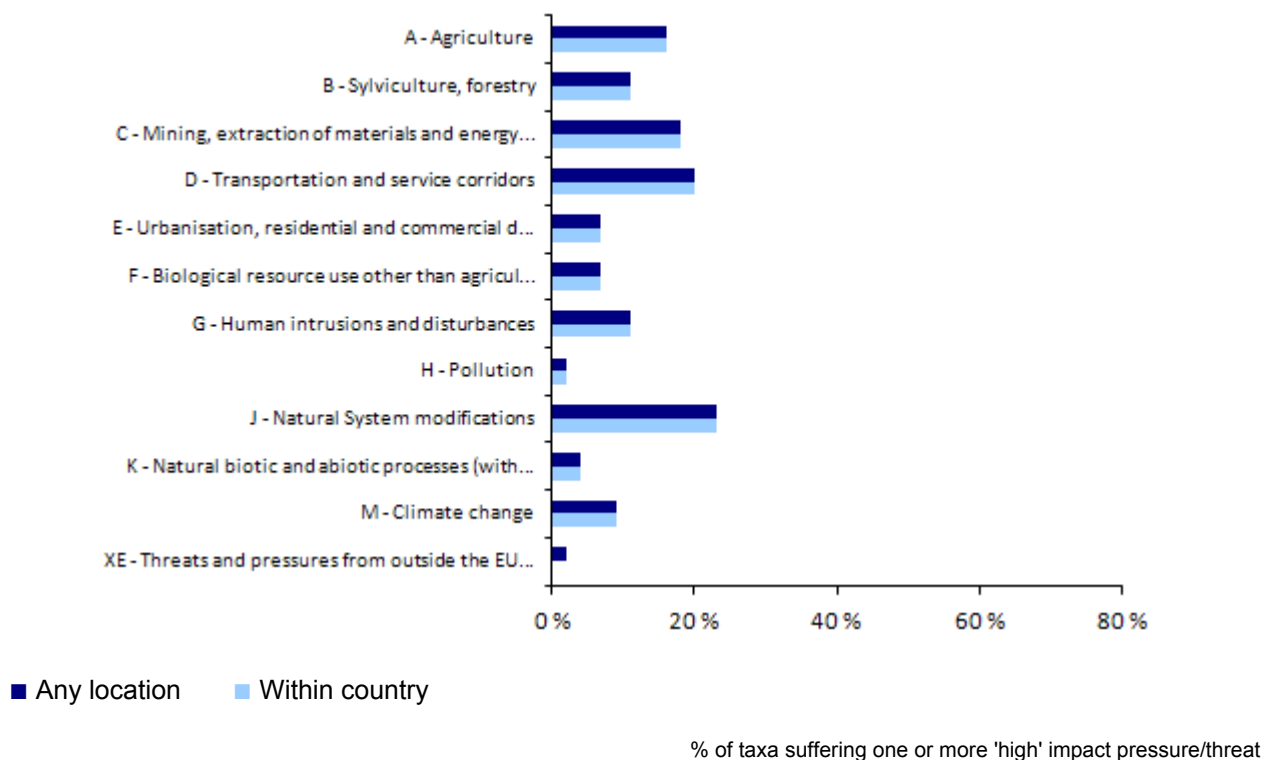
This section provides a summary of national implementation of international Species Action Plans (SAPs), Management Plans (MPs) and Brief Management Statements (BMSs) containing proposed actions in the Member State. The table shows the number of taxa with international plans and the number with national plans adopted.

Type of plan	No. of taxa with international SAP, MP and BMS	No. of taxa with national plan adopted
Species Action Plan (SAP)	12	
Management Plan (MP)	8	
Brief Management Statement (BMS)		

5. Frequency of main pressures and threats

This section provides a summary of the main pressures/threats reported for taxa triggering SPA classification nationally. Only pressures/threats reported as having 'high' impact are considered in this section (one or more pressures/threats under each of the level 1 categories). For these high-impact pressures/threats a distinction is made in the bar-chart of those pressures/threats reported by the MS as primarily operating inside the Member State, or elsewhere.

Note: The figures under section 5 cover only taxa triggering SPA classifications nationally, i.e. those listed in Annex I, plus a selection of key migratory taxa for which SPAs have been classified, as identified in the species checklist.



Note: Threat/pressure categories not reported are omitted.

Total number of taxa considered in the calculation: **56**

Number of taxa with no high ranking pressure/threat within country (or no pressure/threat reported): **14**

Number of taxa with no high ranking pressure/threat in any location (or no pressure/threat reported): **14**

Pressure and threat categories	Number of taxa for which this threat/pressure was reported as having a 'high' impact
A - Agriculture	9
B - Sylviculture, forestry	6
C - Mining, extraction of materials and energy production	10
D - Transportation and service corridors	11
E - Urbanisation, residential and commercial development	4
F - Biological resource use other than agriculture & forestry	4
G - Human intrusions and disturbances	6
H - Pollution	1
J - Natural System modifications*	13
K - Natural biotic and abiotic processes (without catastrophes)	2
M - Climate change	5
XE - Threats and pressures from outside the EU territory	1

*e.g. fire and fire suppression, dredging, water abstractions from surface waters

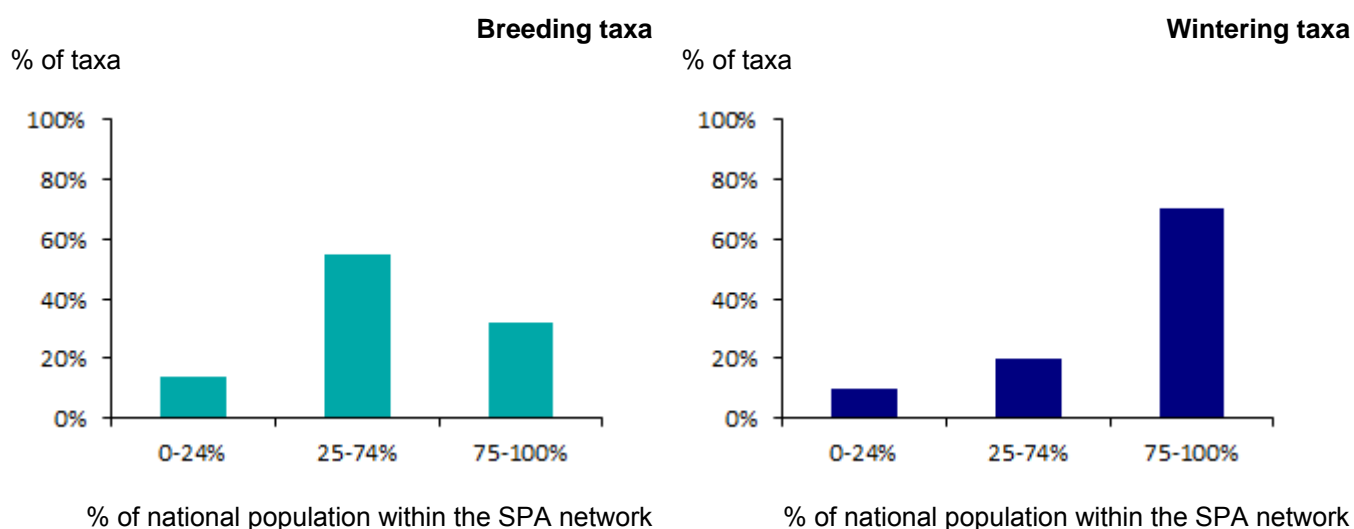
6. SPA coverage and conservation measures

Note: The figures under section 6 cover only taxa listed in Annex I, plus a selection of key migratory taxa for which SPAs have been classified nationally, as identified in the species checklist.

6.1 Coverage of SPA trigger species populations by SPA network

This section provides a summary of the proportions of national populations of SPA trigger taxa occurring within the national SPA network. These graphs (separate graphs for wintering and breeding taxa) show the percentages of reported SPA trigger taxa in three classes based on their coverage by SPAs.

The geometric mean is used if Member States have reported minimum and maximum values. The table below shows the figures on which the calculations are based.

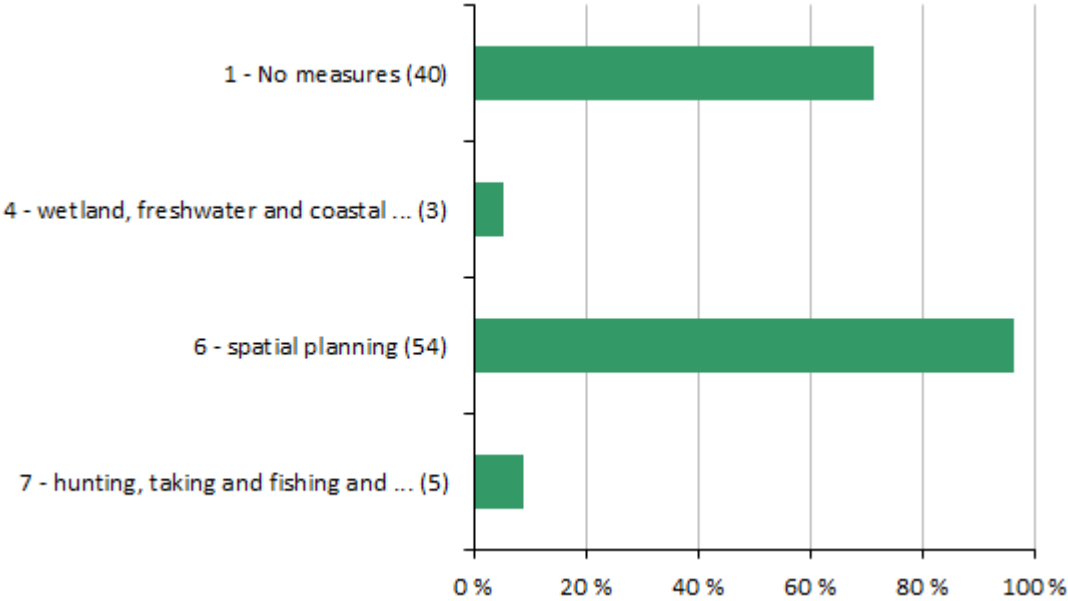


This table shows the number of reported SPA trigger taxa in three classes based on their coverage by SPA sites.

Taxa	Number of taxa				Total
	0-24%	25-74%	75-100%	unknown or not relevant	
Breeding taxa	3	12	7		22
Wintering taxa	1	2	7		10

6.2 Main conservation measures

This section provides information on the relative importance of conservation measures at level 1 implemented during the reporting period for SPA trigger taxa. The graph shows the percentages of taxa for which one or more 'high' importance conservation measure was implemented.



% of taxa for which one or more 'high' impact measures were reported

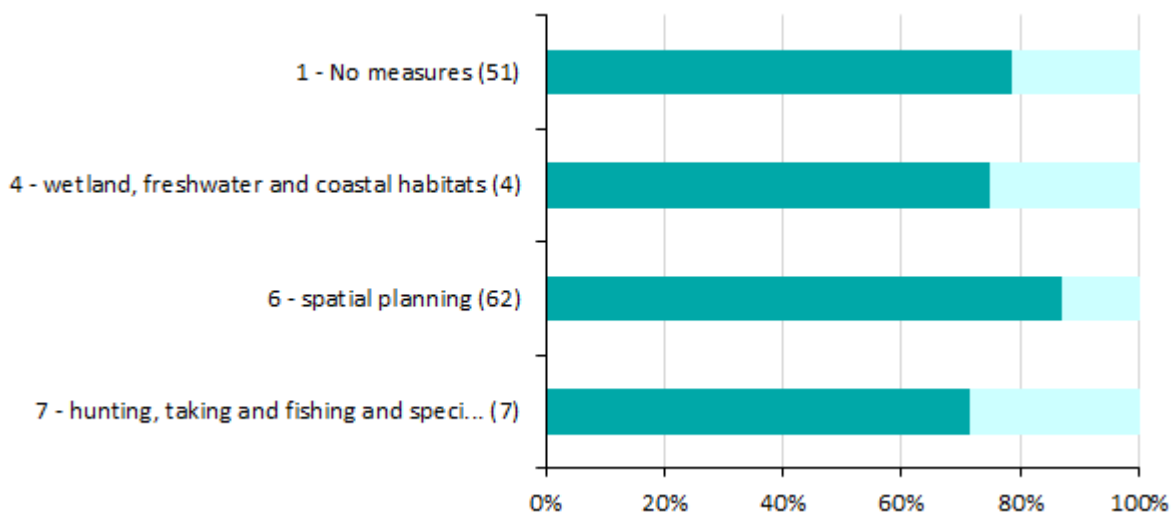
Note: Numbers in brackets correspond to the numbers of reports where measure 1, 2, etc. is noted as being of high importance. Measures not reported are omitted.

Total number of assessments considered in the calculation: **56**

Number of assessments with no high ranking conservation measures or no conservation measures at all reported: **1**

6.3 Impact of conservation measures

This section provides information on effects of implemented conservation measures for each level 1 measure category. The figure shows, for each level 1 measure category, the frequency of reported effects. The table below shows the figures on which the calculations are based (full names of the measures are shown in the table).



% of bird taxa for which a particular effect of a 'high' impact measure was reported

■ maintain ■ enhance ■ longterm ■ no effect ■ unknown or not evaluated

Note: The numbers in brackets correspond to the total number of reported effects for all 'high' importance measures.

Measure	Number of reports				
	maintain	enhance	longterm	no effect	unknown or not evaluated
1 - No measures	40	11			
4 - Measures related to wetland, freshwater and coastal habitats	3	1			
6 - Measures related to spatial planning	54	8			
7 - Measures related to hunting, taking and fishing and species management	5	2			

The following categories were used by the Member States to show effects of implemented conservation measures:

- Maintain** – when the conservation measure is required to maintain the population size on the present level and/or to prevent any declining trend.
- Enhance** – when the conservation measure is required to increase the population size from a currently low level and/or to prevent a further declining trend – alone or in conjunction with other measures.
- Long-term** – measure without short-term effect – one reporting cycle or less – but long-term positive effect in terms of increase of population size and/or turning a declining trend is expected.
- No effect** – measure without effect or that needs adaptation and that is not delivering any conservation benefit; measure failed in achieving its objectives or had adverse effects.
- Unknown** effect.
- Not evaluated** - if the effect of the measure has not been evaluated.

7. Data quality and completeness

7.1 Mandatory information missing or reported as unknown (%)

The aim of this section is to provide an overview of the data gaps in the report; most of these gaps are due to insufficient knowledge. This section does not refer to potential errors or technical problems in the Member State's report and concentrates on what is relevant for evaluating data completeness.

The tables give the percentages of bird taxa with unknown or missing information for components of bird status.

Note: The statistics on missing and unknown information may also include missing and unknown information for recent coloniser, species which are on verge of extinction or species with marginal population in the national territory for which certain fields in the reporting format may not be relevant and therefore corresponding information was not reported.

7.1 a) Mandatory information missing (%)

Population (breeding)	Size	0
	Trend (short)	0
	Trend (long)	0
Population (winter)	Size	0
	Trend (short)	0
	Trend (long)	0
Range (breeding)	Area	0
	Trend (short)	0
	Trend (long)	0
Pressures & threats		0
SPA network	Coverage	0
	Measures	0
Maps		0

7.1. b) Mandatory information reported as unknown (%)

Population (breeding)	Size	0
	Trend (short)	16
	Trend (long)	46
Population (winter)	Size	0
	Trend (short)	0
	Trend (long)	3
Range (breeding)	Area	0
	Trend (short)	21
	Trend (long)	39
Pressures & threats		0
SPA network	Coverage	0
	Measures	0
Maps		0

7.2 Data quality reported for key population and range parameters (%)

This section presents statistics on the data quality reported by Member States for key parameters of bird status.

Data quality	Breeding population			Breeding range			Wintering population		
	Size	Trend (short)	Trend (long)	Area	Trend (short)	Trend (long)	Size	Trend (short)	Trend (long)
Good (%)	26	19	12	26	23	11	94	39	3
Moderate (%)	55	56	20	68	28	20	6	61	81
Poor (%)	19	12	24	5	28	32	0	0	13
No data (%)	0	14	44	0	20	38	0	0	3

Source of information:

[Link to the national general report on CDR](#)

[Link to the national report for birds on CDR](#)

8. Bird species/subspecific populations reported

This section provides the list of bird taxa reported by the Member State, and the population size and short-term population trend direction ('+' increasing, '-' decreasing, '0' stable, 'F' fluctuating, 'x' unknown) for breeding and wintering taxa (the order of species follows the alphabetical order). For SPA trigger taxa occurring on passage an indication of presence or the size of the population is also provided.

For breeding taxa, population size is reported as number of breeding pairs, with just a few exceptions (which are indicated in the table), whereas population sizes for all wintering and passage taxa are in individuals.

Taxa listed on Annex I of the Directive are identified with a 'Y' in the 'Annex I' column. If the Member State reported on non-native taxa (other than for the three taxa listed in Annex II of the Birds Directive) the summary on these taxa is given in a separate table.

Code	Species/subspecific population	Annex I	Breeding	Wintering	Passage
A619	<i>Accipiter gentilis gentilis</i>	N	80-120 (+)		
A297	<i>Acrocephalus scirpaceus</i>	N	100-300 (x)		
A411	<i>Alectoris chukar</i>	N	60000-120000 (0)		
A054	<i>Anas acuta</i>	N		40-125 (-)	
A056	<i>Anas clypeata</i>	N	1-2 (+)	1100-1700 (-)	
A704	<i>Anas crecca crecca</i>	N		1500-3000 (0)	
A050	<i>Anas penelope</i>	N		150-900 (0)	
A705	<i>Anas platyrhynchos platyrhynchos</i>	N	30-100 (+)	800-1400 (0)	
A055	<i>Anas querquedula</i> [Western Siberia & Europe/West Africa]	N	1-3 (0)		
A703	<i>Anas strepera strepera</i>	N		5-40 (-)	
A394	<i>Anser albifrons albifrons</i>	N		25-50 (-)	
A226	<i>Apus apus</i>	N	15000-60000 (-)		
A227	<i>Apus pallidus</i>	N	200-1000 (x)		
A707	<i>Aquila fasciatus</i>	Y ^b	40-50 (+)		
A404	<i>Aquila heliaca</i>	Y	0 (0)		
A699	<i>Ardea cinerea cinerea</i>	N		135-240 (+)	P
A635	<i>Ardeola ralloides ralloides</i>	Y ^a	2-7 (+)		P
A221	<i>Asio otus</i>	N	50-200 (0)		
A218	<i>Athene noctua</i>	N	4000-10000 (0)		
A059	<i>Aythya ferina</i>	N		60-490 (+)	
A061	<i>Aythya fuligula</i>	N		2-20 (-)	
A060-B	<i>Aythya nyroca</i> [Eastern Europe/E Mediterranean & Sahelian Africa]	Y	1-6 (+)	45-75 (+)	
A696	<i>Bubulcus ibis ibis</i>	N	35-90 (+)	200-550 (+)	
A133	<i>Burhinus oedicnemus</i>	Y	300-1000 (x)		
A087	<i>Buteo buteo</i>	N			P
A403	<i>Buteo rufinus</i>	Y	62-64 (+)		
A243	<i>Calandrella brachydactyla</i>	Y	50-500 (x)		
A145	<i>Calidris minuta</i>	N		140-320 (0)	
A224	<i>Caprimulgus europaeus</i>	Y	1500-3000 males (x)		
A366	<i>Carduelis cannabina</i>	N	20000-60000 (-)		
A364	<i>Carduelis carduelis</i>	N	70000-150000 (-)		
A745	<i>Carduelis chloris</i>	N	40000-120000 (0)		
A469	<i>Certhia brachydactyla dorotheae</i>	Y	3500-6750 (0)		

Code	Species/subspecific population	Annex I	Breeding	Wintering	Passage
A288	<i>Cettia cetti</i>	N	25000-90000 (+)		
A682-B	<i>Charadrius alexandrinus alexandrinus</i> [Black Sea & East Mediterranean/Eastern Sahel]	Y ^a	35-160 (0)	400-600 (+)	P
A726	<i>Charadrius dubius curonicus</i> [Europe & North-west Africa/West Africa]	N	9-29 (0)		
A668	<i>Charadrius leschenaultii columbinus</i> [Turkey & SW Asia/E. Mediterranean & Red Sea]	N		25-60 (+)	P
A081	<i>Circus aeruginosus</i>	Y		10-25 (0)	P
A082	<i>Circus cyaneus</i>	Y			P
A083	<i>Circus macrourus</i>	Y			P
A084	<i>Circus pygargus</i>	Y			P
A289	<i>Cisticola juncidis</i>	N	40000-120000 (+)		
A211	<i>Clamator glandarius</i>	N	3000-5000 (0)		
A206	<i>Columba livia</i> [livia and domestica]	N	2000-7000 (0)		
A687	<i>Columba palumbus palumbus</i>	N	30000-70000 (0)		
A231	<i>Coracias garrulus</i>	Y	1000-3000 (-)		
A350	<i>Corvus corax</i>	N	2-6 (-)		
A742	<i>Corvus corone cornix</i>	N	20000-45000 (+)		
A347	<i>Corvus monedula</i>	N	10000-30000 (0)		
A113	<i>Coturnix coturnix</i>	N	2000-5000 cmales (0)		
A738	<i>Delichon urbicum</i>	N	10000-60000 (0)		
A697	<i>Egretta garzetta garzetta</i>	Y ^a	1-6 (+)		P
A447	<i>Emberiza caesia</i>	Y	10000-20000 (+)		
A382	<i>Emberiza melanocephala</i>	N	7000-15000 (0)		
A100	<i>Falco eleonorae</i>	Y	90-145 (0)		
A095	<i>Falco naumanni</i>	Y			P
A709	<i>Falco peregrinus brookei</i>	Y ^a	40-60 (0)		
A099	<i>Falco subbuteo</i>	N	5-70 (+)		P
A096	<i>Falco tinnunculus</i>	N	3000-5000 (0)		
A097	<i>Falco vespertinus</i>	Y			P
A716	<i>Francolinus francolinus francolinus</i>	N	3000-7000 (0)		
A657	<i>Fringilla coelebs</i> all others	N	15000-45000 (0)		
A723	<i>Fulica atra atra</i>	N	100-250 (0)	1000-4500 (+)	
A244	<i>Galerida cristata</i>	N	45000-90000 (0)		
A721	<i>Gallinula chloropus chloropus</i> [Europe & North Africa]	N	50-150 (+)		
A342	<i>Garrulus glandarius</i>	N	3000-8000 (+)		
A625-B	<i>Glaireola pratincola pratincola</i> [Black Sea & E Mediterranean/Eastern Sahel zone]	Y ^a			P
A639-A	<i>Grus grus grus</i> [Eastern Europe/Turkey, Middle East & NE Africa]	Y ^a			P
A724	<i>Grus virgo</i>	N			P
A078	<i>Gyps fulvus</i>	Y	2-5 (0)		
A131	<i>Himantopus himantopus</i>	Y	50-200 (0)		P
A740	<i>Hippolais pallida</i>	N	20000-70000 (0)		
A252	<i>Hirundo daurica</i>	N	3000-8000 (0)		
A737	<i>Hirundo rupestris</i>	N	200-800 (0)		
A251	<i>Hirundo rustica</i>	N	75000-175000 (-)		

Code	Species/subspecific population	Annex I	Breeding	Wintering	Passage
A617-B	<i>Ixobrychus minutus minutus</i> [C & E Europe, Black Sea & E Mediterranean/Sub-Saharan Africa]	Y ^a	1-4 (0)		
A433	<i>Lanius nubicus</i>	Y	4000-10000 (0)		
A341	<i>Lanius senator</i>	N	25-50 (0)		
A181	<i>Larus audouinii</i> [Mediterranean/N & W coasts of Africa]	Y	14-28 (-)		
A459	<i>Larus cachinnans</i>	N		600-1100 (-)	
A180	<i>Larus genei</i>	Y			P
A604	<i>Larus michahellis</i>	N	100-200 (0)		
A179	<i>Larus ridibundus</i>	N		1260-2290 (0)	
A369	<i>Loxia curvirostra</i>	N	500-2000 (x)		
A246	<i>Lullula arborea</i>	Y	700-2000 (x)		
A271	<i>Luscinia megarhynchos</i>	N	1000-3000 (0)		
A242	<i>Melanocorypha calandra</i>	Y	1000-3000 (0)		
A069	<i>Mergus serrator</i>	N		0-11 (0)	
A230	<i>Merops apiaster</i>	N	100-200 (x)		P
A746	<i>Miliaria calandra</i>	N	20000-50000 (+)		
A073	<i>Milvus migrans</i>	Y			P
A281	<i>Monticola solitarius</i>	N	200-400 (x)		
A260	<i>Motacilla flava</i>	N	10-50 (0)		
A319	<i>Muscicapa striata</i>	N	1000-3000 (x)		
A058-B	<i>Netta rufina</i> [Black Sea & East Mediterranean]	N	1-3 (+)	2-6 (-)	
A730	<i>Numenius arquata orientalis</i> [Western Siberia/SW Asia, E & S Africa]	N		10-50 (0)	
A610-A	<i>Nycticorax nycticorax nycticorax</i> [C & E Europe/Black Sea & E Mediterranean (bre)]	Y ^a	5-10 (0)		
A467	<i>Oenanthe cyprica</i>	Y	40000-100000 (0)		
A337	<i>Oriolus oriolus</i>	N	10-40 (0)		
A214	<i>Otus scops</i>	N	5000-12000 (x)		
A071-B	<i>Oxyura leucocephala</i> [East Mediterranean, Turkey & South-west Asia]	Y		0-4 (0)	
A470	<i>Parus ater cypriotes</i>	Y	30000-60000 (0)		
A330	<i>Parus major</i>	N	50000-150000 (+)		
A620	<i>Passer domesticus</i>	N	300000-800000 (+)		
A771	<i>Passer hispaniolensis</i> all others	N	150000-400000 (-)		
A072	<i>Pernis apivorus</i>	Y			P
A392	<i>Phalacrocorax aristotelis desmarestii</i>	Y	20-60 (x)		
A663-B	<i>Phoenicopiterus roseus</i> [East Mediterranean]	N		3000-20000 (0)	
A343	<i>Pica pica</i>	N	10000-40000 (0)		
A700	<i>Plegadis falcinellus falcinellus</i> [Black Sea & Mediterranean/West Africa]	Y ^a			P
A140	<i>Pluvialis apricaria</i>	Y		200-750 (+)	
A141	<i>Pluvialis squatarola</i> [W Siberia & Canada/W Europe & W Africa]	N		20-80 (0)	
A361	<i>Serinus serinus</i>	N	2500-10000 (+)		
A631-B	<i>Sterna albifrons albifrons</i> [Black Sea & East Mediterranean (bre)]	Y ^a	1-19 (+)		
A193	<i>Sterna hirundo</i>	Y	1-3 (0)		
A731-B	<i>Sterna nilotica nilotica</i> [Black Sea & East Mediterranean/Eastern Africa]	Y ^a			P
A209	<i>Streptopelia decaocto</i>	N	8000-15000 (0)		
A210	<i>Streptopelia turtur</i>	N	3000-10000 (0)		

Code	Species/subspecific population	Annex I	Breeding	Wintering	Passage
A303	<i>Sylvia conspicillata</i>	N	7000-15000 (0)		
A305	<i>Sylvia melanocephala</i>	N	60000-110000 (+)		
A468	<i>Sylvia melanothorax</i>	Y	70000-140000 (-)		
A690	<i>Tachybaptus ruficollis ruficollis</i> [Europe & North-west Africa]	N	50-150 (0)	160-750 (0)	
A228	<i>Tachymarptis melba</i>	N	200-500 (x)		
A397-B	<i>Tadorna ferruginea</i> [East Mediterranean & Black Sea/North-east Africa]	Y		0-40 (-)	
A048	<i>Tadorna tadorna</i>	N		600-2200 (+)	P
A676	<i>Troglodytes troglodytes</i> all others	N	2000-7000 (x)		
A283	<i>Turdus merula</i>	N	200-400 (+)		
A213	<i>Tyto alba</i>	N	250-750 (x)		
A232	<i>Upupa epops</i>	N	400-1200 (0)		
A728	<i>Vanellus spinosus</i> [Black Sea & Mediterranean (bre)]	Y ^b	40-60 (+)	100-280 (+)	
A142	<i>Vanellus vanellus</i> [Europe, W Asia/Europe, N Africa & SW Asia]	N		160-1400 (+)	

Note: The abbreviation Y^a is used for taxa (typically subspecies) listed in the Annex I at higher taxonomical level. The code Y^b indicates that the Annex I contains a synonym of the name used in the checklist.