

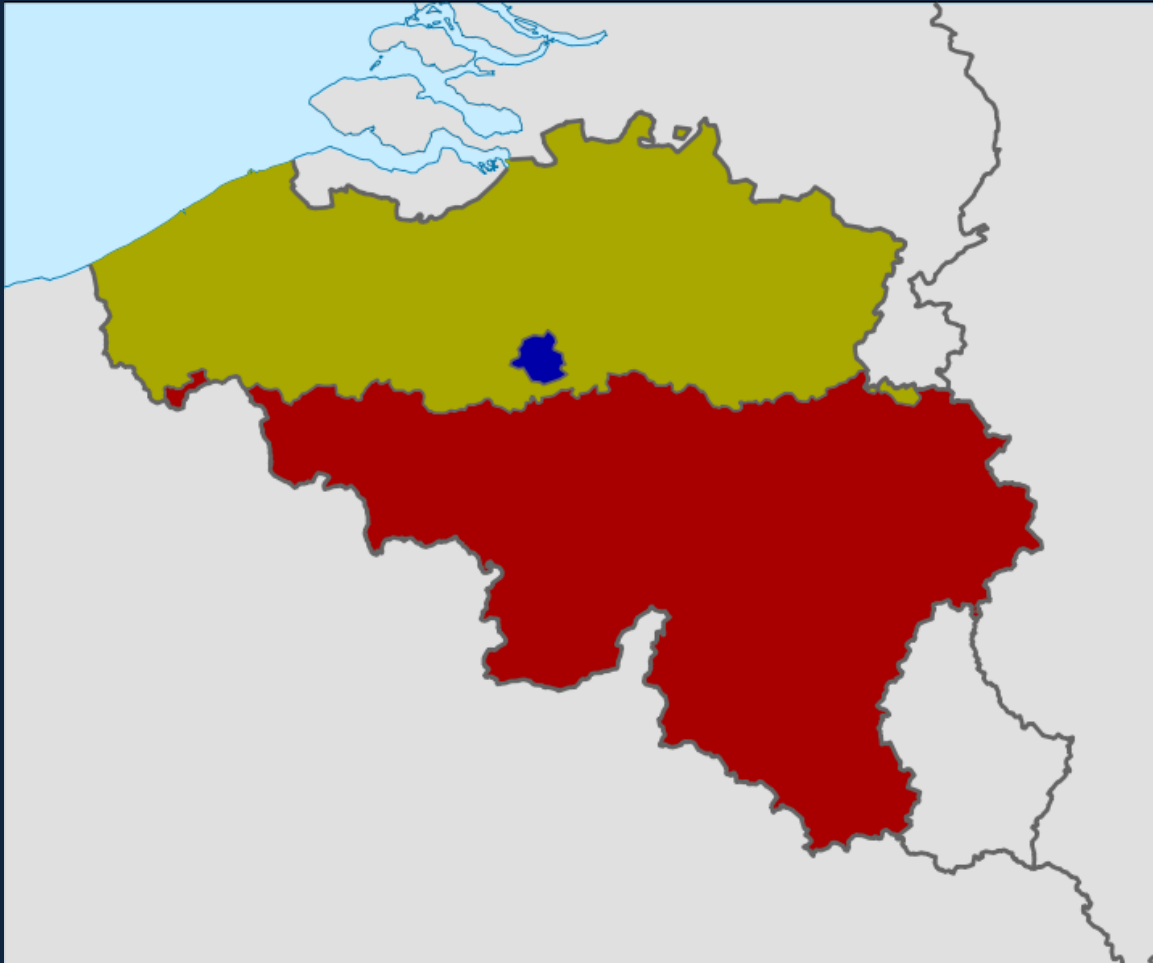
# ERDF : A TOOL FOR THE ECONOMIC DEVELOPMENT IN BRUSSELS-CAPITAL REGION



**Union Européenne**  
Fonds Européen de Développement Régional

**Europese Unie**  
Europees Fonds voor Regionale Ontwikkeling

# Brussels-Capital Region is...



- One of the 3 Belgian Regions
- 1,16 M inh. (on 11,1 M in BE)
- 20% of jobs in BE (but 60% for external commuters)
- 3<sup>rd</sup> highest GDP (p. cap.) in EU
- An unemployment rate of 20,8 %

# Structural funds in Brussels

4 ESF  
Programmes

1 ERDF  
Programme

4 European  
Territorial  
Cooperation  
Programmes



# CONTEXT : EU 2020 FOR A...



Smart growth



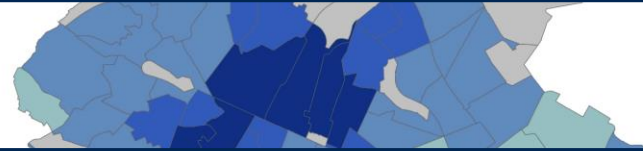
Sustainable growth



Inclusive growth

# ...applied to a region concerned by

1: **An economic challenge** : improved status for RID and strengthening the SMEs competitiveness enterprises



2: **An environmental and energy challenge** (energy performance of buildings, sustainable energy, sustainability of economic activities)



3: **A social, economic and environmental split challenge** inside the territory



# Writing of an Operational ERDF Programme coherent with

EU

- EU 2020 Context and ERDF Regulation
- Global Approach of Commission

Regional  
Context

- Economic development opportunities
- Economic and social needs

Political  
context

- Opportunity of the new regulation tools
- Risk to loose the effects of the current approach

# OPERATIONAL PROGRAMME (STRATEGY)

Improvement of “Urban  
Metabolism” of the Region

Priority Axis 1 : Support of the RID, the creation and development of SMEs of the OP “filieres”

50%

Priority Axis 2: Support of a circular economy and rational use of ressources in the OP “filieres”

35%

Priority Axis 3 : Reduction of the social, economic and environmental split in the Region

15%



T.O. 1 Strengthening research, technological development and innovation;

20%



T.O. 3 enhancing the competitiveness of small and medium-sized enterprises

30%



T.O. 4 Supporting the shift towards a low-carbon economy in all sectors

31%



T.O. 6 Protecting the environment and promoting resource efficiency

4%



T.O. 9 Promoting social inclusion and combating poverty;

15%

A  
X  
I  
S  
1

A  
X  
I  
S  
2

A  
X  
I  
S  
3



# THE “FILIÈRES” APPROACH

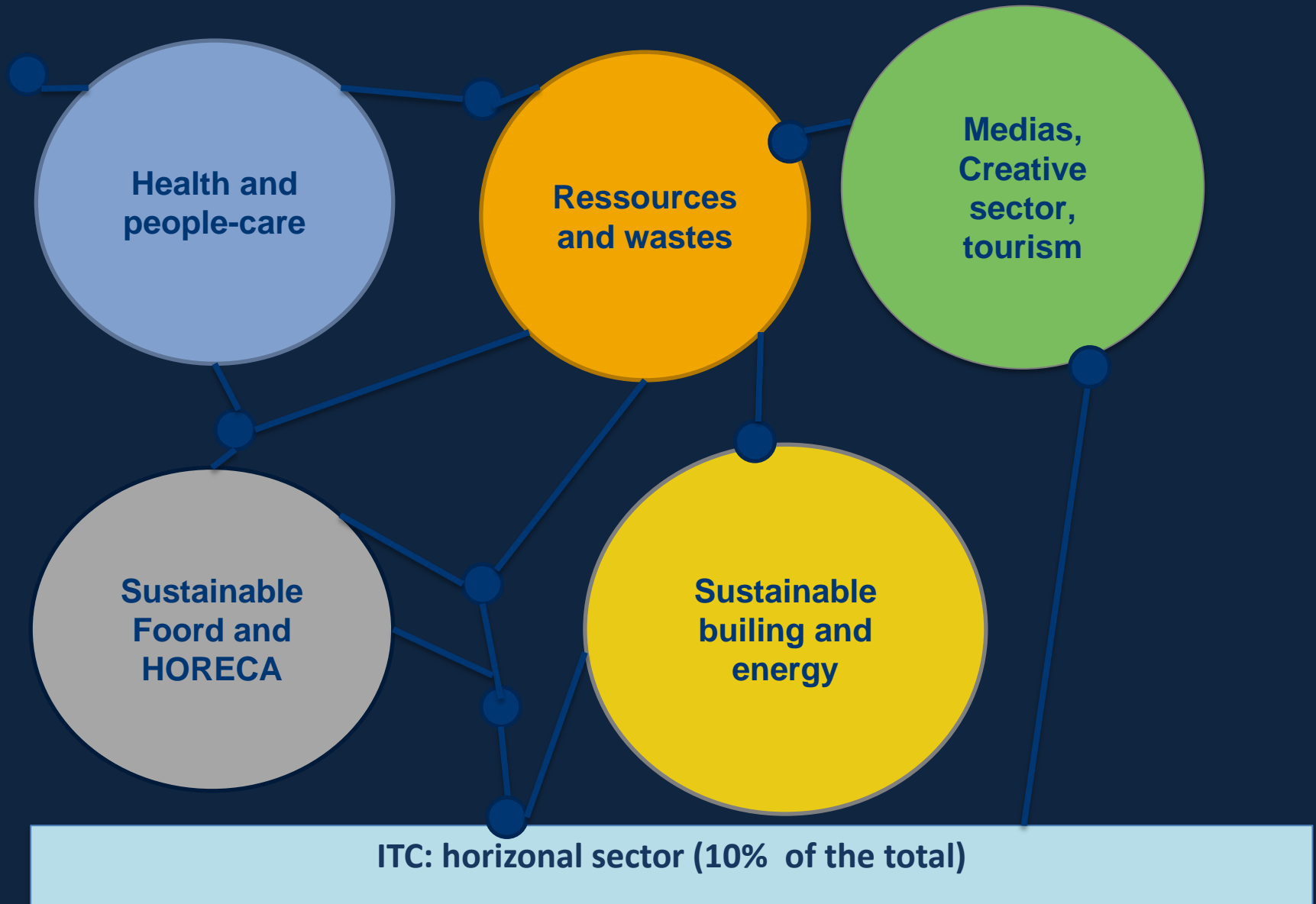
Gathering, in a common strategy, of...

Similar or complementary activities combined to support the development of a sector...

Private or public actors (enterprises, research or training centres, universities, public operators) mobilized through an integrated/systemic approach...

Which can conduce to a reinforcement of “urban metabolism” of the Region

# THE "FILIÈRES" : IDENTIFIED SECTORS



# CHOICE OF THE “FILIÈRES” : ELEMENTS OF INTEREST

## Potential

- Creation of economic activities (with a leverage effect)
- Creation of jobs for the inhabitants

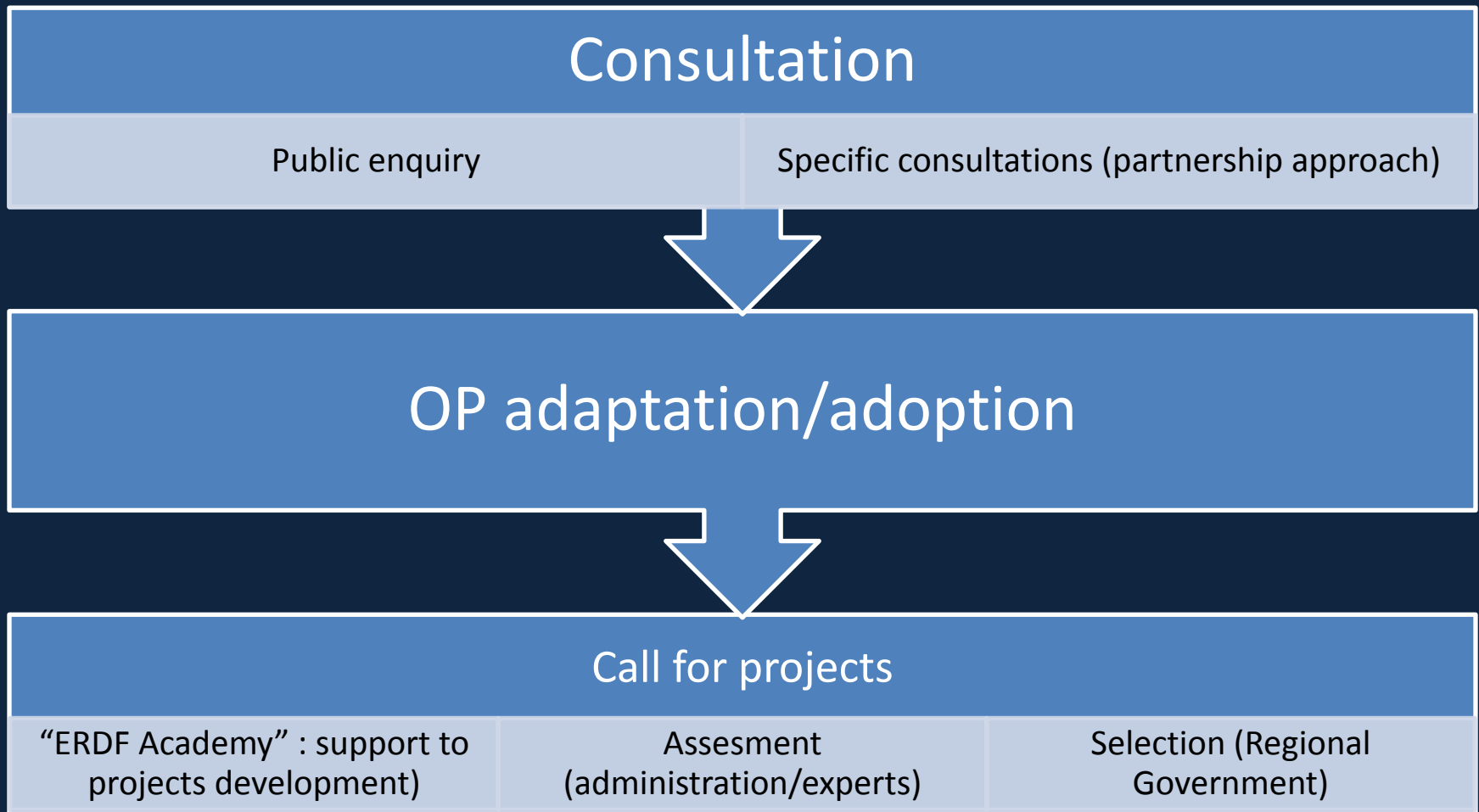
## Urban met.

- Capacity to answer to the “Urban metabolism” objective

## Coherence with other policies

- Regional “Environnement-Employement Alliance”
- Regional Plan for Innovation...

# OPERATIONAL PROGRAMME : NEXT STEPS



# “INTERREG IVB NWE”?

## “IV”?

- 4<sup>th</sup> experience
- Before the 5<sup>th</sup> (2014-2020), not yet approved

## “B”?

- Not the A (cross-border cooperation)
- Not the C (all Europe’s cooperation)

## “NWE”?

- North West Europe



# A Programme to...



Promote innovative approach of problems/issues



Work within a transnational partnership (promoting better/transnational solutions)



Producing tangible and transnational results (concrete results, with a leverage effect)

Monitored by 7 Member States

```
graph TD; A[Monitored by 7 Member States] --> B[Managed by the Nord-Pas-de-Calais Region (FR) with the support of an international Joint Technical Secretariat]; B --> C[Locally/Regionally/National supported by a team of National Contact Points];
```

Managed by the Nord-Pas-de-Calais Region (FR) with the support of an international Joint Technical Secretariat

Locally/Regionally/National supported by a team of National Contact Points



# 2007-2013 Priorities

**Capitalising on  
innovation**

**Managing  
resources and risks**

**Improving  
connectivity**

**Strengthening  
communities**

# 2014-2020 NWE Programme



[www.nweurope.eu](http://www.nweurope.eu)

Thank you for your attention