

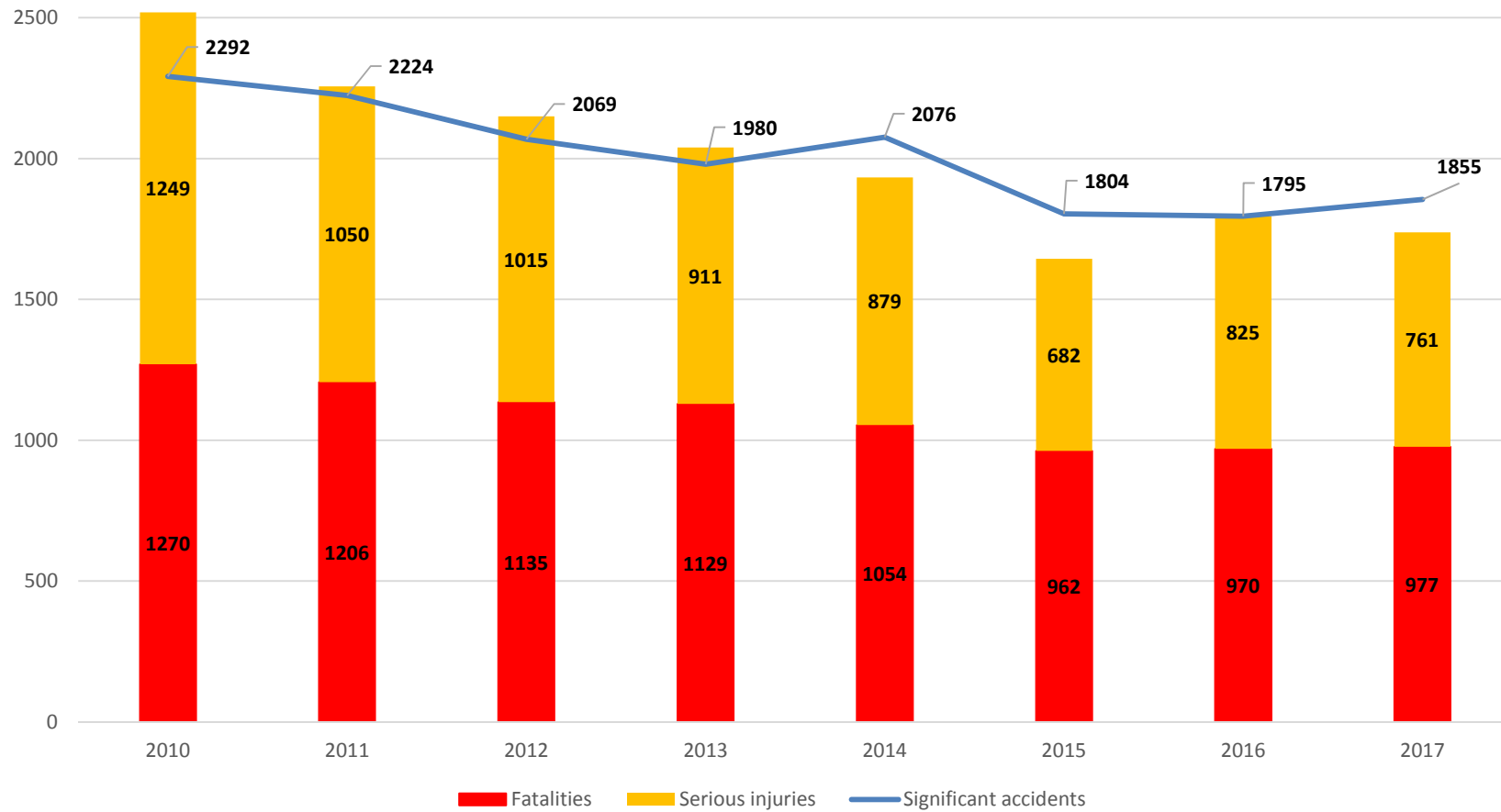
Rail Safety in the EU-28 2017

Analysis and Monitoring Unit

- Data collection for Common Safety Indicators 2017 completed successfully (25th October – 25 days late unfortunately due to re-organisations in three MS). Data collected through publicly accessible database – ERAIL see <http://erail.era.europa.eu/>
- ERAIL contains statistics on significant accidents, fatalities and serious injuries broken down by type of accident. In addition, some precursor events and information relating to level crossings and control systems plus normalising indicators are also given. A separate part of the system also deals with investigation details relating to the most serious accidents.
- Initial validation of CSI data completed.
- Secondary validation and “clean-up” of data within CSIs is ongoing.

What the CSI 2017 results look like

EU-28 Significant accidents, Fatalities and Serious injuries 2010 - 2017

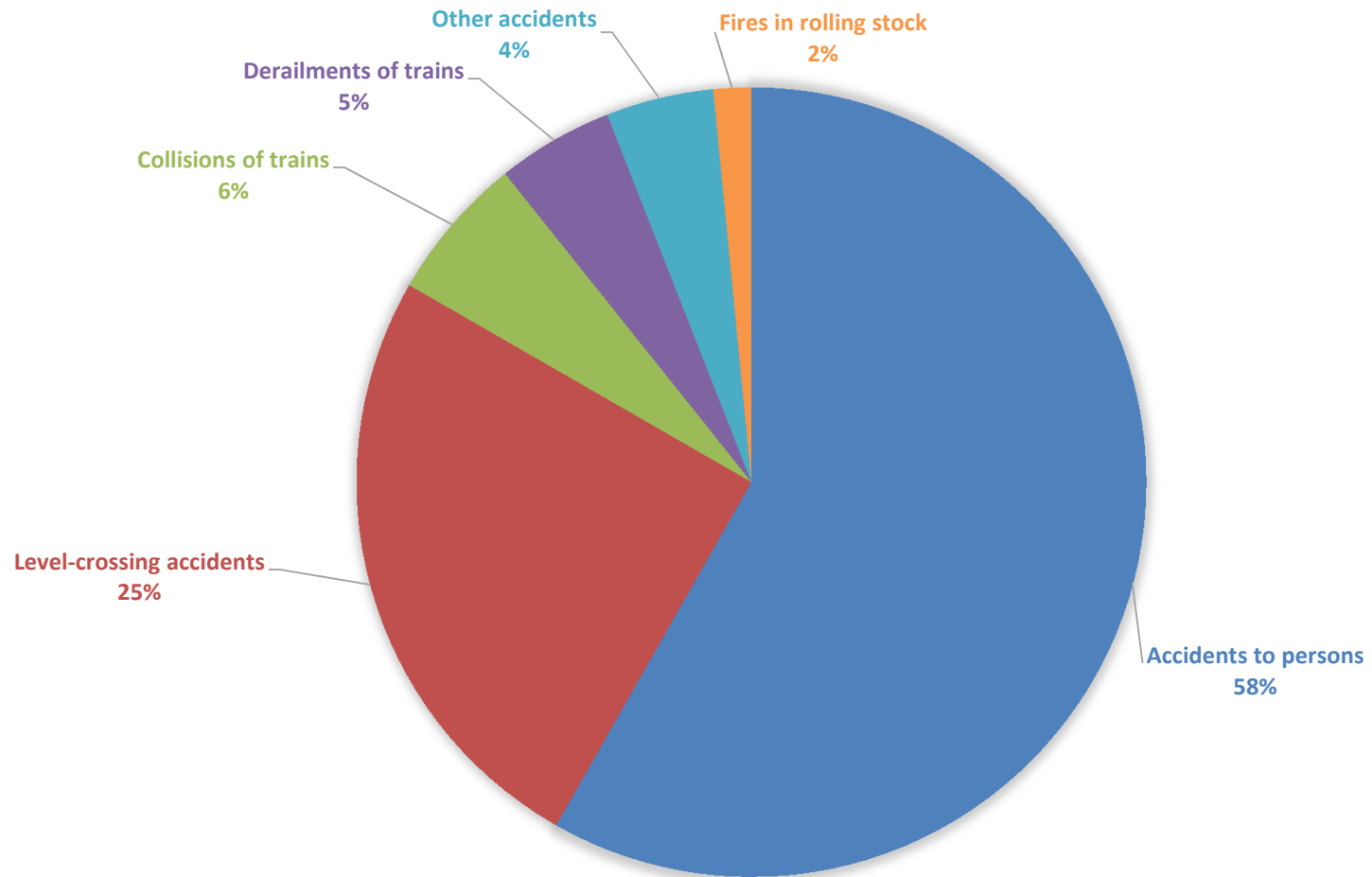


- The results suggests a slight deterioration of railway safety in 2017 compared to 2016.
- The 2017 results show that compared to 2016:
 - significant accidents (+60, +3,3%);
 - fatalities (+7, +0,7%), and
 - serious injuries (-64, -7,8%).

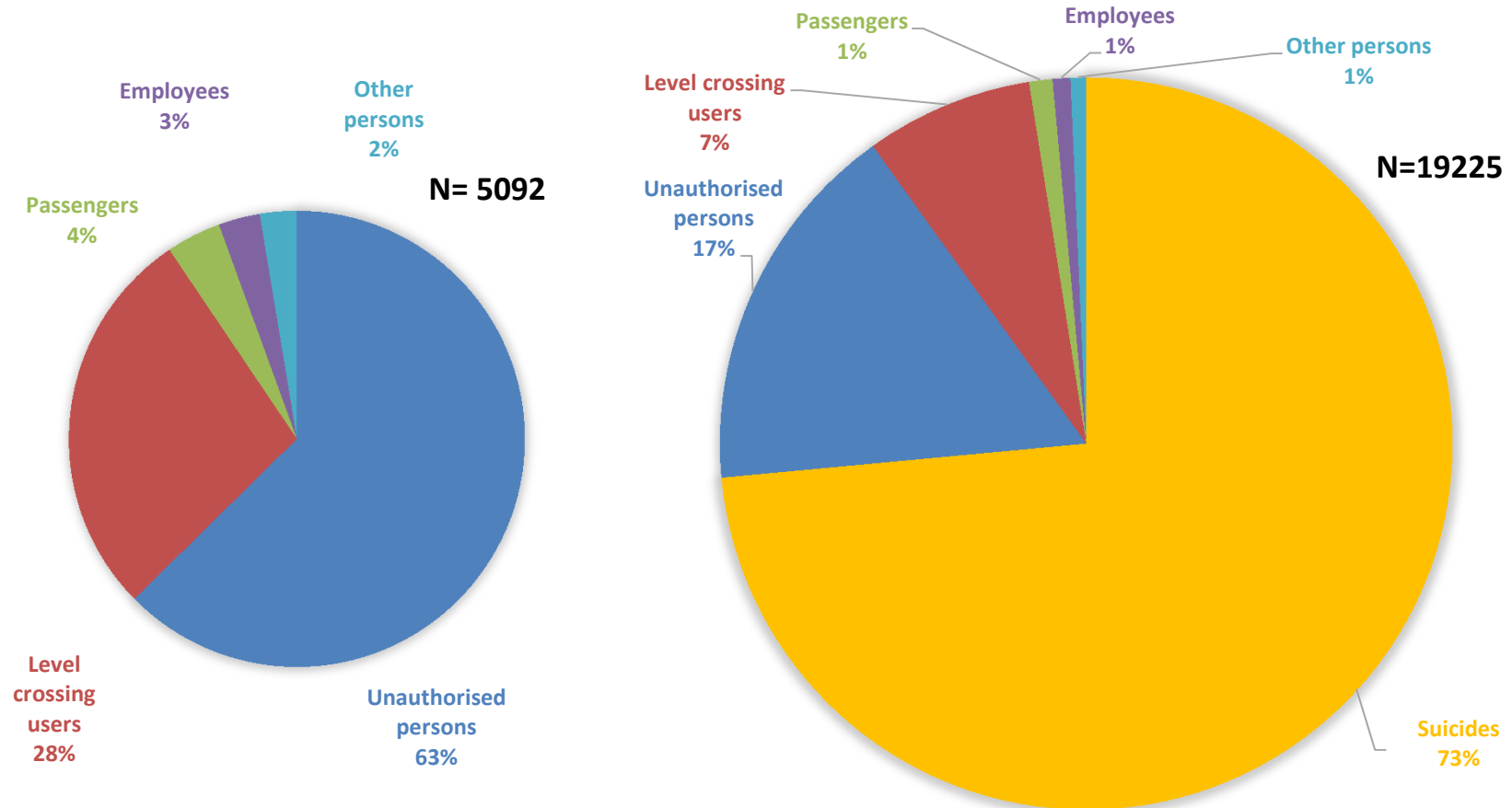
Significant accidents and fatalities increased (therefore a deterioration) compared to 2016. Serious injuries fell indicating an improvement.

- However, analysis of the changes show that the differences are not statistically significant compared to the 5 year means (2013 – 2017) when broken down by type of accident. At Member State level only three MS show statistically significant changes – PL, RO and SK – fortunately all positive – that is a reduction of significant accidents

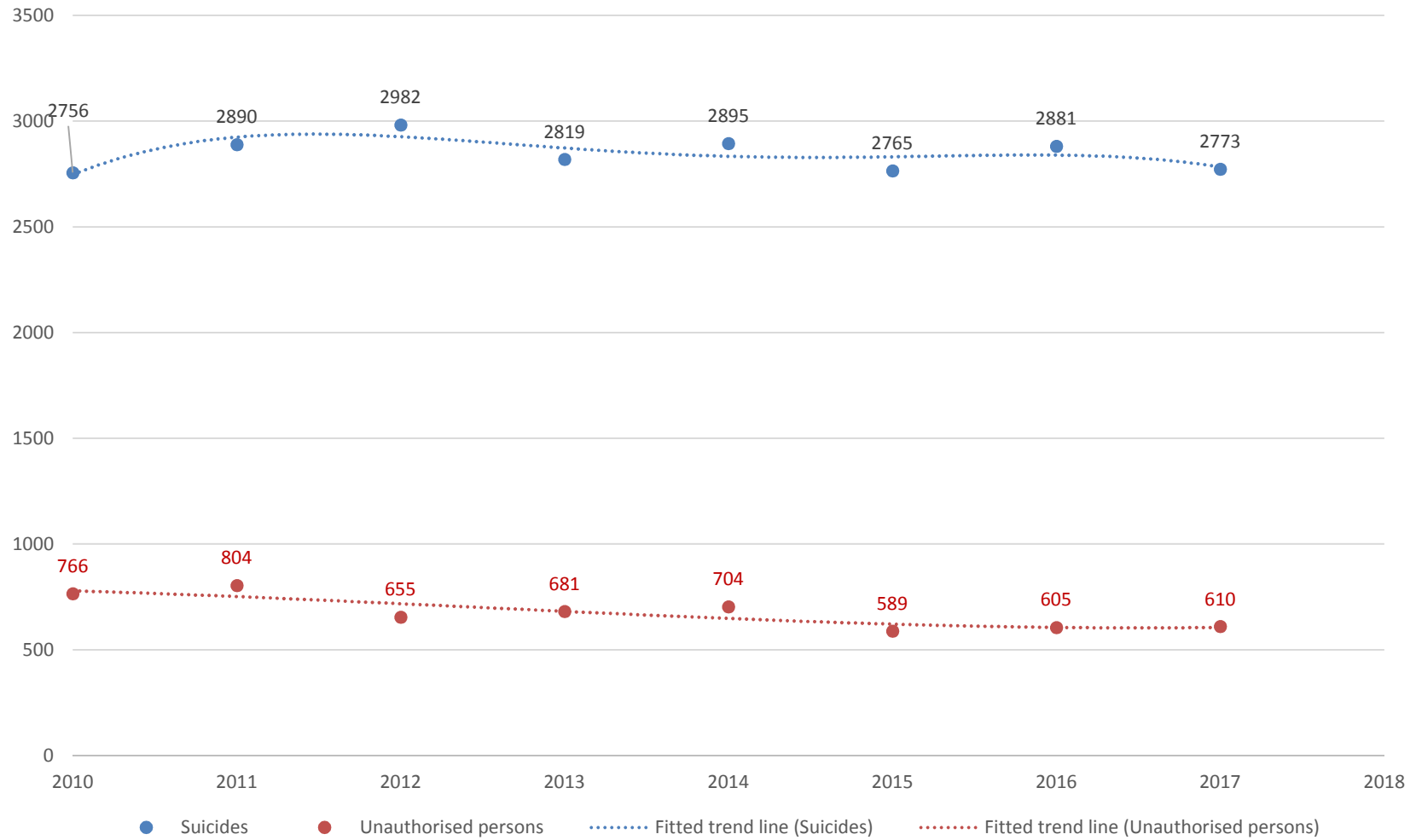
Types of accidents 2013 – 2017 (n = 9510)



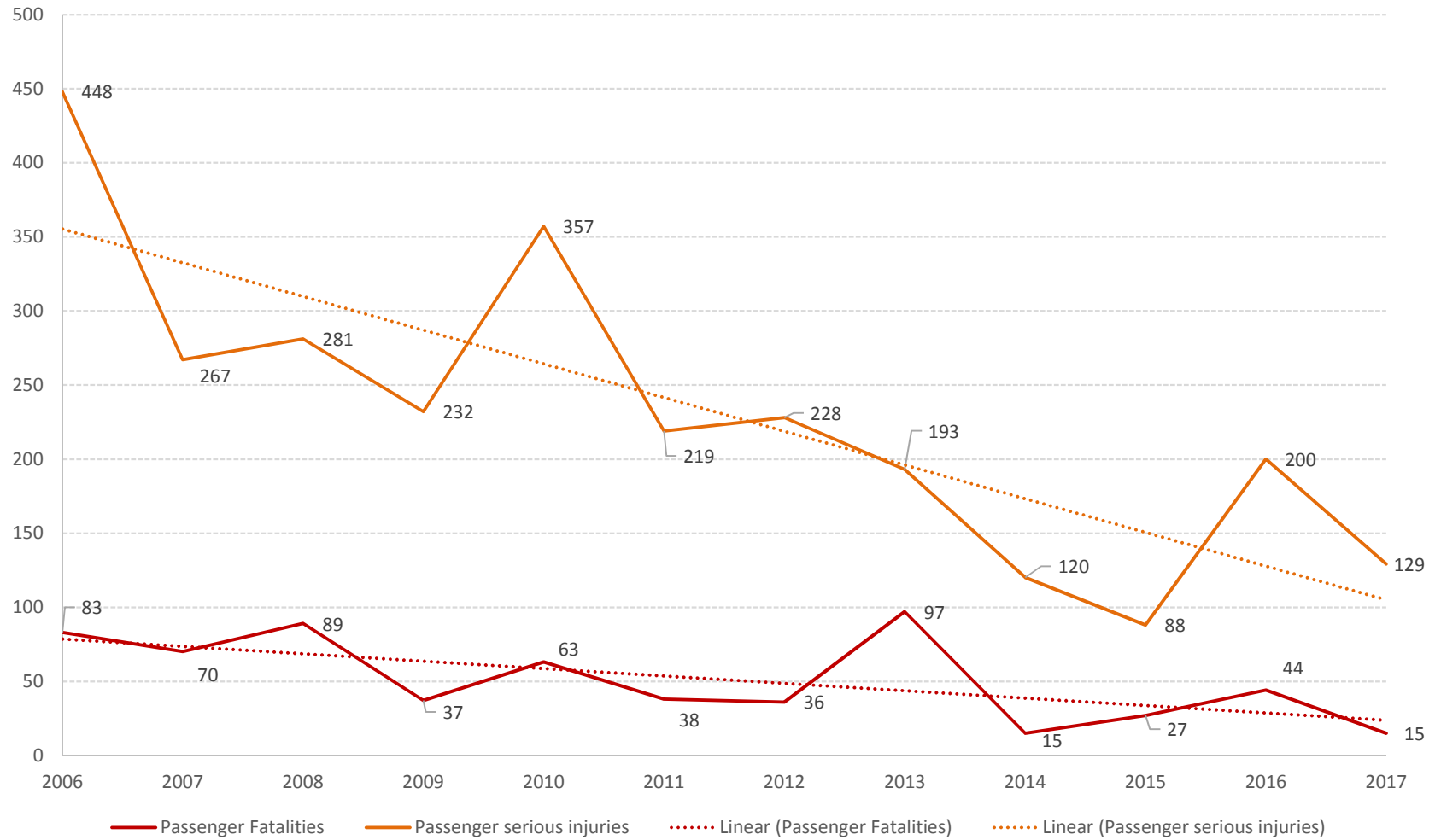
Fatalities 2013 – 2017 excluding and including suicides



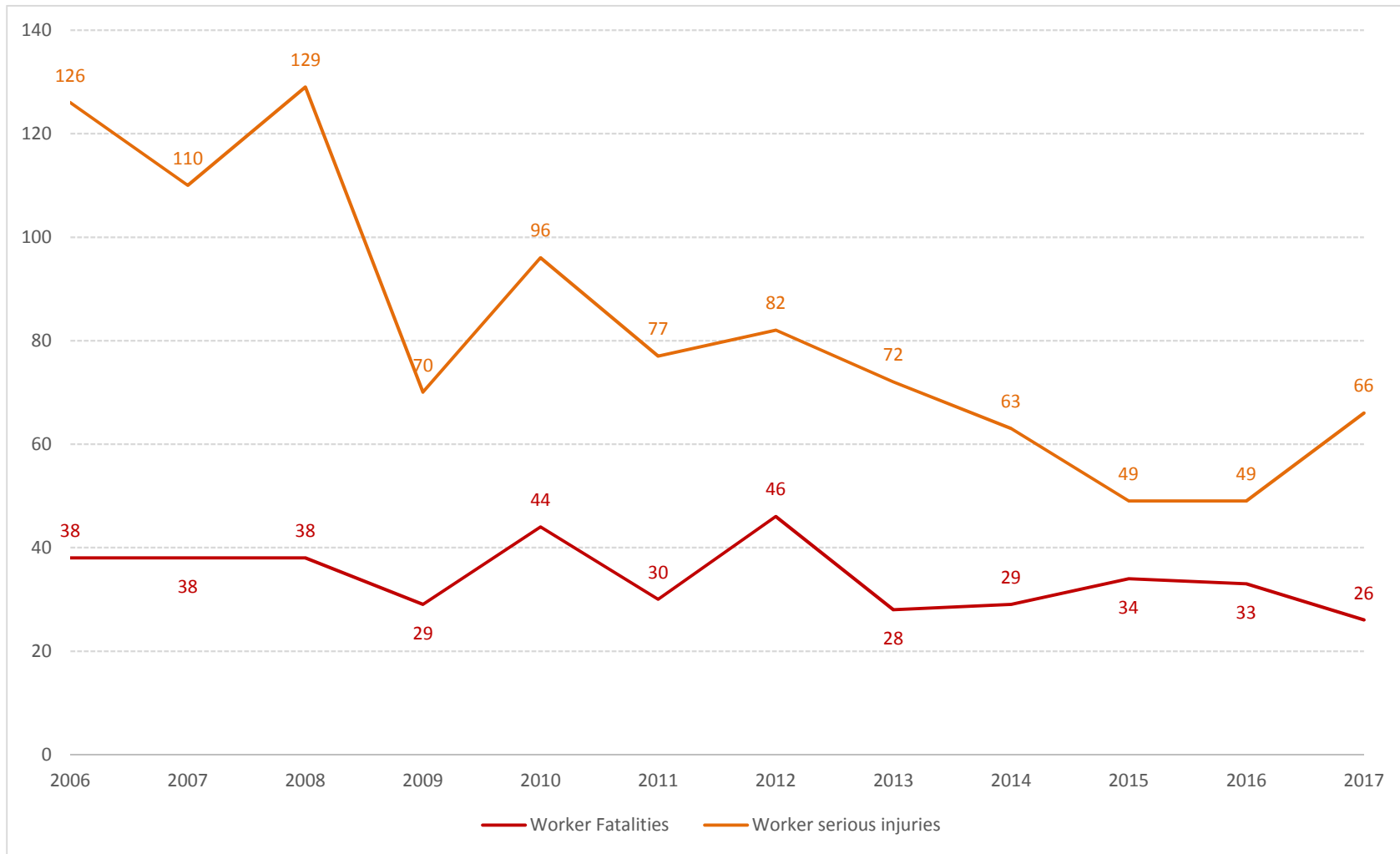
Suicides and Unauthorised users



Passenger fatalities and serious injuries



Accidents to railway staff and contractors



- We are currently working through the CSIs for both internal and external users. We will publish various information through various means.
- Our users of CSI data include:
 - European Commission
 - Eurostat
 - Member States
 - NSAs
 - NIBs
 - Railway sector
 - Other public bodies
 - Public

Railway safety concerns in 2018



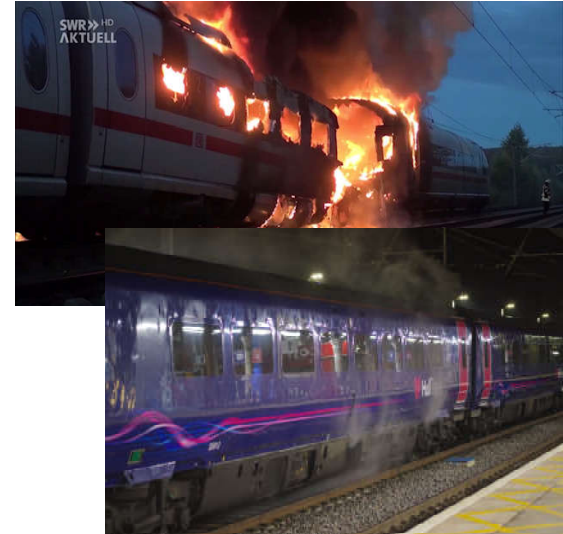
Broken rail



Level crossings



Collision of trains



Train fires



SPAD



Making the railway system work better for society.

Follow us on  [ERA_railways](#)

Discover our job opportunities on era.europa.eu

