

# EEA data/map viewer on UWWTD

Beate Werner, EEA  
Anita Künitzer, ETC ICM  
Prepared by ETC/ICM



# UWWTD reporting - fit for purpose

- SIIF – from pilot to institutional and technical consistent framework
- UWWTD reporting in a political and technical context of the WFD

→ clear business processes for reporting – ensuring high quality and policy relevant assessments

# UWWTD data products

- [UWWTD Waterbase-reported data \(art.15 data\)](#)
- [UWWTD Waterbase– derived data](#)
- (compliance assessment results, URL links to individual web sites, links to the UWWT fiche in data viewer) assessment
  - [UWWTD Map viewer](#)
  - [UWWTD Data viewer](#)
- Reference layer of the catchments of sensitive areas

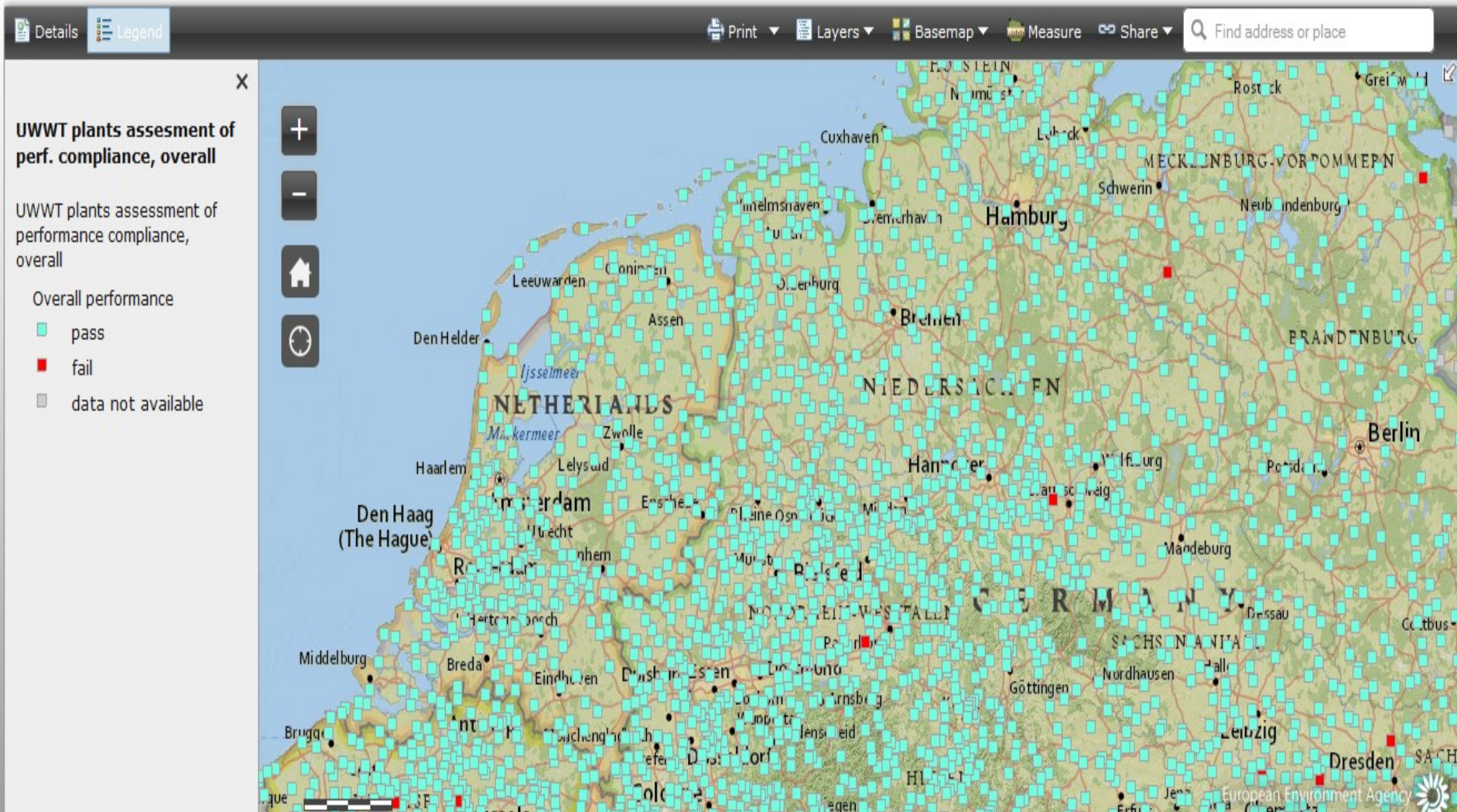


# UWWTD map viewer

- What's new:
  - New layer on UWWT plants performance compliance (based on MS self-assessment)
  - New layer on additional polishing treatment (e.g. Disinfection, filtration, etc.)
  - Links to the National websites on UWWTD implementation
  - Pop up windows more user friendly
  - Link to detailed data sheets (UWWT fiche-report- in data viewer) derived from the Waterbase
  - [URL to the map viewer](#)

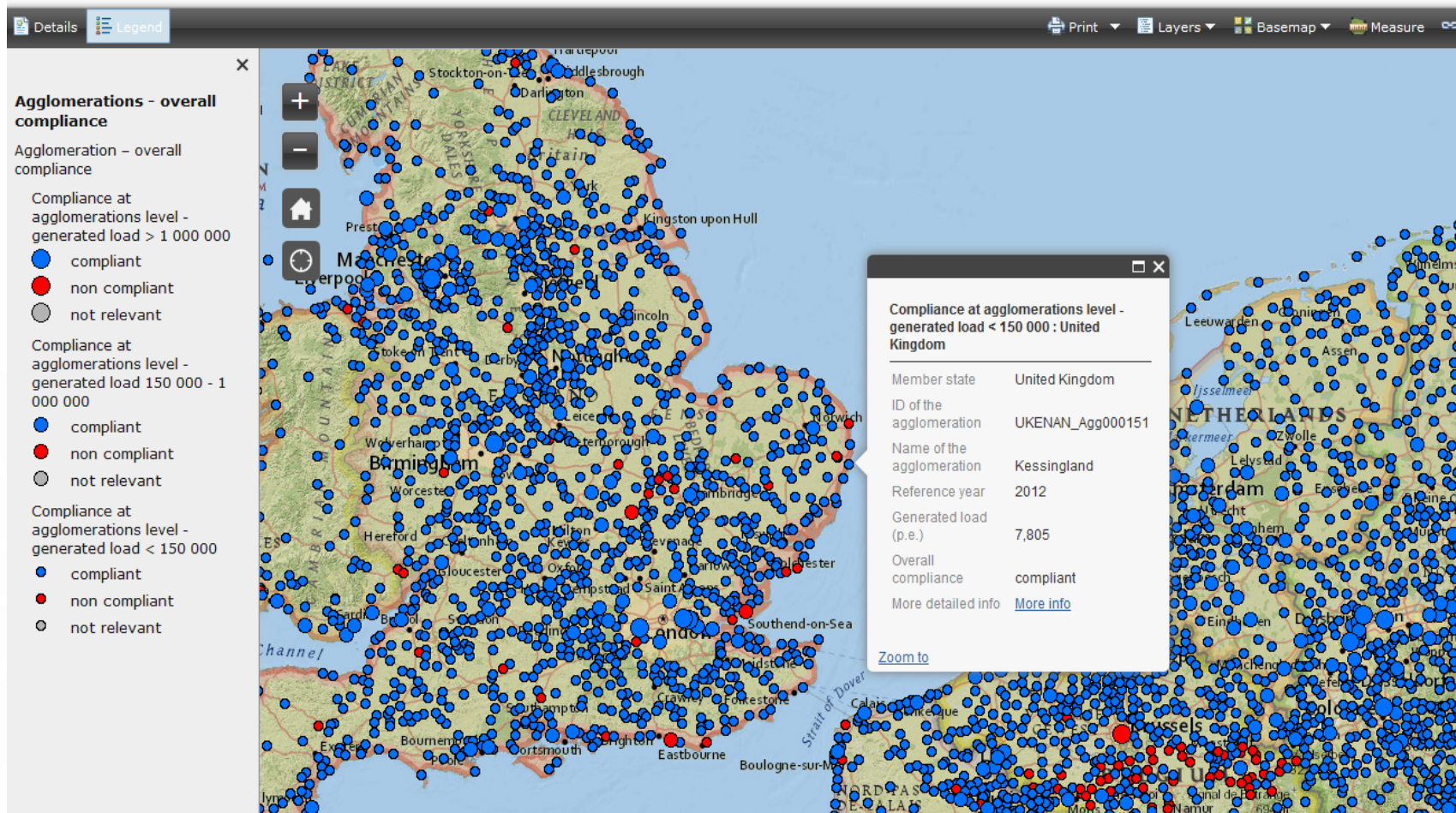
# NEW: UWWT plants performance compliance

UWWT maps - 20150225





# UWWTD map viewer- agglomerations-overal compliance (NEW: user frindly pop-up windows)



# New: UWWTD treatment plants –by treatment type (example of the link to the UWWT fiche)

DETP\_NW2426

Eslohe-Bremke

Germany

## Description of the UWWTP [Direct access on the map](#)

Region	DEA57 (Hochsauerlandkreis)
Latitude	8.19584
Longitude	51.2577
Design capacity	14500
Treatment in place	Other
Date of closing	

## Key figures of the UWWTP

Entering load	10095
Volume of waste water treated (m3/d)	2031776
Incoming BOD [kg/d]	
Discharged BOD [kg/d]	
%BOD removal	
Incoming COD [kg/d]	
Discharged COD [kg/d]	
%COD removal	
Incoming N [kg/d]	40.531
Discharged N [kg/d]	10.659
%N removal	0.2629839
Incoming P [kg/d]	6.448
Discharged P [kg/d]	1.066
%P removal	0.1653226

## Description of the discharge point [Direct access on the map](#)

Name of the discharge point	Eslohe-Bremke
ID of the discharge point	DEDP_NW2426
Name of the RCA	Deutschland
ID of the waterbody	DE_RW_DENW27616_13_31
Name of the waterbody	N/A
ID of the RBD	2000
Name of the RBD	2000
Does the discharge affect other directives	

## Compliance of the UWWTP

Performance compliance BOD	pass
Performance compliance COD	pass
Performance compliance TSS	
Performance compliance N	pass
Performance compliance P	pass

## Description and Key figures of the Agglomerations served by the UWWTP

Name of the agglomeration	ID of the agglomeration	Type of collection system	Generated load	Rate of load collected	Rate of load addressed to IAS	Rate not addressed to IAS and not collected	Rate of load collected and entering treatment plants	Raw sewage discharged (collection system) (m3/d)	Raw sewage discharged (collection system) (p.e.)
Unteres Liesertal GKA (Lieser)	DEAG_RP105130788		21226	99	1	0			



# Role of current map view in a SIIF approach

- Still based on normal reporting via CDR – no other viable business processes so far.  
→ avoid any inconsistency between different tools
- 8<sup>th</sup> exercise – data quality problems, better QA/QC is needed before any (dissemination) map viewer  
→ QA/QC and processes set up for WFD now are suitable for UWWTD
- Links to MS web-sites included manually, no updated mechanism agreed yet → processes needed
- No ISPIRE reporting services realised yet  
→ needs institutional framing at EEA – AND TIME!





**THANK YOU**



# UWWTD data viewer

Contents **View** Edit Aliases  
 Translate into... Actions Add new... State: **Under review (login required)**  
 Navigation

## Urban Waste Water Treatment Directive data viewer

ar bg bs cs da de el **en** es et fi ga hr hu is it lt lv mk mt nl no pl pt ro ru sk sl sq sr sv tr zh

by Alexandru Ghica - last modified Sep 19, 2013 09:18 AM - History

Topics: **Water**

The UWWTD dataviewer enables an easy access and analysis of the data reported under the article 15 of the UWWTD. The information is presented in interactive tables, maps and charts, and can be downloaded or printed based on your selections.

### Waste Water Infrastructure - tables and charts

Here you will find pre-defined queries that will allow you to filter the data according to several criteria, e.g. size of agglomeration, type of receiving area, Member State(s), etc. Information is presented in tables or charts. For large tables it is recommended to use the export function.



Agglomerations



Urban waste water treatment plants



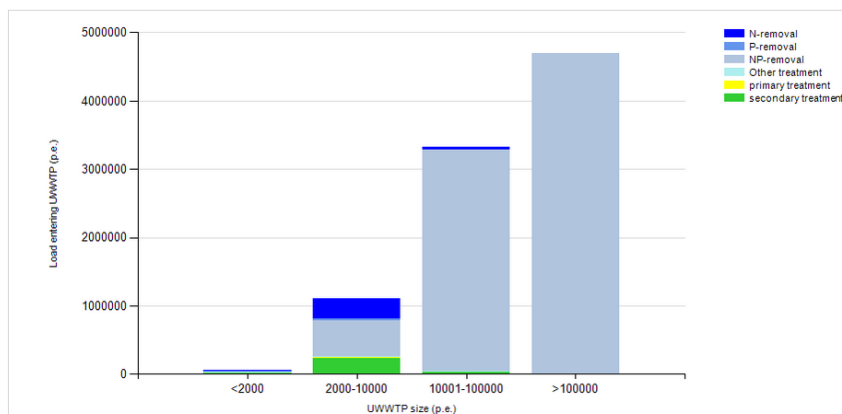
Receiving areas

Member State	Reported Period	ID UWWTP	Name UWWTP	State UWWTP	UWWTP/collecting system without treatment	Organic design capacity (p.e.)	Type of treatment	Monitoring results BOD	Monitoring results COD	Monitoring results TSS	Monitoring results Ntot	Monitoring results Ptot	ID of receiving area	Type of receiving area
Estonia	2009	EE63211	Kahta-Järve	active	Collecting system is connected to UWWTP	191400	NPRemoval	pass	pass	pass	pass	pass	EE10	Art. 5(B) area (entire Member State)
Estonia	2009	EE061415	Tallin	active	Collecting system is connected to UWWTP	500000	NPRemoval	pass	pass	pass	fail	pass	EE10	Art. 5(B) area (entire Member State)
Estonia	2009	EE079514	Tartu	active	Collecting system is connected to UWWTP	167000	NPRemoval	pass	pass	pass	fail	pass	EE10	Art. 5(B) area (entire Member State)
Estonia	2009	EEHAq021	Loksa	active	Collecting system is connected to UWWTP	3850	NPRemoval	pass	pass	pass	not relevant	not relevant	EE10	Art. 5(B) area (entire Member State)
Estonia	2009	EEHAq022	Paide	active	Collecting system is connected to UWWTP	6000	Secondary treatment	pass	pass	pass	not relevant	not relevant	EE10	Art. 5(B) area (entire Member State)
Estonia	2009	EEHAq048	Kose	active	Collecting system is connected to UWWTP	3000	PRemoval	pass	pass	pass	not relevant	not relevant	EE10	Art. 5(B) area (entire Member State)
Estonia	2009	EEHAq053	Juri	active	Collecting system is connected to UWWTP	4200	PRemoval	pass	pass	pass	not relevant	not relevant	EE10	Art. 5(B) area (entire Member State)

Country: Czech Year: 2010  
 NUTS: NONE  
 1 of 1

### UWWTD Data Viewer


Size distribution of UWWTPs in terms of load treated and type of treatment in CZ2010



# Reference layer

- Update of the reference layer based on 2013 data
- The following MS submitted updated spatial data:
  - BG, CY, ES, FR, HR, IE, IT, SI, UK
- ETC ICM carried out the quality assurance of the shape files and attributes and checked the consistency with the tabular data on receiving areas.
- After the topology check ETC ICM performed a cleaning of the compiled layer of the catchments. The final (cleaned) version was sent to the reporters and approved.

EEA/NSV/10/002 – ETC/ICM

European Topic Centre  
Inland, coastal, marine waters 

## GIS Reference Layers on UWWTD Directive Sensitive Areas

Description of dataset and processing

Version: 7.0  
Date: 26/02/2015  
EEA activity: 1.5.1.b  
ETC/ICM task, milestone:1

Prepared by / compiled by: Renata Filippi, Petra Ronen, Jiří Kvapil, Lenka Hladíková (ETC ICM)  
Organisation: CENIA

EEA project manager: Fernanda Nery

### Version history

Version	Date	Author	Status and description	Distribution
1.0	08/11/2012	PRO	Final version for EEA	Circa
2.0	14/03/2013	PRO	Final version after MS comments	Forum
3.0	05/04/2013	PRO	Final version after MS comments and confirmation regarding spatial data publication	BNJ, EEA
4.0	10/04/2013	PRO	Final version	Forum
5.0	21/08/2013	PRO	Minor text revision	BNJ, EEA
6.0	30/09/2014	REFI, LH, PRO	Draft for the EEA	Forum, BNJ
7.0	26_02_2015	PRO	Draft for the EEA	Forum, FNE, BNJ



# Reference layer of the UWWTD sensitive areas



# UWWTD QAQC process

- QAQC process for the xml file exported from the web tool

