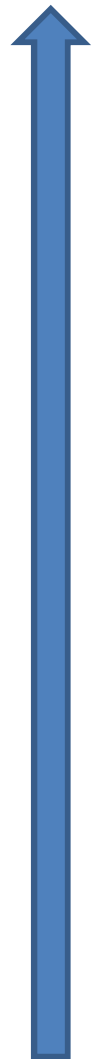


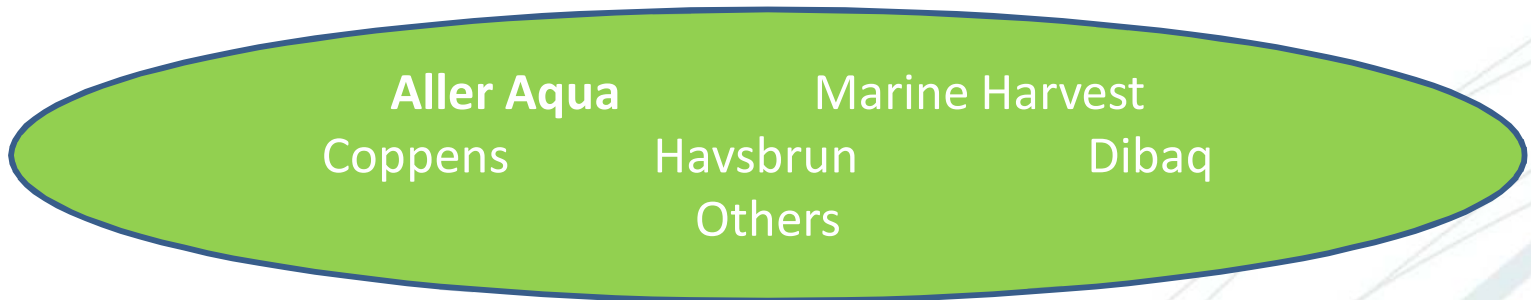
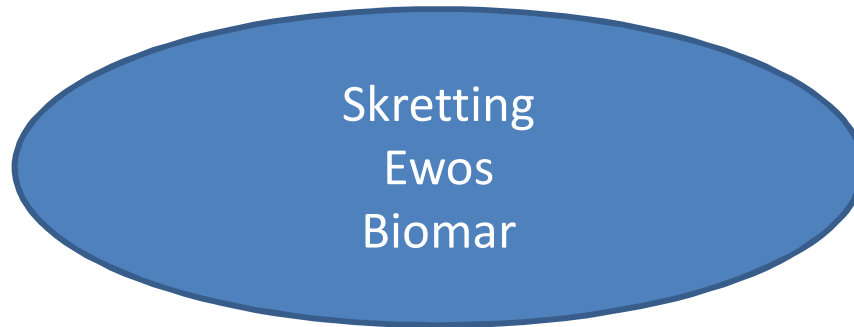


Aller Aqua A/S

Ole Schmidt, Market manager Denmark



Prod.
capacity



Value chain

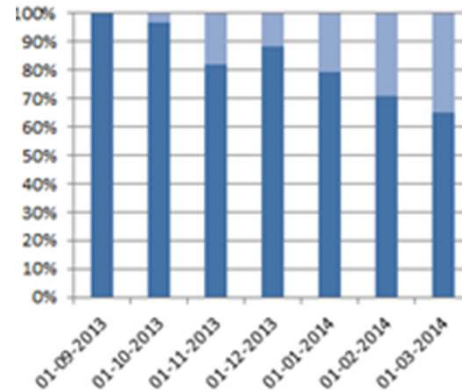


Sustainable Sourcing:

Retail policies

Private standards
ASC, Global Gap, GAA.....

Responsible fishmeal/oil
RTRS soy etc.



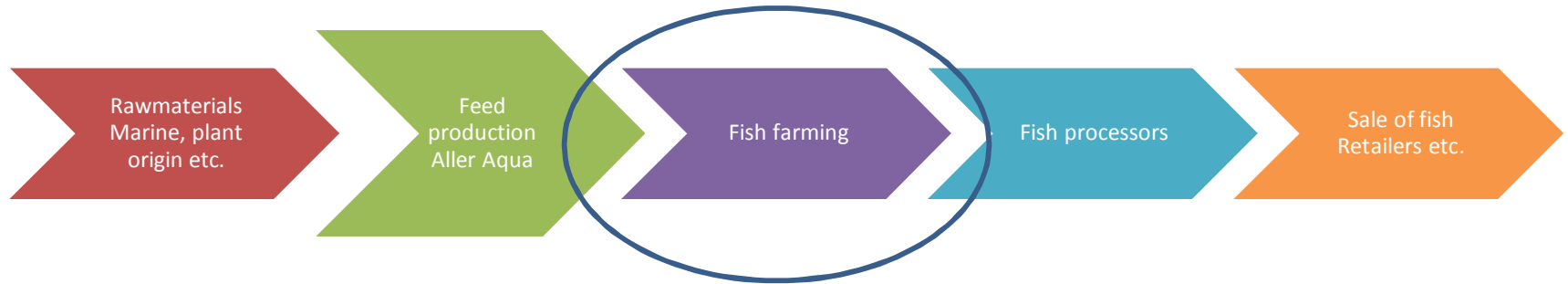
Soy inclusion and substitution.

Enhancement of the product quality of rainbow trout (*Oncorhynchus mykiss*) by inclusion of algae (*Fucus vesiculosus*) in their feed



Written by:
Cecilie Hasselbalch Volke Hougaard

Value chain



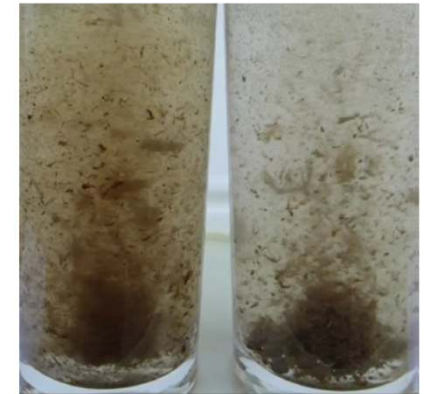
Environmental
Issues:

FCR – Feed
conversion rate
Nitrogen,
Phosphorus, COD

Faeces stability

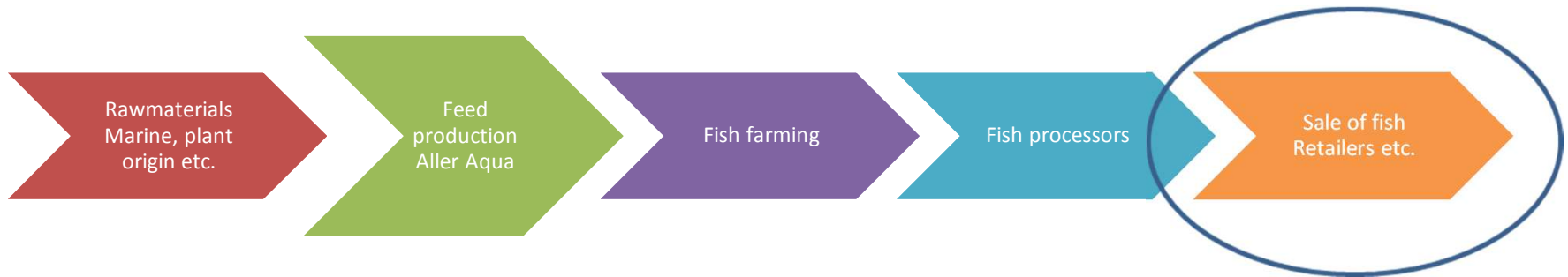
Pellet – physical
properties

Phosphor uptake?





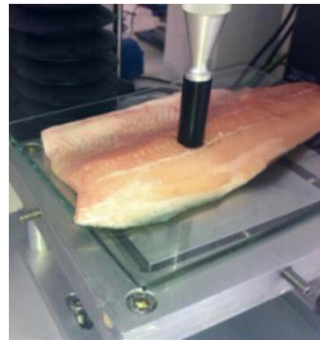
Value chain



Fish quality:

Omega 3 content?

Texture





As an input:

- Also need for a holistic view on "good practice" in the value chain
- Be aware that optimizing sustainability or environmental performance in one link of the value chain may have effects on other links in the chain.
- There is a huge potential in aquaculture and we shall contribute to overcome the challenges of our sector.

➤ Thank you very much.