

National Summary for Article 17 - Malta

1 General information

1.1 Number of SCIs and SACs

The table below provides the total number and total area of sites proposed and designated under the Habitats Directive (Sites of Community Importance, SCIs & Special Areas of Conservation, SACs), terrestrial area of sites and number and area of marine sites (i.e. any site with a marine component).

Empty cells in tables mean that the component requested is not applicable.

	All		Terrestrial	Marine	
	No.	Area (km ²)	Area (km ²)	No.	Area (km ²)
SCIs & SACs	32	233	42	5	191
SACs only	0	0	0	0	0

Date of database used: 31-10-2012

1.2 Number of sites with comprehensive management plans (Art. 6(1))

Number of sites for which comprehensive management plans have been adopted: **7**

Percentage of network area covered by comprehensive management plans: **22%**

Number of sites for which management plans are under preparation (optional): **28**

2. Number of habitats and species/subspecies

The table in this section gives the number of habitat types and species/subspecies in each Annex of the Habitats Directive by biogeographical and marine regions in Malta. The species and habitats with the following presence status are included in the table: 'present', species of which taxonomy is not clear (SR TAX), species where the link to the corresponding name in the Habitats Directive is not clear (LR), species extinct after the Directive came into force (EX) and optional reports (OP).

Region	HABITATS		SPECIES					
	Annex I		Annex II		Annex IV		Annex V	
	Non-priority	Priority	Non-priority	Priority	Including those in Annex II	Excluding those in Annex II	Including those in Annex II	Excluding those in Annex II
Number of habitats & species in the MS	23	7	18	6	45	24	4	4
	30		24		45		4	
Mediterranean	20	6	16	5	34	16		
Marine Mediterranean	3	1	2	1	11	8	4	4

Additional information:

Number of assessments of marginal habitat types: **none**

Number of assessments of marginal & occasional species: **5**

Number of assessments of newly arriving species: **none**

Number of species regionally extinct prior the Habitats Directive came into force: **1**

Number of species regionally extinct after the Habitats Directive came into force: **none**

Number of species globally extinct after the Habitats Directive came into force: **none**

Number of assessments of species/habitat types for which no reports received: **none**

3. Information on Conservation status

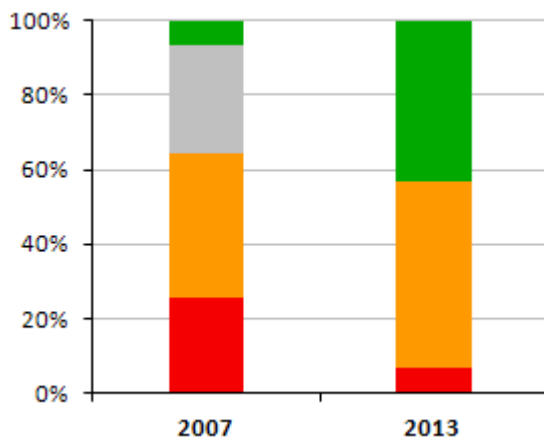
Please note that the figures shown for 2001-2006 and 2007-2012 are not necessarily directly comparable because there can be differences in number of assessments between the reporting rounds, changes in how some features were allocated in biogeographical regions etc.

The following have been excluded from all statistics under section 3:

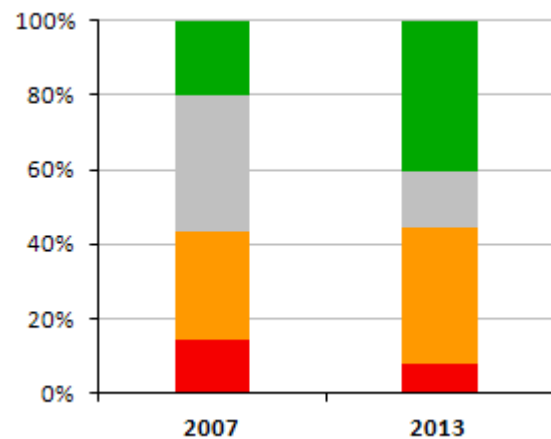
- Habitats reported as marginal (MAR) or with scientific reserve (SR)
- Species reported as marginal (MAR), occasional (OCC), newly arriving (ARR), regionally extinct before the Habitats Directive came into force (PEX) and introduced species (INT). In addition reports that give only an information about species without evaluation of the conservation status
- Redundant reports provided for both marine and terrestrial regions for habitats and species and species for which only one, either terrestrial or marine report was expected (IRM).

3.1 a) Overall assessment of conservation status of habitats and species (%)

These figures show the percentage of biogeographical assessments in each category of conservation status for habitats and species, respectively. The information on which these figures are based are presented in the table below the figures (real values).



Conservation status of **habitats**



Conservation status of **species**

■ FV - Favourable ■ NA - Not reported ■ XX - Unknown ■ U1 - Unfavourable inadequate ■ U2 - Unfavourable bad

Year of assessment	HABITATS					SPECIES				
	FV	NA	XX	U1	U2	FV	NA	XX	U1	U2
2007	2		9	12	8	11		20	16	8
2013	13			15	2	21		8	19	4

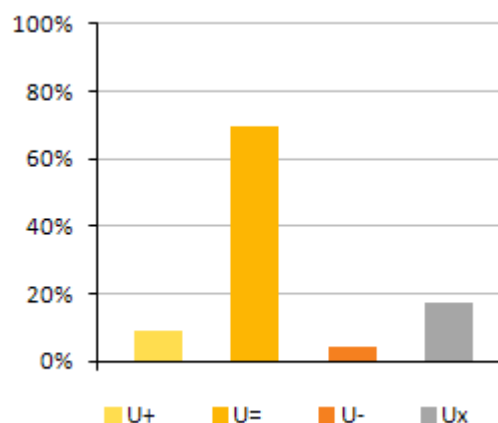
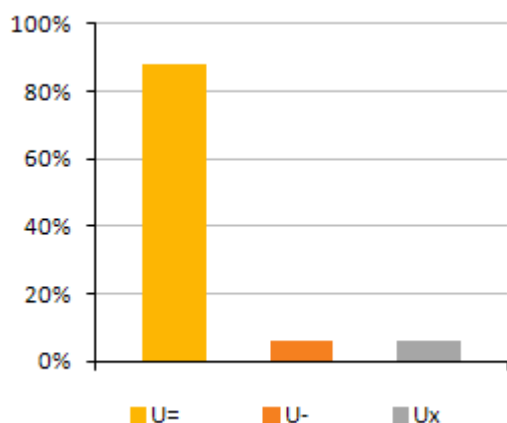
3.1 b) Percentage of assessments where the conservation status has changed between the reporting periods

This table shows the percentage of assessments where the Member State has indicated a change between two reporting rounds (2001-2006 and 2007-2012) and the percentages of all reported changes where the change has been reported as a genuine change. Change can be either a change from one conservation status category to another or a change within the same category (within the qualifiers '-', '+', '=', 'x'). Data have been taken from the 'audit trail table' where the Member State indicates the nature of change. The Member State's results on this audit trail are shown under section 7.

	SPECIES	HABITAT TYPES
% of assessments that changed	35%	53%
% of total changes considered genuine	4%	3%

3.2 Improving/deteriorating trends of habitats and species with an unfavourable conservation status (%)

These figures show the proportion of unfavourable assessments (U1 & U2) which are improving, deteriorating, stable or unknown.



Habitats – overall trend in Conservation Status

Species – overall trend in Conservation Status

U (+) = unfavourable (inadequate and bad) improving, U (=) = unfavourable stable, U (-) = unfavourable declining, U (x) = unfavourable unknown trend

This table shows trends in conservation status of habitats & species separately for those cases where the overall conclusion is unfavourable inadequate (U1) and unfavourable bad (U2).

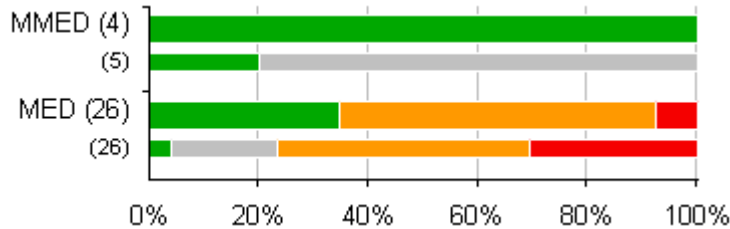
Qualifiers of CS	U1+	U1=	U1-	U1x	U2+	U2=	U2-	U2x
Habitats		13	1	1		2		
Species	2	13	1	3		3		1

Note: U1+ = unfavourable-inadequate improving, U1= = unfavourable-inadequate stable, U1- = unfavourable-inadequate declining, U1x = unfavourable-inadequate trend unknown, U2+ = unfavourable-bad improving, U2= = unfavourable-bad stable, U2- = unfavourable-bad declining, U2x = unfavourable-bad trend unknown

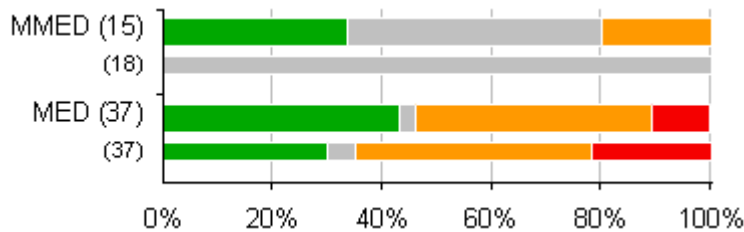
3.3 Overall assessment of conservation status of habitats and species by biogeographical/marine region (%)

These figures show the percentage of assessments in each of conservation status category by biogeographical and marine region, for habitats and species, respectively.

Please note that some habitats reported as terrestrial in 2001-2006 have been reported as marine in 2007-2012 (e.g. estuaries). Some species (e.g. seals, marine turtles) which in some cases were reported for both marine and terrestrial regions were only reported for one region in 2007-2012 (this statement only applies to Member States with marine regions).



Conservation status of **habitats** in biogeographical and marine regions



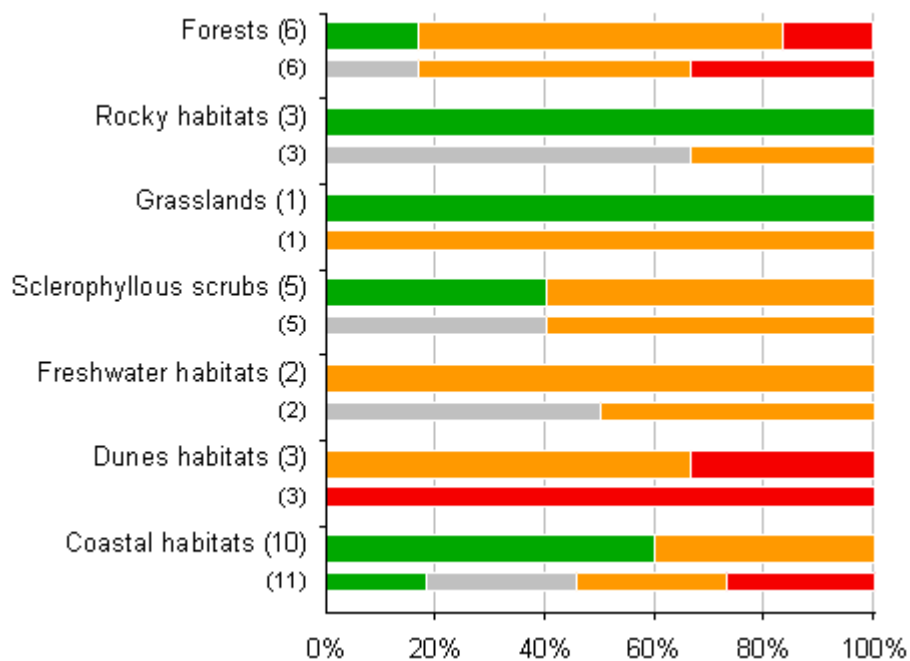
Conservation status of **species** in biogeographical and marine regions

Note: wide bar corresponds to the 2007-2012 reporting period, and the narrow bar to the 2001-2006 reporting period. The number in brackets corresponds to the number of biogeographical assessments in the category.

3.4 Overall assessment of conservation status by habitat category/species group (%)

These figures show the percentage of biogeographical and marine assessments in each conservation status category by habitat category and by taxonomic group, for habitats and species, respectively.

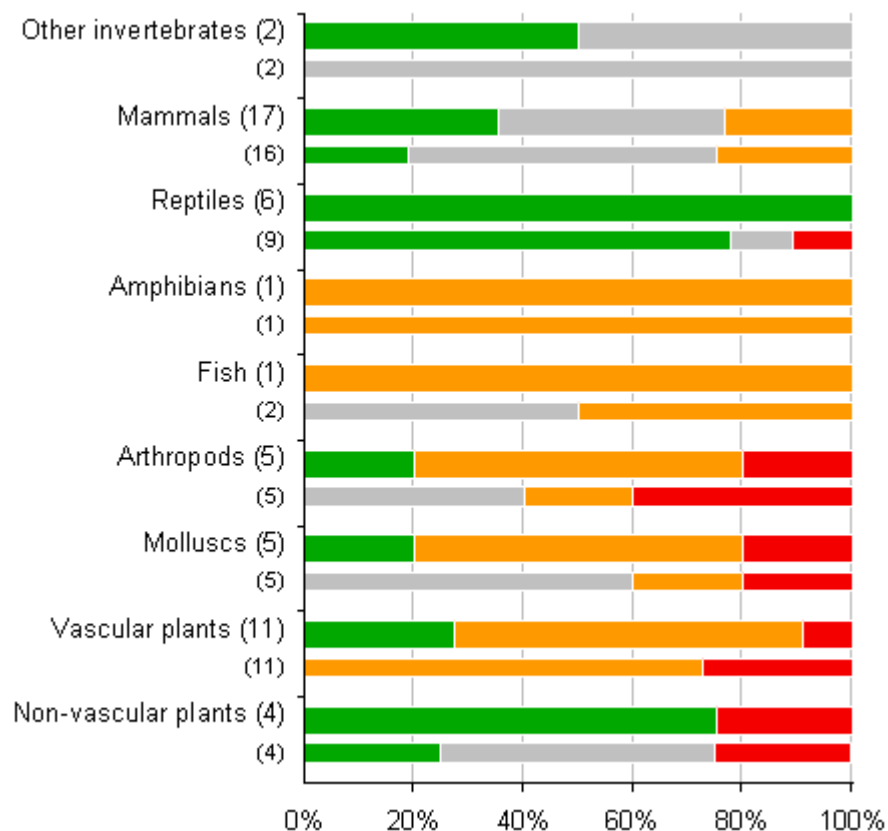
The figures show the proportion of assessments in each conservation status class for 2007-2012 (upper bar) and 2001-2006 (lower bar). The information (number of assessments) on which these figures are based are presented in the tables below each figure (real values).

HabitatsConservation status of **habitats** in biogeographical and marine regions

Note: wide bar corresponds to the 2007-2012 reporting period, and the narrow bar to the 2001-2006 reporting period. The number in brackets corresponds to the number of biogeographical assessments in the category.

Group	Year of assessment	HABITATS				
		FV	NA	XX	U1	U2
Forests	2007			1	3	2
	2013	1			4	1
Rocky habitats	2007			2	1	
	2013	3				
Grasslands	2007				1	
	2013	1				
Sclerophyllous scrubs	2007			2	3	
	2013	2			3	
Freshwater habitats	2007			1	1	
	2013				2	
Dunes habitats	2007					3
	2013				2	1
Coastal habitats	2007	2		3	3	3
	2013	6			4	

NB: Coastal habitats cover coastal and halophytic habitats (code 1xxx) and Dunes habitat types cover coastal sand dunes and inland dunes (code 2xxx) as listed in the Habitats Directive

SpeciesConservation status of **species** in biogeographical and marine regions

Note: wide bar corresponds to the 2007-2012 reporting period, and the narrow bar to the 2001-2006 reporting period. The number in brackets corresponds to the number of biogeographical assessments in the category.

Group	Year of assessment	SPECIES				
		FV	NA	XX	U1	U2
Other invertebrates	2007			2		
	2013	1		1		
Mammals	2007	3	9	4		
	2013	6	7	4		
Reptiles	2007	7	1			1
	2013	6				
Amphibians	2007				1	
	2013				1	
Fish	2007			1	1	
	2013				1	
Arthropods	2007			2	1	2
	2013	1			3	1
Molluscs	2007			3	1	1
	2013	1			3	1
Vascular plants	2007				8	3
	2013	3			7	1
Non-vascular plants	2007	1		2		1
	2013	3				1

3.5 Reasons for change in reported values of parameters (%)

This table provides information on reasons for changes of values reported for the parameters 'Range', 'Area (habitat)', 'Population' and 'Habitat for the species' between reporting periods 2001-2006 and 2007-2012. The table gives the percentage of habitats/species assessments for which a particular reason for change in values was reported. The reporting format lists three principal reasons for change: genuine change, better knowledge/data and use of different method.

Reason for change	Habitats		Species/subspecies		
	Surface area of range	Surface area of habitat	Surface area of range	Population size	Area of habitat for the species
Genuine change			6	4	2
Better knowledge/data	90	83	75	63	67
Use of different method	3	3	4	2	17

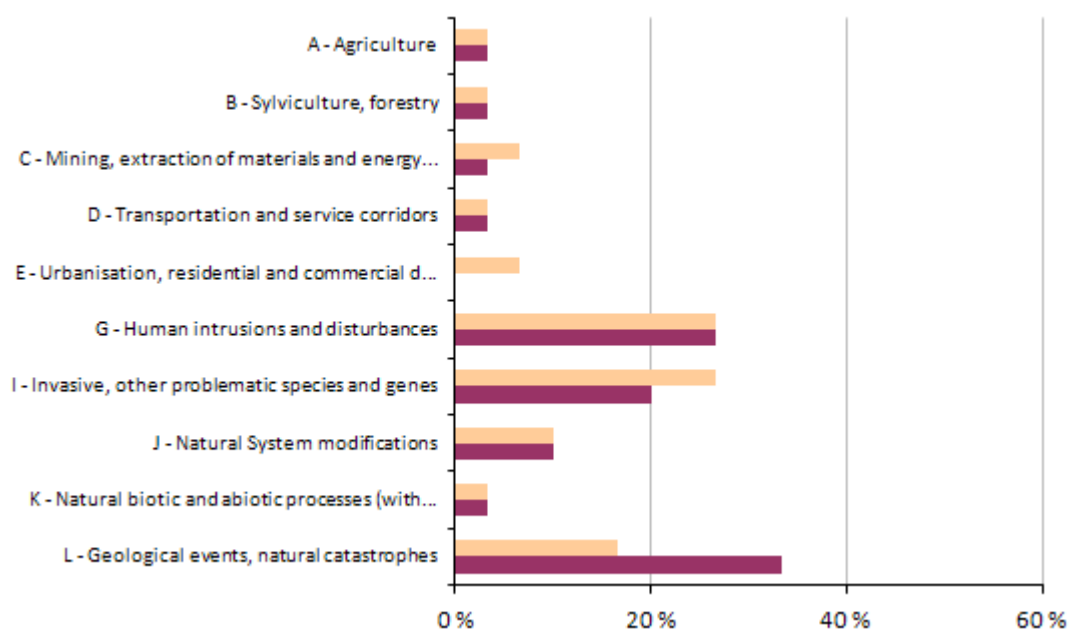
Note: More than one reason for change can be reported for each habitat and species.

4 Frequency of main pressures and threats (%) ¹

This section provides information on the relative importance of pressures and threats (aggregated to level 1) reported for habitats and species. The figures show the percentage of biogeographical assessments reported as being affected by one or more pressures or threats categorised as of 'high importance'. The information for the number of pressures and threats on which these figures are based are presented in the tables below the figures.

¹ The following have been excluded:

- Habitats reported as marginal or with scientific reserve.
- Species reported as marginal, occasional, newly arriving, regionally extinct before the Habitats Directive came into force and introduced species. In addition reports that give only an information about species without evaluation of the conservation status.
- Redundant reports provided for both marine and terrestrial regions for habitats and species and species for which only one, either terrestrial or marine report was expected.



% of **habitat assessments** reported as being affected by one or more 'high' importance pressures/threats

■ pressure ■ threat

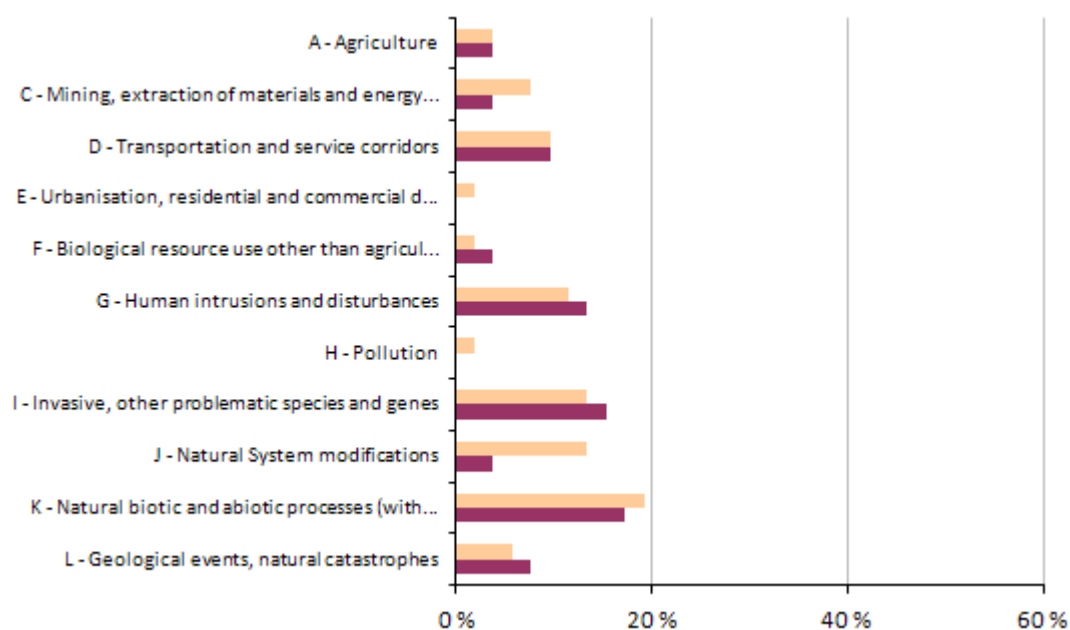
Note: Threats and pressures categories not reported are omitted.

Total number of assessments considered in the calculation: **30**

Number of assessments with no high ranking threats (or no threats at all reported): **11**

Number of assessment with no high ranking pressures (or no pressures at all): **10**

Pressures and threats	HABITATS	
	Number of threats	Number of pressures
A - Agriculture	1	1
B - Sylviculture, forestry	1	1
C - Mining, extraction of materials and energy production	1	2
D - Transportation and service corridors	1	1
E - Urbanisation, residential and commercial development		2
G - Human intrusions and disturbances	8	8
I - Invasive, other problematic species and genes	6	8
J - Natural System modifications	3	3
K - Natural biotic and abiotic processes (without catastrophes)	1	1
L - Geological events, natural catastrophes	10	5



% of **species assessments** reported as being affected by one or more 'high' importance pressures/threats

■ pressure ■ threat

Note: Threats and pressures categories not reported are omitted.

Total number of assessments considered in the calculation: **52**

Number of assessments with no high ranking threats (or no threats at all reported): **30**

Number of assessment with no high ranking pressures (or no pressures at all): **31**

Pressures and threats	SPECIES	
	Number of threats	Number of pressures
A - Agriculture	2	2
C - Mining, extraction of materials and energy production	2	4
D - Transportation and service corridors	5	5
E - Urbanisation, residential and commercial development		1
F - Biological resource use other than agriculture & forestry	2	1
G - Human intrusions and disturbances	7	6
H - Pollution		1
I - Invasive, other problematic species and genes	8	7
J - Natural System modifications	2	7
K - Natural biotic and abiotic processes (without catastrophes)	9	10
L - Geological events, natural catastrophes	4	3

5 Natura 2000 coverage and conservation measures ²

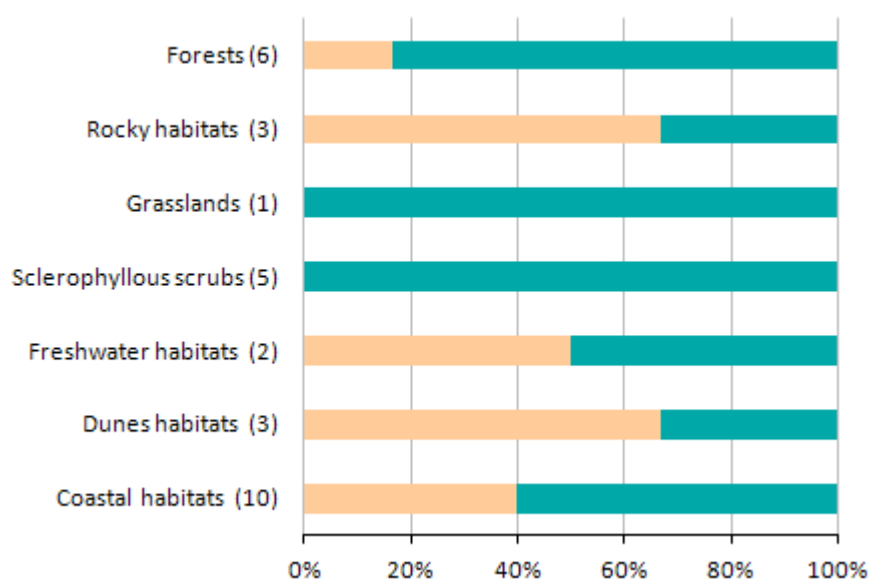
Note: The figures under section 5 cover only Annex I habitat types and Annex II species.

5.1 Natura 2000 coverage (%)

This section presents statistics on the coverage of Annex I habitats and Annex II species in Natura 2000 sites by habitat category/species group. These figures show the percentage of habitats/species assessments in three classes based on coverage by Natura 2000 sites, for habitats and species, respectively. The geometric mean is used if Member States have reported minimum and maximum values. The information for the number of assessments per coverage by Natura 2000 on which these figures are based are presented in the tables below the figures (real values). Please note that these statistics are based on Article 17 data and are independent from the results of the Biogeographical Seminars.

² The following have been excluded:

- Habitats reported as marginal or with scientific reserve.
- Species reported as marginal, occasional, newly arriving, regionally extinct before the Habitats Directive came into force and introduced species. In addition reports that give only an information about species without evaluation of the conservation status.
- Redundant reports provided for both marine and terrestrial regions for habitats and species and species for which only one, either terrestrial or marine report was expected.

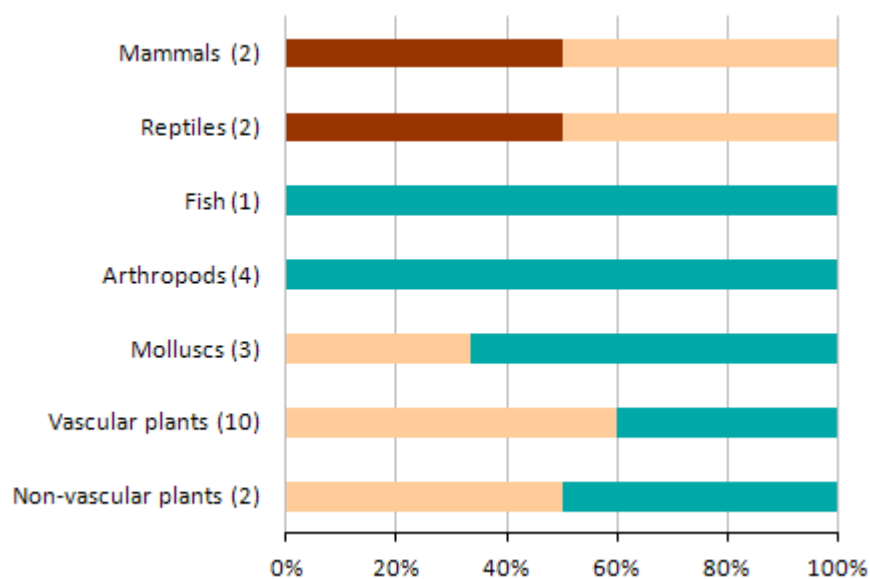


% of **habitat assessments** in 3 classes of coverage by Natura 2000 sites

coverage by Natura 2000 sites : ■ 0-24% ■ 25-74% ■ 75-100%

Note: The number in brackets corresponds to the number of biogeographical assessments in the habitat category.

Group	HABITATS			
	0-24%	25-74%	75-100%	unknown
Forests		1	5	
Rocky habitats		2	1	
Grasslands			1	
Sclerophyllous scrubs			5	
Freshwater habitats		1	1	
Dunes habitats		2	1	
Coastal habitats		4	6	



% of **species assessments** in 3 classes of coverage by Natura 2000 sites

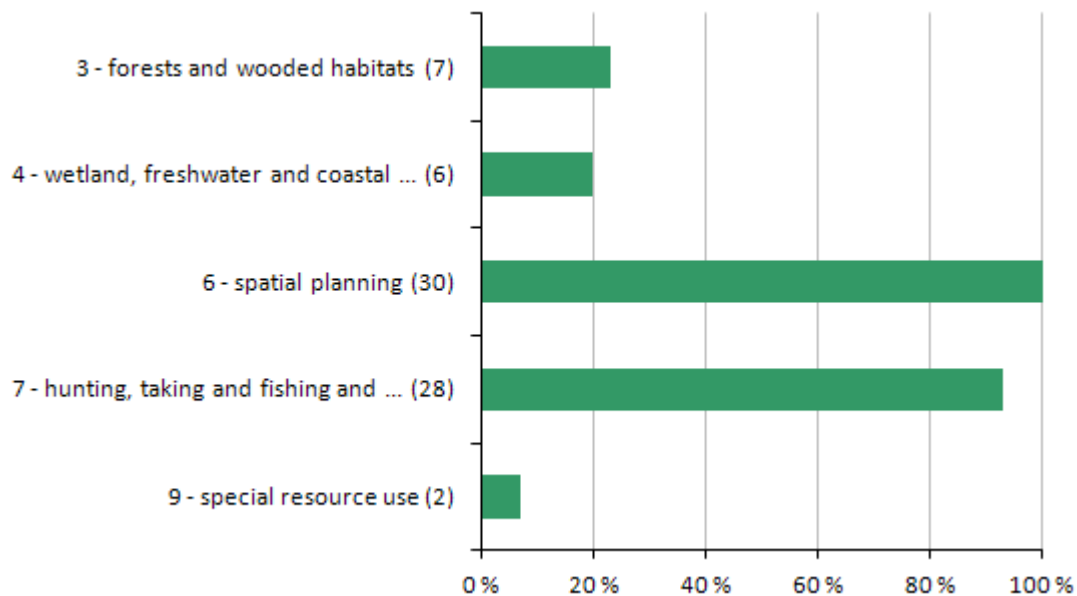
coverage by Natura 2000 sites : ■ 0-24% ■ 25-74% ■ 75-100%

Note: The number in brackets corresponds to the number of biogeographical assessments in the species category.

Group	SPECIES			
	0-24%	25-74%	75-100%	unknown
Mammals	1	1		
Reptiles	1	1		
Fish			1	
Arthropods			4	
Molluscs		1	2	
Vascular plants		6	4	
Non-vascular plants		1	1	

5.2 Main conservation measures (%)

This section provides information on the relative importance of conservation measures at level 1 implemented during the reporting period 2007-2012 for Annex I habitats and Annex II species. The figures show the percentage of biogeographical assessments for which one or more 'high importance' conservation measures was implemented. Measures not reported are omitted.

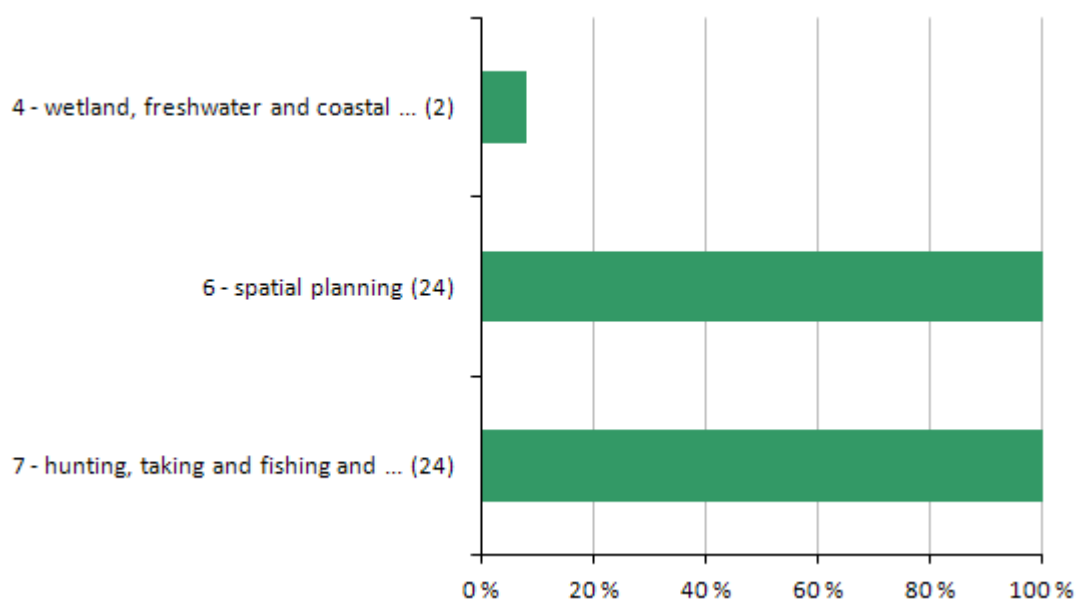


% of **habitat assessments** for which one or more 'high' importance measures were reported

Note: Numbers in brackets correspond to the number of assessments where measure 1, 2, etc. is noted as being of high importance. Occasional and extinct habitat types have been included in calculations.

Total number of assessments considered in the calculation: **30**

Number of assessments with no high ranking conservation measures or no conservation measures at all reported: **none**



% of **species assessments** for which one or more 'high' importance measures were reported

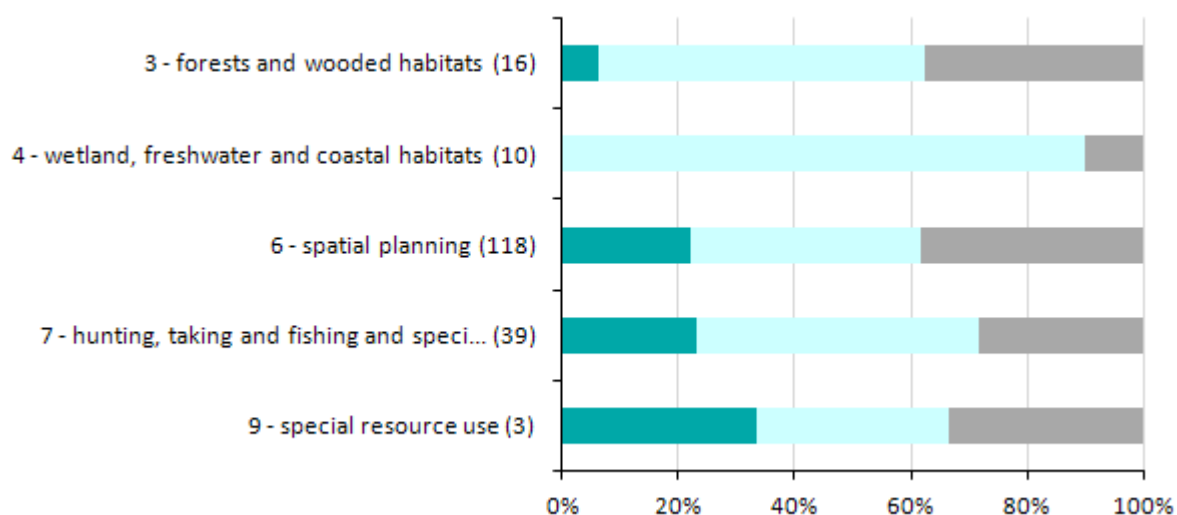
Note: Numbers in brackets correspond to the number of assessments where measure 1, 2, etc. is noted as being of high importance. Occasional and extinct species have been included in calculations.

Total number of assessments considered in the calculation: **24**

Number of assessments with no high ranking conservation measures or no conservation measures at all reported: **none**

5.3 Impact of conservation measures (%)

This section provides information on the effects of implemented conservation measures for each level 1 measure category. The figures show, for each level 1 measure category, the frequency of reported effects. The information for the number of assessments per measure category on which these figures are based are presented in the tables below the figures (full names of the measures are shown in the tables).

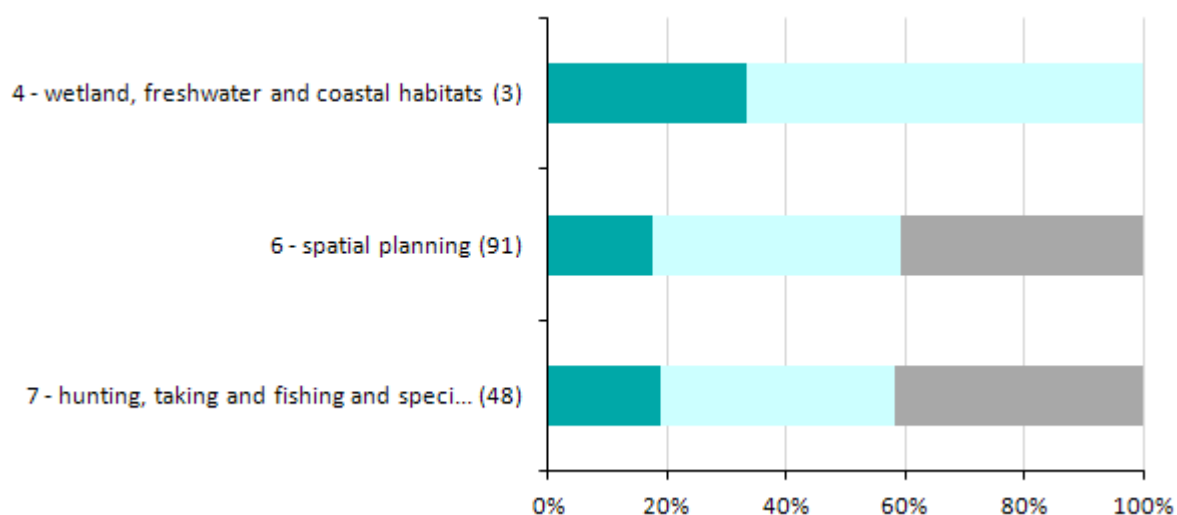


% of **habitat assessments** for which a particular effect of a measure was reported

■ maintain ■ enhance ■ longterm ■ no effect ■ unknown or not evaluated

Note: The numbers in brackets correspond to the numbers of biogeographical assessments for which one or more 'high' importance measure was reported.

Measure	HABITATS				
	maintain	enhance	longterm	no effect	unknown or not evaluated
3 - Measures related to forests and wooded habitats	1	9	6		
4 - Measures related to wetland, freshwater and coastal habitats		9	1		
6 - Measures related to spatial planning	26	47	45		
7 - Measures related to hunting, taking and fishing and species management	9	19	11		
9 - Measures related to special resource use	1	1	1		



% of **species assessments** for which a particular effect of a measure was reported

■ maintain ■ enhance ■ longterm ■ no effect ■ unknown or not evaluated

Note: The numbers in brackets correspond to the numbers of biogeographical assessments for which one or more 'high' importance measure was reported.

Measure	SPECIES				
	maintain	enhance	longterm	no effect	unknown or not evaluated
4 - Measures related to wetland, freshwater and coastal habitats	1	2			
6 - Measures related to spatial planning	16	38	37		
7 - Measures related to hunting, taking and fishing and species management	9	19	20		

6 Data quality and completeness ³

The aim of this section is to provide an overview of the data gaps in the report; most of these gaps are due to insufficient knowledge. This section does not refer to potential errors or technical problems in the Member State's report and concentrates on what is relevant for evaluating data completeness.

The tables give percentages of habitats/species assessments with unknown or missing information for components of conservation status and conclusions.

³ The statistics on missing information take into account that for the plant species listed in Annex V at the genus level only 'Overall assessment of conservation status' and 'Overall trend' are mandatory. The same approach was used for the species extinct after the Habitats Directive came into force.

6.1 a) Percentage of mandatory information that is missing (%)**Habitats**

Habitat range	Area	0
	Trend	0
	Reference value	0
	Conclusion	0
Habitat area	Area	0
	Trend	0
	Reference value	0
	Conclusion	0
Structure & functions	Conclusion	0
Future prospects	Conclusion	0
Pressures & threats		0
Natura 2000	Coverage	0
	Measures	0
Overall	Conclusion	0
	Trend	0
	Maps	0

Species

Species range	Area	0
	Trend	0
	Reference value	0
	Conclusion	0
Species population	Size	0
	Trend	0
	Reference value	0
	Conclusion	0
Habitat for species	Area	0
	Trend	0
	Area of suitable habitat*	33
	Conclusion	0
Future prospects	Conclusion	0
Pressures & threats		0
Natura 2000	Coverage	0
	Measures	0
Overall	Conclusion	0
	Trend	0
	Maps	0

*This field is a mandatory field in the reporting format, however there is an inconsistency between the reporting format and the evaluation matrix as raised in the FAQ dated 14.2.2013

6.1 b) Percentage of mandatory information reported as unknown (%)**Habitats**

Habitat range	Area	0
	Trend	10
	Reference value	0
	Conclusion	0
Habitat area	Area	0
	Trend	10
	Reference value	0
	Conclusion	0
Structure & functions	Conclusion	10
Future prospects	Conclusion	0
Pressures & threats		0
Natura 2000	Coverage	0
	Measures	0
Overall	Conclusion	0
	Trend	6
	Maps	0

Species

Species range	Area	6
	Trend	27
	Reference value	21
	Conclusion	19
Species population	Size	6
	Trend	33
	Reference value	27
	Conclusion	19
Habitat for species	Area	6
	Trend	13
	Area of suitable habitat*	0
	Conclusion	13
Future prospects	Conclusion	15
Pressures & threats		0
Natura 2000	Coverage	0
	Measures	0
Overall	Conclusion	15
	Trend	17
	Maps	6

*This field is a mandatory field in the reporting format, however there remained an inconsistency between the reporting format and the evaluation matrix as raised in the FAQ dated 14.2.2013

6.2 Methods used to estimate values or trends in Member State reports (%)

This section presents information about the quality of estimated values and trends in habitat and species biogeographical reports. For some parameters and trends, the reporting format requires an indication of which of three methods (complete survey or a statistically robust estimate, partial data with some extrapolation and/or modelling, expert opinion with no or minimal sampling) have been used to estimate the values or trends. The tables in this section present percentage of habitats/species assessments for which values were estimated by each of the three methods mentioned above.

Habitats

	Map	Range	Area	Area trend	Str.&Funct.	N2000	Average
Expert opinion (%)	3	3	3	7	7	3	4
Extrapolation (%)	47	47	47	43	60	53	49
Complete survey (%)	50	50	50	47	33	43	46
Absent data (%)	0	0	0	3	0	0	1

Species

	Map	Range	Population	Pop. trend	Habitat	N2000*	Average
Expert opinion (%)	23	19	27	21	25	8	21
Extrapolation (%)	52	56	54	50	48	54	52
Complete survey (%)	19	19	13	12	21	38	20
Absent data (%)	6	6	6	17	6	0	7

*This column covers only Annex II species

Source of information:

[Link to the national general report on CDR](#)

[Link to the national report for habitats on CDR](#)

[Link to the national report for species on CDR](#)

Other links (national links to be provided by the Member State):

<http://www.mepa.org.mt/biodiversity>

<http://www.mepa.org.mt/impnatareas>

7. List of habitats and species reported and their conservation status

This section lists habitats and species reported by the Member State and the overall conclusions on their conservation status for the reporting period 2001-2006 (indicated as 2007) and 2007-2012 (indicated as 2013). Information from the audit trail has been used for this list and its focus is on what was reported in 2013.

There are two tables for habitats and species if relevant for the Member State. The second table includes only habitats or species with a status OCC, SR, MAR etc. Please note that occurrences e.g. OCC if only reported in 2007, are included only in the second table.

In addition the list includes information provided by the Member State on the nature of change in the overall conservation status between the reporting periods.

The codes are the following :

- a = there is a genuine change: the overall conservation status improved (or deteriorated) due to natural or non-natural reasons (management, intervention, etc.)
- b1 = the change observed is due to more accurate data (e.g. better mapping of distribution) or improved knowledge (e.g. on ecology of species or habitat)
- b2 = the change observed is due to a taxonomic review: one taxon becoming several taxa, or vice versa
- c1 = the change observed is due to use of different methods to measure or evaluate individual parameters or the overall conservation status
- c2 = the change observed is mainly due to the use of different thresholds e.g. to fix Favourable reference values
- d = no information about the nature of change
- e = the change observed is due to less accurate or absent data than the one used in the previous reporting period
- nc = no change (e.g. overall trend in conservation status only evaluated in 2013 but assumed to be the same in 2007 or not known)

Habitats reported by Malta

Group	Name	Code	Year	MED	MMED
Forests	Mediterranean pine forests with endemic Mesogean pines	9540	2013 2007	U1= U1 nc	
	Olea and Ceratonia forests	9320	2013 2007	FV XX nc	
	Quercus ilex and Quercus rotundifolia forests	9340	2013 2007	U1= U2 c2	
	Salix alba and Populus alba galleries	92A0	2013 2007	U2= U2 nc	
	Southern riparian galleries and thickets (Nerio-Tamaricetea and Securinegion tinctoriae)	92D0	2013 2007	U1- U1 nc	
	Tetraclinis articulata forests	9570	2013 2007	U1= U1 b1	
Rocky habitats	Calcareous rocky slopes with chasmophytic vegetation	8210	2013 2007	FV U1 c2	
	Caves not open to the public	8310	2013 2007	FV XX nc	
	Submerged or partially submerged sea caves	8330	2013 2007		FV XX nc
Grasslands	Pseudo-steppe with grasses and annuals of the Thero-Brachypodietea	6220	2013 2007	FV U1 b1	
Sclerophyllous scrubs	Arborescent matorral with Laurus nobilis	5230	2013 2007	U1= U1 nc	
	Endemic phrygas of the Euphorbio-Verbascion	5430	2013 2007	FV XX nc	
	Sarcopoterium spinosum phrygas	5420	2013 2007	U1= U1+ a	

Group	Name	Code	Year	MED	MMED
	Thermo-Mediterranean and pre-desert scrub	5330	2013 2007	FV XX nc	
	West Mediterranean cliff-top phryganas (<i>Astragalo-Plantaginietum subulatae</i>)	5410	2013 2007	U1= U1 nc	
Freshwater habitats	Hard oligo-mesotrophic waters with benthic vegetation of <i>Chara</i> spp.	3140	2013 2007	U1x XX nc	
	Mediterranean temporary ponds	3170	2013 2007	U1= U1 c2	
Dunes habitats	Crucianellion <i>maritimae</i> fixed beach dunes	2210	2013 2007	U1= U2 c2	
	Dunes with <i>Euphorbia terracina</i>	2220	2013 2007	U2= U2 c2	
	Embryonic shifting dunes	2110	2013 2007	U1= U2 c2	
Coastal habitats	Annual vegetation of drift lines	1210	2013 2007	U1= U2 c2	
	Coastal lagoons	1150	2013 2007	U1= U1- c2	
	Mediterranean and thermo-Atlantic halophilous scrubs (<i>Sarcocornetea fruticosi</i>)	1420	2013 2007	FV U1 c2	
	Mediterranean salt meadows (<i>Juncetalia maritimi</i>)	1410	2013 2007	U1= U2 c2	
	Mediterranean salt steppes (<i>Limonietalia</i>)	1510	2013 2007	FV FV	
	Posidonia beds (<i>Posidonion oceanicae</i>)	1120	2013 2007		FV FV
	Reefs	1170	2013 2007		FV XX b1
	Salicornia and other annuals colonizing mud and sand	1310	2013 2007	U1= U2 c2	
	Sandbanks which are slightly covered by sea water all the time	1110	2013 2007		FV XX nc
	Vegetated sea cliffs of the Mediterranean coasts with endemic <i>Limonium</i> spp.	1240	2013 2007	FV U1 c2	

Habitat types reported as scientific reserve (SR), marginal (MAR), invalid report in marine region (IRM) etc. (only listed when a scientific reserve etc has been reported)

Not Applicable

Species reported by Malta

Group	Name	Code	Year	MED	MMED
Non-vascular plants	<i>Lithothamnium coralloides</i>	1376	2013 2007		FV XX nc
	<i>Petalophyllum ralfsii</i>	1395	2013 2007	FV FV	
	<i>Phymatholithon calcareum</i>	1377	2013 2007		FV XX nc

Group	Name	Code	Year	MED	MMED
	Riella helicophylla	1391	2013 2007	U2= U2 b1	
Vascular plants	Anacamptis urvilleana	4102	2013 2007	U1= U1 nc	
	Asplenium hemionitis	1424	2013 2007	U1x U2 b1	
	Cremonophyton lanfrancoi	4079	2013 2007	U1= U1 b1	
	Crepis pusilla	4082	2013 2007	U2= U2- nc	
	Elatine gussonei	4092	2013 2007	FV U1 c2	
	Helichrysum melitense	4083	2013 2007	U1= U1 b1	
	Hyoseris frutescens	4084	2013 2007	FV U1 c2	
	Linaria pseudolaxiflora	4114	2013 2007	U1= U2- b1	
	Ophrys melitensis	4105	2013 2007	U1= U1 nc	
	Orobanche densiflora	4106	2013 2007	FV U1 c2	
	Palaeocyaneus crassifolius	4085	2013 2007	U1= U1 b1	
Molluscs	Gibbula nivosa	2578	2013 2007		U1x XX b1
	Lampedusa imitatrix	4060	2013 2007	U1= U1 nc	
	Lampedusa melitensis	4061	2013 2007	U2= U2 nc	
	Lithophaga lithophaga	1027	2013 2007		FV XX nc
	Pinna nobilis	1028	2013 2007		U1- XX b1
Arthropods	Armadillidium ghardalamensis	4010	2013 2007	FV U1 b1	
	Brachytrupes megacephalus	4047	2013 2007	U1+ U2 a	
	Myrmecophilus baronii	4051	2013 2007	U2x XX b1	
	Pseudoseriscius cameroni	4025	2013 2007	U1+ U2 a	
	Scyllarides latus	1090	2013 2007		U1x XX b1
Fish	Aphanius fasciatus	1152	2013 2007	U1= U1 b1	
Amphibians	Discoglossus pictus	1189	2013 2007	U1= U1- nc	
Reptiles	Caretta caretta	1224	2013 2007		FV XX nc

Group	Name	Code	Year	MED	MMED
	Chalcides ocellatus	1274	2013 2007	FV FV	
	Coluber viridiflavus	1284	2013 2007	FV FV	
	Elaphe situla	1293	2013 2007	FV FV	
	Podarcis filfolensis	1237	2013 2007	FV FV	
	Telescopus fallax	1289	2013 2007	FV FV	
Mammals	Balaenoptera physalus	2621	2013 2007		XX XX
	Crocidura sicula	4001	2013 2007	FV XX nc	
	Delphinus delphis	1350	2013 2007		XX XX
	Erinaceus algirus	5978	2013 2007	FV FV	
	Hypsugo savii	5365	2013 2007	XX	
	Myotis punicus	5005	2013 2007	U1= U1 nc	
	Nyctalus noctula	1312	2013 2007	FV XX b1	
	Physeter catodon	5031	2013 2007		XX XX
	Pipistrellus kuhlii	2016	2013 2007	FV FV	
	Pipistrellus pipistrellus	1309	2013 2007	FV	
	Pipistrellus pygmaeus	5009	2013 2007	FV FV	
	Plecotus austriacus	1329	2013 2007	U1= U1 nc	
	Rhinolophus hipposideros	1303	2013 2007	U1= U1 nc	
	Stenella coeruleoalba	2034	2013 2007		XX XX
	Tadarida teniotis	1333	2013 2007	U1= U1 nc	
	Tursiops truncatus	1349	2013 2007		XX XX
	Ziphius cavirostris	2035	2013 2007		XX XX
Other invertebrates	Centrostephanus longispinus	1008	2013 2007		FV XX nc
	Corallium rubrum	1001	2013 2007		XX XX

Species reported as occasional (OCC), newly arriving (ARR), extinct prior the Habitats Directive came into force (PEX), marginal (MAR), invalid report in marine region (IRM) or introduced (INT) etc. (only listed when an occasional species etc has been reported). In addition species with optional reports (OP) and scientific reserves (SR) are listed here.

Group	Name	Code	Year	MED	MMED
Vascular plants	<i>Ophrys lunulata</i>	1905	2013 2007	PEX U2-	
Fish	<i>Alosa fallax</i>	1103	2013 2007	OCC XX	
Mammals	<i>Globicephala melas</i>	2029	2013 2007		OCC XX XX
	<i>Grampus griseus</i>	2030	2013 2007		OCC XX XX
	<i>Pseudorca crassidens</i>	2028	2013 2007		OCC XX
	<i>Steno bredanensis</i>	2033	2013 2007		OCC XX