

National Summary for Article 12

1. General information

1.1 Number and area of SPAs

The table below provides the total number and total area of sites designated under the Birds Directive (Special Protection Areas, SPAs), terrestrial area of sites and number and area of marine sites (i.e. any site with a marine component).

Empty cells in tables mean that the component requested was not applicable.

All		Terrestrial	Marine	
No.	Area (km ²)	Area (km ²)	No.	Area (km ²)
610	4410669	4125963	67	284706
Date of database used: 01-10-2013				

1.2 Number of SPAs with comprehensive management plans

Number of SPAs for which comprehensive management plans have been adopted: **162**

Percentage of the network area covered by comprehensive management plans: **28%**

Number of sites for which management plans are under preparation (optional field): **not reported**

1.3 Research and other work on bird populations

This section provides an indication of whether any of the activities listed in the section 6 of the General report have been carried out during the reporting period (for more details and references see the General report - the link to the report is given after the section 7 of this national summary).

National bird atlas: **no**

National bird monitoring overview(s): **yes**

National bird red list: **yes**

Other publication(s) of EU-wide interest: **yes**

2. Number of bird species/populations

This section provides a summary of the number of bird taxa (species and subspecific populations) for which a species-based report was completed, including a breakdown by season, and by subsets (e.g. Annex I, SPA trigger and non-native species).

Season	All native taxa	Annex I	SPA trigger	Non-native
Breeding	254	89	91	14
Wintering	33	7	17	0
Passage	4	4	4	0
Total	291	100	112	14

Note: These statistics are based on the revised checklists. The harmonisation of the codes used for 'presence status' was needed and the summary of changes in comparison to the reported information by the Member State can be consulted through this link: http://bd.eionet.europa.eu/activities/Reporting_Tool/Documents/Art_12_checklist_changes.

Occasional or vagrant species, and species that went extinct nationally prior to 1980 (i.e. around the time the Birds Directive came into force), if indicated are excluded.

Number of taxa that went extinct nationally after 1980: **1**

Number of newly arriving taxa: **none**

Number of taxa on checklist for which no reports received: **none**

3. Information on trends

This section provides information about trends of national bird populations.

Note: Article 12 reporting covers only a subset of Wintering taxa occurring in the national territory.

3.1 Population trends

The graphs show the percentages of taxa reported as having decreasing, stable, fluctuating, increasing or unknown population trends. Both short- and long-term population trends are included. The percentages are shown separately for breeding and wintering taxa.

Note: The trend category ‘unknown’ may include also taxa on the checklist for which no trend information was provided.



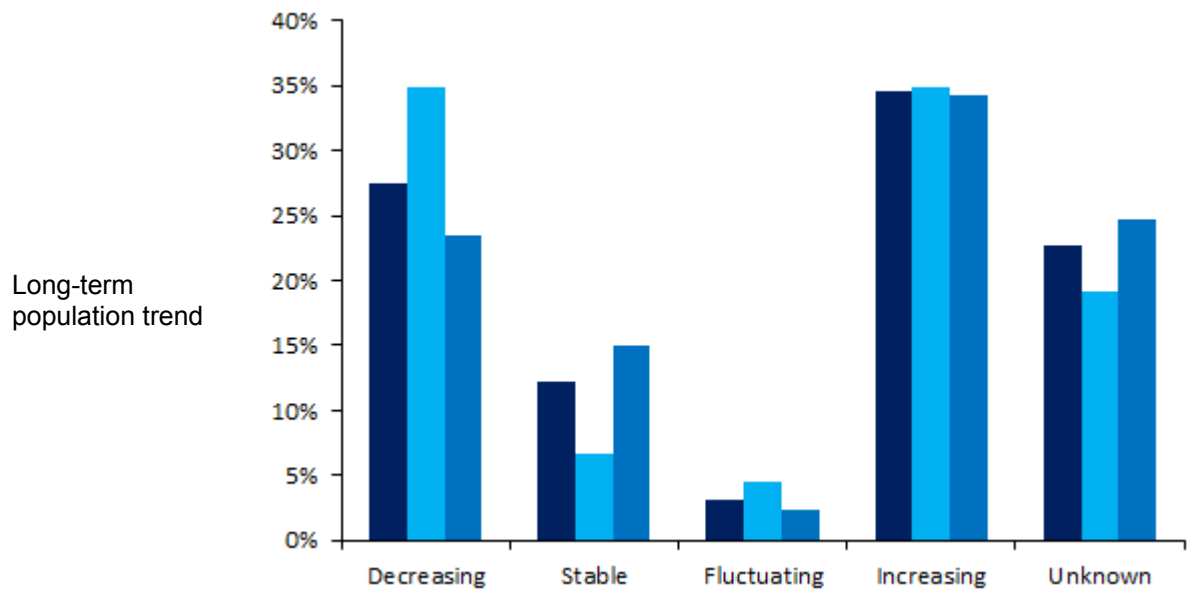
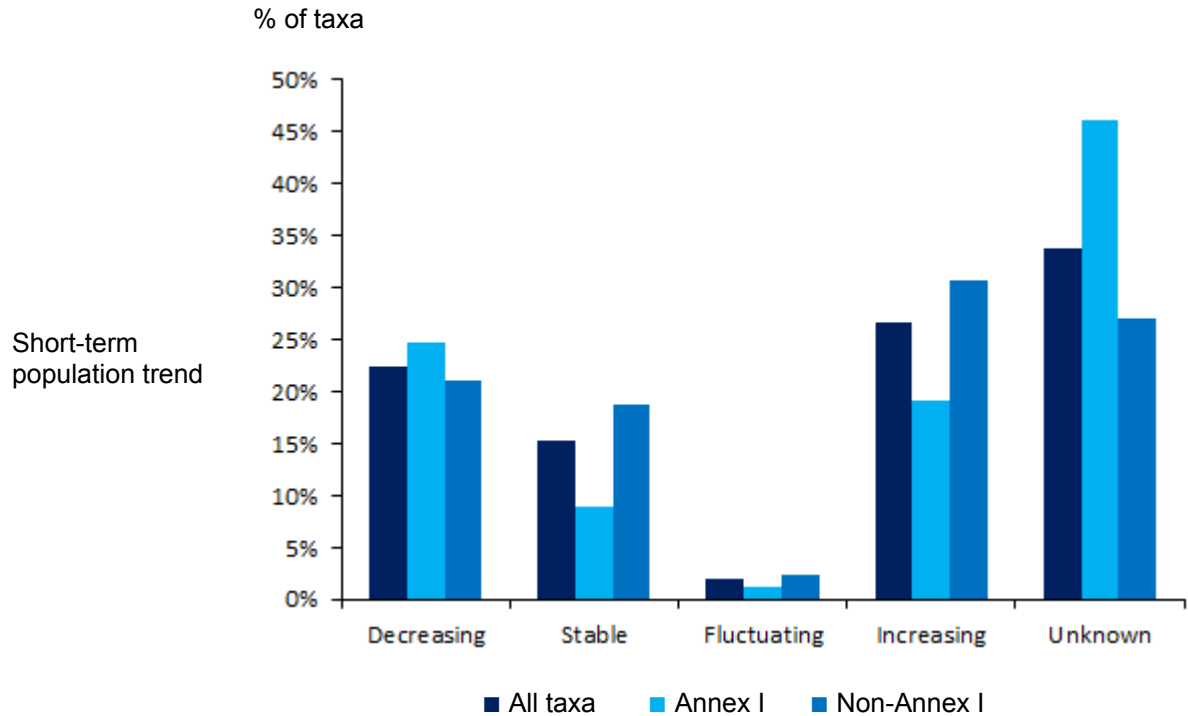
The table shows the numbers of taxa reported as having decreasing, stable, fluctuating, increasing or unknown population trends.

Population trend	Breeding taxa		Wintering taxa	
	Short-term	Long-term	Short-term	Long-term
Decreasing	57	70	5	4
Stable	39	31	4	1
Fluctuating	5	8	4	6
Increasing	68	88	20	22
Unknown	86	58		

3.2 Comparison of population trends for subsets of taxa

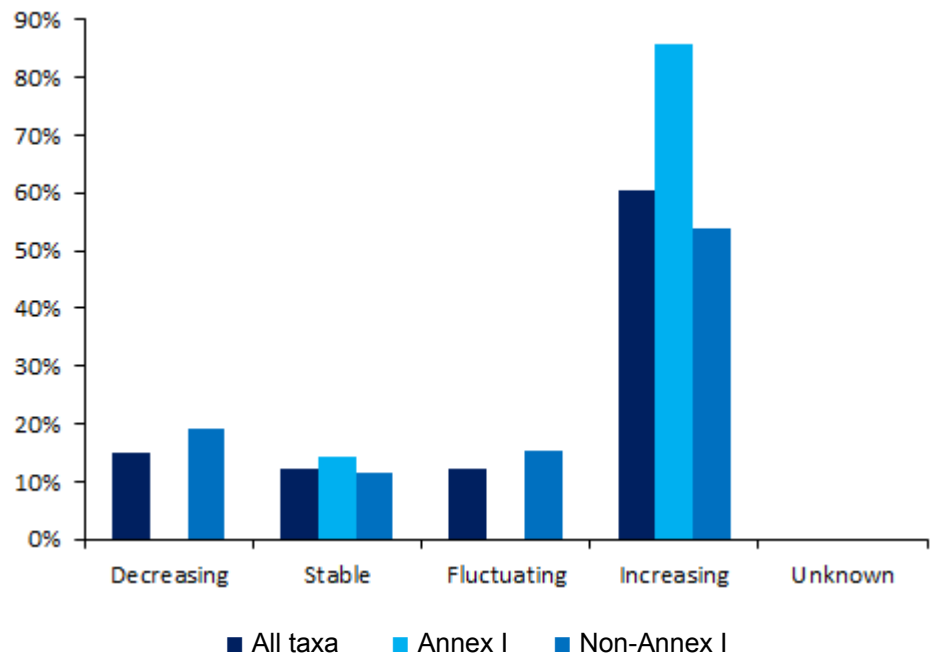
The graphs show the percentages of taxa (all, Annex I and non-Annex I) within the different trend categories (see section 3.1). Both short- and long-term population trends are included. The graphs show results separately for breeding and wintering taxa.

Breeding taxa

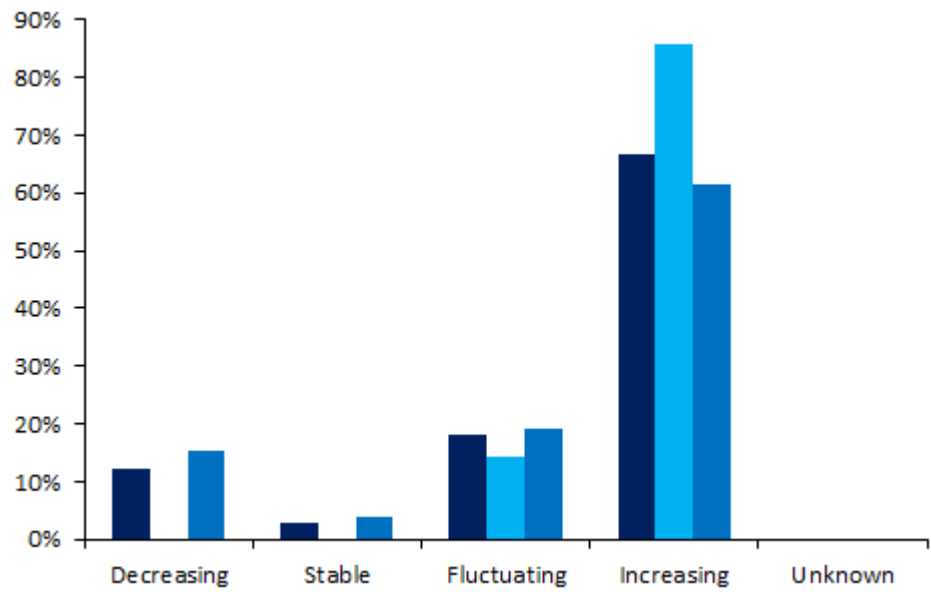


Wintering tax

Short-term population trend



Long-term population trend



The tables show the numbers of taxa (all, Annex I and non-Annex I) within the different trend categories.

Breeding taxa

Population trend	Short-term			Long-term		
	All taxa	Annex I	Non-Annex I	All taxa	Annex I	Non-Annex I
Decreasing	57	22	35	70	31	39
Stable	39	8	31	31	6	25
Fluctuating	5	1	4	8	4	4
Increasing	68	17	51	88	31	57
Unknown	86	41	45	58	17	41

Wintering taxa

Population trend	Short-term			Long-term		
	All taxa	Annex I	Non-Annex I	All taxa	Annex I	Non-Annex I
Decreasing	5		5	4		4
Stable	4	1	3	1		1
Fluctuating	4		4	6	1	5
Increasing	20	6	14	22	6	16
Unknown						

3.3 Comparison of short- and long-term population trends

This section provides a comparison of short- and long-term population trends for taxa, highlighting combinations that represent potential improvements (in green) and deteriorations (in red) in their national status. The tables in this section show the numbers of taxa for each combination of short- and long-term trends.

Breeding taxa

Long-term population trend	Short-term population trend					Total
	Decreasing	Stable	Fluctuating	Increasing	Unknown	
Decreasing	50	4			16	70
Stable	1	25			5	31
Fluctuating			5		3	8
Increasing	4	5		62	17	88
Unknown	2	5		6	45	58
Total	57	39	5	68	86	255

Wintering taxa

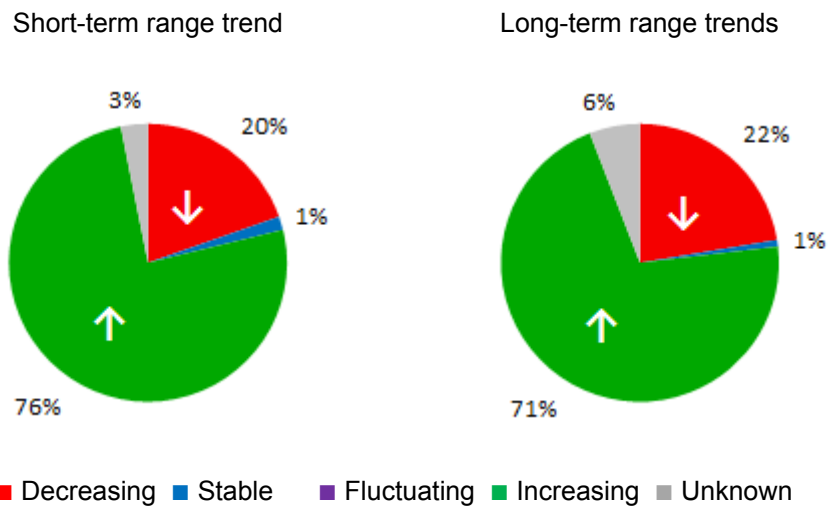
Long-term population trend	Short-term population trend					Total
	Decreasing	Stable	Fluctuating	Increasing	Unknown	
Decreasing	1	1	1	1		4
Stable		1				1
Fluctuating	3		1	2		6
Increasing	1	2	2	17		22
Unknown						
Total	5	4	4	20		33

3.4 Breeding range trends

Summary of the direction of short- and long-term range trends for breeding taxa.

The graphs show the percentages of taxa reported as having decreasing, stable, fluctuating, increasing or unknown breeding range trends. Both short- and long-term trends are included.

Note: The trend category 'unknown' may include also taxa on the checklist for which no trend information was provided.

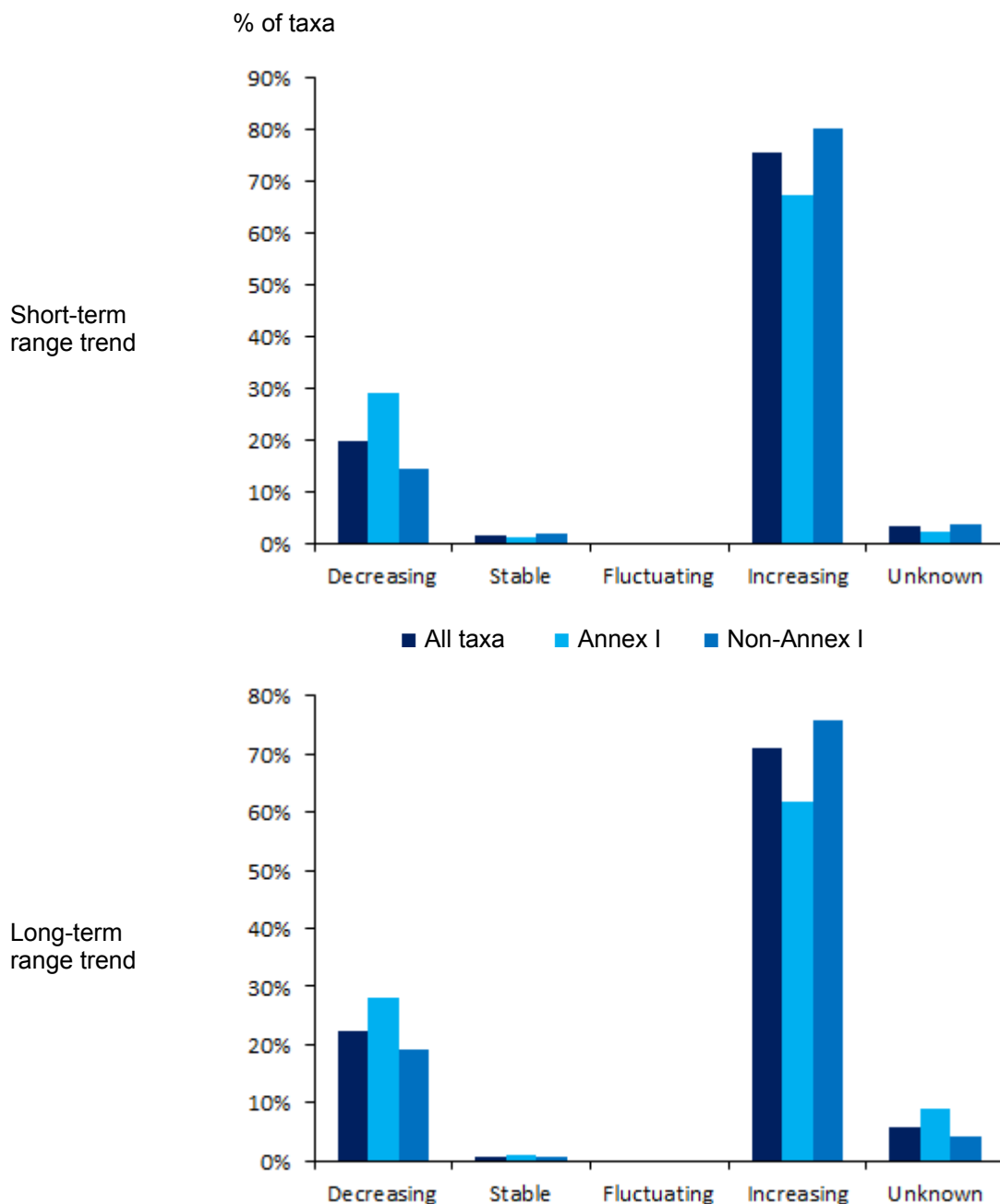


The table shows the numbers of taxa reported as having decreasing, stable, fluctuating, increasing or unknown range trends.

Breeding range trend	Breeding taxa	
	Short-term	Long-term
Decreasing	50	57
Stable	4	2
Fluctuating		
Increasing	193	181
Unknown	8	15

3.5 Comparison of breeding range trends for subsets of taxa

The graphs show the percentages of bird taxa (all, Annex I and non-Annex I) within the different trend categories (see section 3.4). Both short- and long-term population trends are included.



The table shows the numbers of bird taxa (all, Annex I and non-Annex I) within the different trend categories.

Population trend	Short-term			Long-term		
	All taxa	Annex I	Non-Annex I	All taxa	Annex I	Non-Annex I
Decreasing	50	26	24	57	25	32
Stable	4	1	3	2	1	1
Fluctuating						
Increasing	193	60	133	181	55	126
Unknown	8	2	6	15	8	7

3.6 Comparison of short- and long-term range trends

This section provides a comparison of short- and long-term range trends for taxa, highlighting combinations that represent potential improvements (in green) and deteriorations (in red) in national status. The table in this section shows the numbers of taxa for each combination of short- and long-term trends.

Long-term range trend	Short-term range trend					Total
	Decreasing	Stable	Fluctuating	Increasing	Unknown	
Decreasing	27			28	2	57
Stable				1	1	2
Fluctuating						
Increasing	21	1		157	2	181
Unknown	2	3		7	3	15
Total	50	4		193	8	255

4. Implementation of international species plans

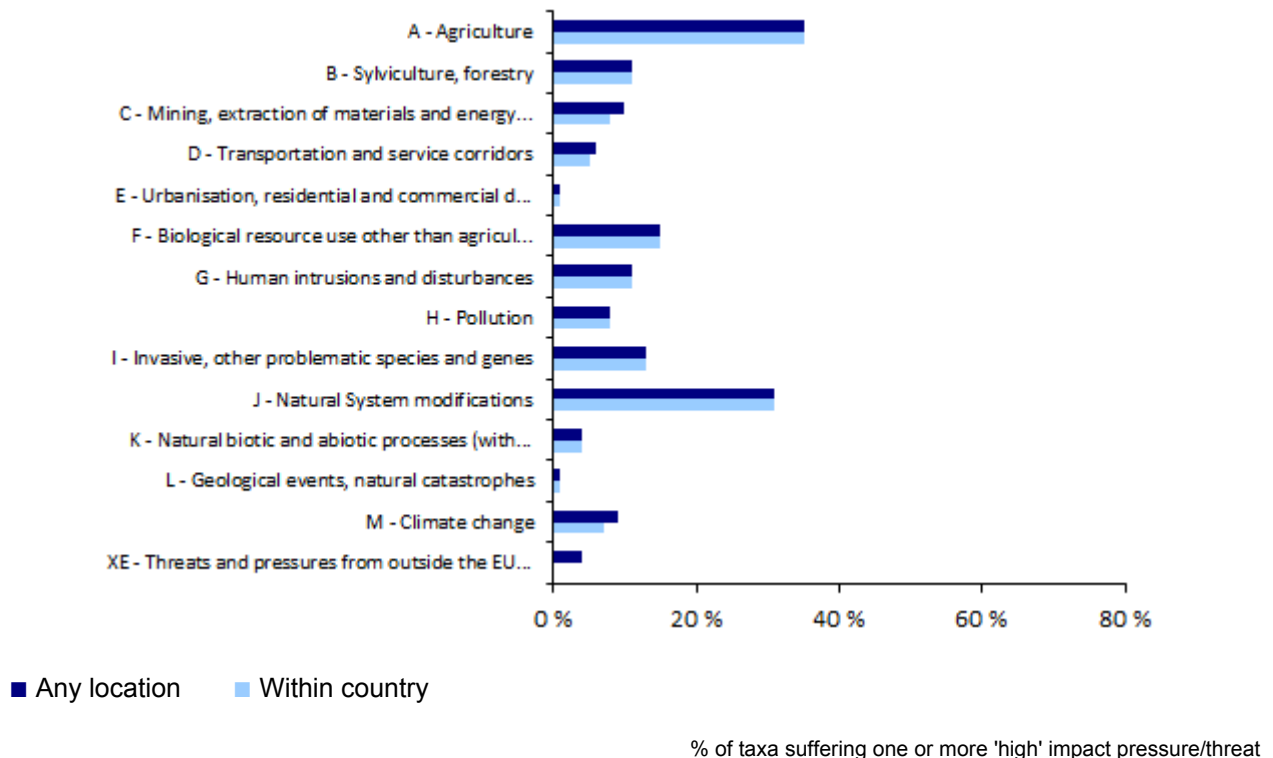
This section provides a summary of national implementation of international Species Action Plans (SAPs), Management Plans (MPs) and Brief Management Statements (BMSs) containing proposed actions in the Member State. The table shows the number of taxa with international plans and the number with national plans adopted.

Type of plan	No. of taxa with international SAP, MP and BMS	No. of taxa with national plan adopted
Species Action Plan (SAP)	23	8
Management Plan (MP)	10	
Brief Management Statement (BMS)	3	

5. Frequency of main pressures and threats

This section provides a summary of the main pressures/threats reported for taxa triggering SPA classification nationally. Only pressures/threats reported as having 'high' impact are considered in this section (one or more pressures/threats under each of the level 1 categories). For these high-impact pressures/threats a distinction is made in the bar-chart of those pressures/threats reported by the MS as primarily operating inside the Member State, or elsewhere.

Note: The figures under section 5 cover only taxa triggering SPA classifications nationally, i.e. those listed in Annex I, plus a selection of key migratory taxa for which SPAs have been classified, as identified in the species checklist.



Note: Threat/pressure categories not reported are omitted.

Total number of taxa considered in the calculation: **112**

Number of taxa with no high ranking pressure/threat within country (or no pressure/threat reported): **21**

Number of taxa with no high ranking pressure/threat in any location (or no pressure/threat reported): **21**

Pressure and threat categories	Number of taxa for which this threat/pressure was reported as having a 'high' impact
A - Agriculture	39
B - Sylviculture, forestry	12
C - Mining, extraction of materials and energy production	11
D - Transportation and service corridors	7
E - Urbanisation, residential and commercial development	1
F - Biological resource use other than agriculture & forestry	17
G - Human intrusions and disturbances	12
H - Pollution	9
I - Invasive, other problematic species and genes	15
J - Natural System modifications*	35
K - Natural biotic and abiotic processes (without catastrophes)	5
L - Geological events, natural catastrophes	1
M - Climate change	10
XE - Threats and pressures from outside the EU territory	4

*e.g. fire and fire suppression, dredging, water abstractions from surface waters

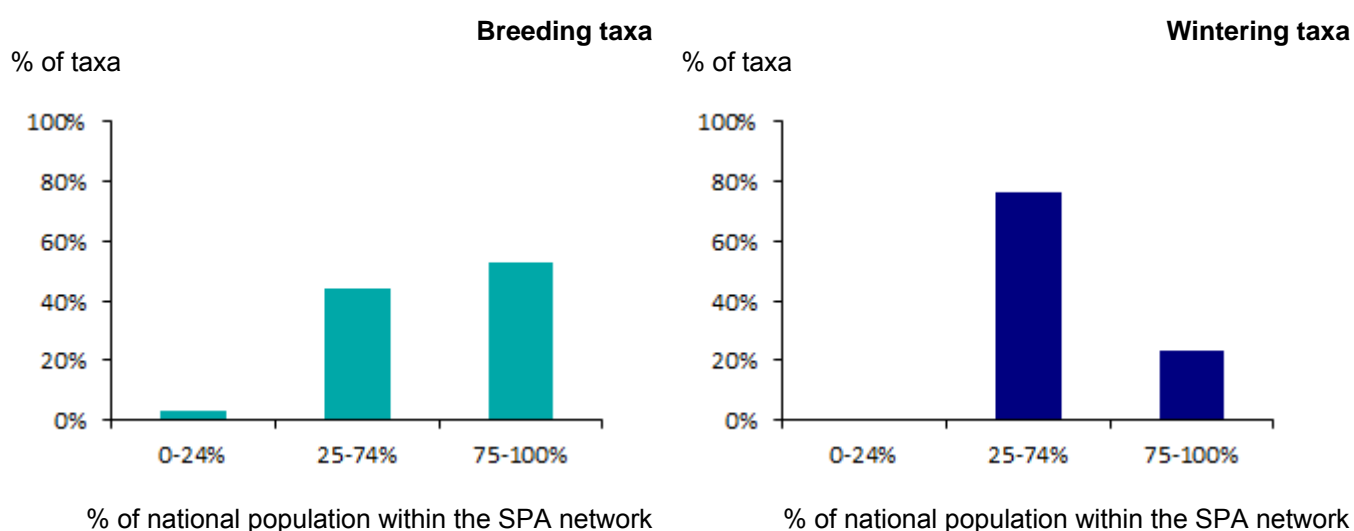
6. SPA coverage and conservation measures

Note: The figures under section 6 cover only taxa listed in Annex I, plus a selection of key migratory taxa for which SPAs have been classified nationally, as identified in the species checklist.

6.1 Coverage of SPA trigger species populations by SPA network

This section provides a summary of the proportions of national populations of SPA trigger taxa occurring within the national SPA network. These graphs (separate graphs for wintering and breeding taxa) show the percentages of reported SPA trigger taxa in three classes based on their coverage by SPAs.

The geometric mean is used if Member States have reported minimum and maximum values. The table below shows the figures on which the calculations are based.

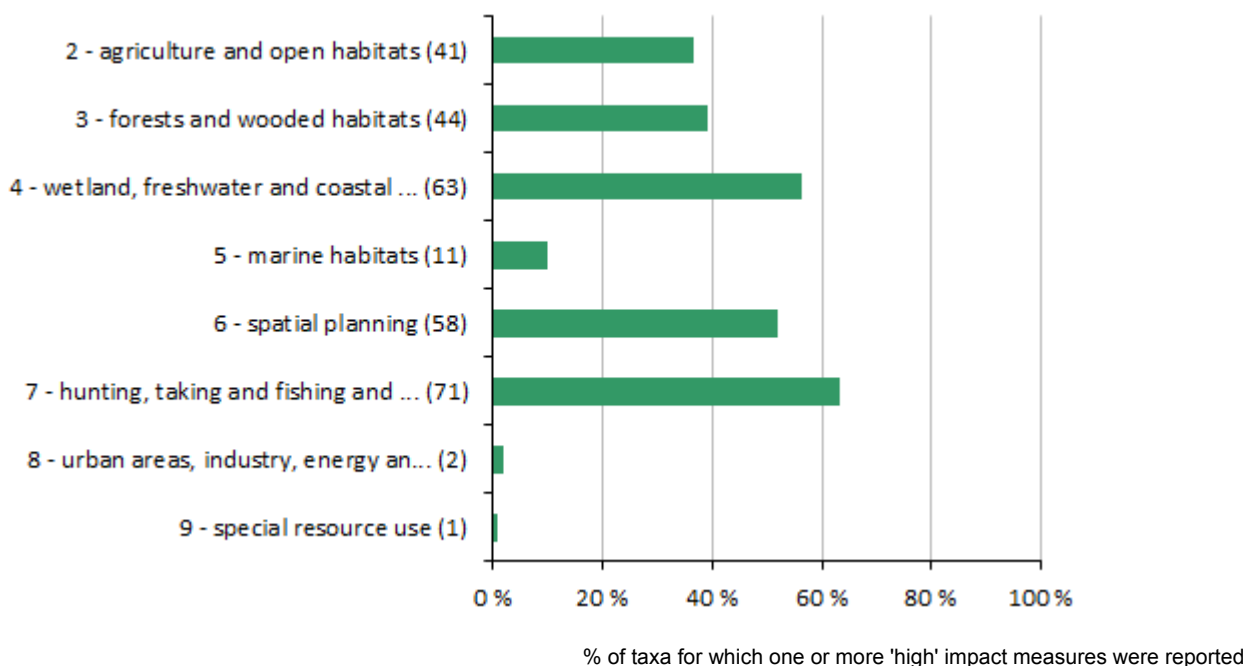


This table shows the number of reported SPA trigger taxa in three classes based on their coverage by SPA sites.

Taxa	Number of taxa				Total
	0-24%	25-74%	75-100%	unknown or not relevant	
Breeding taxa	2	31	37	21	91
Wintering taxa		13	4		17

6.2 Main conservation measures

This section provides information on the relative importance of conservation measures at level 1 implemented during the reporting period for SPA trigger taxa. The graph shows the percentages of taxa for which one or more 'high' importance conservation measure was implemented.



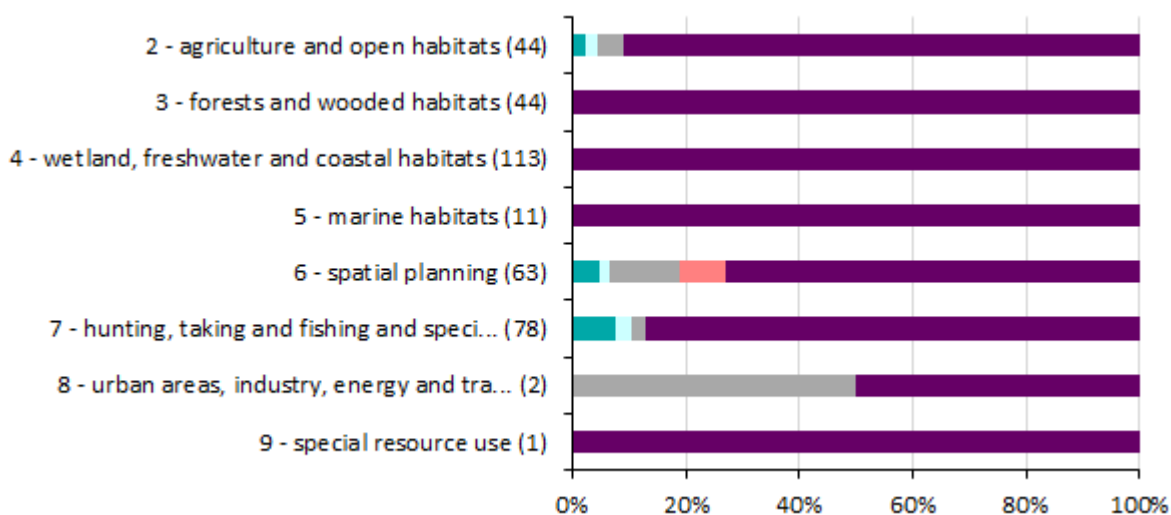
Note: Numbers in brackets correspond to the numbers of reports where measure 1, 2, etc. is noted as being of high importance. Measures not reported are omitted.

Total number of assessments considered in the calculation: **112**

Number of assessments with no high ranking conservation measures or no conservation measures at all reported: **20**

6.3 Impact of conservation measures

This section provides information on effects of implemented conservation measures for each level 1 measure category. The figure shows, for each level 1 measure category, the frequency of reported effects. The table below shows the figures on which the calculations are based (full names of the measures are shown in the table).



% of bird taxa for which a particular effect of a 'high' impact measure was reported

■ maintain ■ enhance ■ longterm ■ no effect ■ unknown or not evaluated

Note: The numbers in brackets correspond to the total number of reported effects for all 'high' importance measures.

Measure	Number of reports				
	maintain	enhance	longterm	no effect	unknown or not evaluated
2 - Measures related to agriculture and open habitats	1	1	2		40
3 - Measures related to forests and wooded habitats					44
4 - Measures related to wetland, freshwater and coastal habitats					113
5 - Measures related to marine habitats					11
6 - Measures related to spatial planning	3	1	8	5	46
7 - Measures related to hunting, taking and fishing and species management	6	2	2		68
8 - Measures related to urban areas, industry, energy and transport			1		1
9 - Measures related to special resource use					1

The following categories were used by the Member States to show effects of implemented conservation measures:

- Maintain** – when the conservation measure is required to maintain the population size on the present level and/or to prevent any declining trend.
- Enhance** – when the conservation measure is required to increase the population size from a currently low level and/or to prevent a further declining trend – alone or in conjunction with other measures.
- Long-term** – measure without short-term effect – one reporting cycle or less – but long-term positive effect in terms of increase of population size and/or turning a declining trend is expected.
- No effect** – measure without effect or that needs adaptation and that is not delivering any conservation benefit; measure failed in achieving its objectives or had adverse effects.
- Unknown effect**.
- Not evaluated** - if the effect of the measure has not been evaluated.

7. Data quality and completeness

7.1 Mandatory information missing or reported as unknown (%)

The aim of this section is to provide an overview of the data gaps in the report; most of these gaps are due to insufficient knowledge. This section does not refer to potential errors or technical problems in the Member State's report and concentrates on what is relevant for evaluating data completeness.

The tables give the percentages of bird taxa with unknown or missing information for components of bird status.

Note: The statistics on missing and unknown information may also include missing and unknown information for recent coloniser, species which are on verge of extinction or species with marginal population in the national territory for which certain fields in the reporting format may not be relevant and therefore corresponding information was not reported.

7.1 a) Mandatory information missing (%)

Population (breeding)	Size	0
	Trend (short)	7
	Trend (long)	20
Population (winter)	Size	0
	Trend (short)	0
	Trend (long)	0
Range (breeding)	Area	0
	Trend (short)	0.4
	Trend (long)	3
Pressures & threats		0
SPA network	Coverage	0
	Measures	0
Maps		0.4

7.1. b) Mandatory information reported as unknown (%)

Population (breeding)	Size	0.8
	Trend (short)	33
	Trend (long)	21
Population (winter)	Size	0
	Trend (short)	0
	Trend (long)	0
Range (breeding)	Area	0
	Trend (short)	3
	Trend (long)	4
Pressures & threats		0
SPA network	Coverage	21
	Measures	0
Maps		0

7.2 Data quality reported for key population and range parameters (%)

This section presents statistics on the data quality reported by Member States for key parameters of bird status.

Data quality	Breeding population			Breeding range			Wintering population		
	Size	Trend (short)	Trend (long)	Area	Trend (short)	Trend (long)	Size	Trend (short)	Trend (long)
Good (%)	9	4	3	19	1	0	94	91	91
Moderate (%)	22	47	22	81	97	95	6	9	6
Poor (%)	70	50	73	0	1	1	0	0	3
No data (%)	0	0	2	0	0	4	0	0	0

Source of information:

[Link to the national general report on CDR](#)

[Link to the national report for birds on CDR](#)

8. Bird species/subspecific populations reported

This section provides the list of bird taxa reported by the Member State, and the population size and short-term population trend direction ('+' increasing, '-' decreasing, '0' stable, 'F' fluctuating, 'x' unknown) for breeding and wintering taxa (the order of species follows the alphabetical order). For SPA trigger taxa occurring on passage an indication of presence or the size of the population is also provided.

For breeding taxa, population size is reported as number of breeding pairs, with just a few exceptions (which are indicated in the table), whereas population sizes for all wintering and passage taxa are in individuals.

Taxa listed on Annex I of the Directive are identified with a 'Y' in the 'Annex I' column. If the Member State reported on non-native taxa (other than for the three taxa listed in Annex II of the Birds Directive) the summary on these taxa is given in a separate table.

Code	Species/subspecific population	Annex I	Breeding	Wintering	Passage
A400	<i>Accipiter gentilis arrigonii</i>	Y	40-65 (x)		
A619	<i>Accipiter gentilis gentilis</i>	N	800-1750 (+)		
A633	<i>Accipiter nisus nisus</i>	N	2000-4000 (x)		
A298	<i>Acrocephalus arundinaceus</i>	N	20000-40000 (-)		
A293	<i>Acrocephalus melanopogon</i>	Y	650-830 (-)		
A296	<i>Acrocephalus palustris</i>	N	10000-30000 (-)		
A295	<i>Acrocephalus schoenobaenus</i>	N	3-5 (-)		
A297	<i>Acrocephalus scirpaceus</i>	N	30000-60000 (-)		
A168	<i>Actitis hypoleucos</i>	N	500-1000 (x)		
A324	<i>Aegithalos caudatus</i>	N	500000-1000000 (+)		
A223	<i>Aegolius funereus</i>	Y	1500-3500 (x)		
A247	<i>Alauda arvensis</i>	N	350000-500000 (-)		
A229	<i>Alcedo atthis</i>	Y	6000-16000 (x)		
A111	<i>Alectoris barbara</i>	Y	5000-10000 (-)		
A465	<i>Alectoris graeca graeca</i>	Y ^a	(-)		
A412	<i>Alectoris graeca saxatilis</i>	Y ^a	(-)		
A413	<i>Alectoris graeca whitakeri</i>	Y ^a	1500 (-)		
A110	<i>Alectoris rufa</i>	N	1500-2000 (x)		
A054	<i>Anas acuta</i>	N		8295-13698 (F)	
A056	<i>Anas clypeata</i>	N	150-200 (x)	17650-27252 (-)	
A704	<i>Anas crecca crecca</i>	N	20-50 (x)	132404-172520 (+)	
A050	<i>Anas penelope</i>	N		106885-127726 (0)	
A705	<i>Anas platyrhynchos platyrhynchos</i>	N	10000-20000 (-)	235953-245026 (+)	
A055	<i>Anas querquedula</i> [Western Siberia & Europe/West Africa]	N	350-500 (x)		
A703	<i>Anas strepera strepera</i>	N	50-100 (x)	8069-10409 (+)	
A394	<i>Anser albifrons albifrons</i>	N		1018-2623 (+)	
A043	<i>Anser anser</i>	N	280-350 (+)	10928-15577 (+)	
A702	<i>Anser fabalis rossicus</i> [West & Central Siberia/NE & SW Europe]	N		8-30 (-)	
A255	<i>Anthus campestris</i>	Y	15000-40000 (0)		
A259	<i>Anthus spinoletta</i>	N	70000-150000 (0)		
A256	<i>Anthus trivialis</i>	N	100000-200000 (0)		
A226	<i>Apus apus</i>	N	500000-1000000 (0)		
A227	<i>Apus pallidus</i>	N	7000-14000 (+)		

Code	Species/subspecific population	Annex I	Breeding	Wintering	Passage
A091	<i>Aquila chrysaetos</i>	Y	492-561 (0)		
A707	<i>Aquila fasciatus</i>	Y ^b	25-30 (x)		
A699	<i>Ardea cinerea cinerea</i>	N	10500-11000 (-)		
A634-A	<i>Ardea purpurea purpurea</i> [West Europe & West Mediterranean/West Africa]	Y ^a	2000-2300 (x)		
A635	<i>Ardeola ralloides ralloides</i>	Y ^a	500-600 (-)		
A221	<i>Asio otus</i>	N	6000-12000 (x)		
A218	<i>Athene noctua</i>	N	40000-70000 (-)		
A059	<i>Aythya ferina</i>	N	150-200 (-)	25488-37173 (+)	
A061	<i>Aythya fuligula</i>	N	50-70 (+)	7640-8064 (+)	
A062	<i>Aythya marila</i>	N		24-230 (-)	
A060-B	<i>Aythya nyroca</i> [Eastern Europe/E Mediterranean & Sahelian Africa]	Y	62-89 (+)	369-506 (+)	
A104	<i>Bonasa bonasia</i>	Y	5000-6000 (x)		
A688-B	<i>Botaurus stellaris stellaris</i> [C & E Europe, Black Sea & E Mediterranean (bre)]	Y ^a	75-95 cmales (x)		
A215	<i>Bubo bubo</i>	Y	250-340 (x)		
A696	<i>Bubulcus ibis ibis</i>	N	4500-5000 (+)		
A067	<i>Bucephala clangula</i>	N		1117-1784 (F)	
A133	<i>Burhinus oedicephalus</i>	Y	3600-6600 (-)		
A087	<i>Buteo buteo</i>	N	4000-8000 (+)		
A243	<i>Calandrella brachydactyla</i>	Y	15000-30000 (-)		
A144	<i>Calidris alba</i>	N		401-563 (+)	
A149	<i>Calidris alpina</i> [all non-breeding populations]	N		64925-79211 (+)	
A145	<i>Calidris minuta</i>	N		1881-2147 (0)	
A010	<i>Calonectris diomedea</i>	Y	13344-21873 (0)		
A224	<i>Caprimulgus europaeus</i>	Y	10000-30000 cmales (x)		
A366	<i>Carduelis cannabina</i>	N	300000-600000 (-)		
A364	<i>Carduelis carduelis</i>	N	1000000-1800000 (-)		
A745	<i>Carduelis chloris</i>	N	400000-800000 (-)		
A623	<i>Carduelis citrinella</i>	N	2500-6500 (x)		
A669	<i>Carduelis corsicana</i>	N	3000-5500 (x)		
A368	<i>Carduelis flammea</i>	N	20000-50000 (x)		
A365	<i>Carduelis spinus</i>	N	500-1500 (F)		
A698	<i>Casmerodius albus albus</i> [W, C & SE Europe/Black Sea & Mediterranean]	Y ^{ba}	85-100 (+)	6409-7110 (+)	
A637	<i>Certhia brachydactyla</i> all others	N	100000-500000 (+)		
A334	<i>Certhia familiaris</i>	N	30000-100000 (x)		
A288	<i>Cettia cetti</i>	N	300000-600000 (0)		
A682-A	<i>Charadrius alexandrinus alexandrinus</i> [West Europe & West Mediterranean/West Africa]	Y ^a	1500-1850 (-)		
A726	<i>Charadrius dubius curonicus</i> [Europe & North-west Africa/West Africa]	N	2300-4000 (x)		
A734	<i>Chlidonias hybrida</i>	Y	570-590 (x)		
A198	<i>Chlidonias leucopterus</i>	N	4 (F)		
A197	<i>Chlidonias niger</i>	Y	120 (x)		
A667-A	<i>Ciconia ciconia ciconia</i> [W Europe & North-west Africa/Sub-Saharan Africa]	Y ^a	150-200 (+)		
A030-A	<i>Ciconia nigra</i> [South-west Europe/West Africa]	Y	10 (+)		
A264	<i>Cinclus cinclus</i>	N	4000-8000 (0)		
A080	<i>Circaetus gallicus</i>	Y	350-560 (x)		P

Code	Species/subspecific population	Annex I	Breeding	Wintering	Passage
A081	<i>Circus aeruginosus</i>	Y	214-287 bfemales (x)	790-1029 (0)	P
A084	<i>Circus pygargus</i>	Y	260-380 bfemales (x)		
A289	<i>Cisticola juncidis</i>	N	100000-300000 (+)		
A211	<i>Clamator glandarius</i>	N	15-25 (+)		
A373	<i>Coccothraustes coccothraustes</i>	N	5000-15000 (x)		
A206	<i>Columba livia</i> [livia and domestica]	N	3000-7000 (x)		
A207	<i>Columba oenas</i>	N	200-500 (x)		
A687	<i>Columba palumbus palumbus</i>	N	40000-80000 (+)		
A231	<i>Coracias garrulus</i>	Y	300-500 (x)		
A350	<i>Corvus corax</i>	N	3000-6000 (0)		
A742	<i>Corvus corone cornix</i>	N	400000-800000 (+)		
A743	<i>Corvus corone corone</i>	N	10000-30000 (0)		
A347	<i>Corvus monedula</i>	N	50000-100000 (+)		
A113	<i>Coturnix coturnix</i>	N	15000-30000 cmales (+)		
A122	<i>Crex crex</i> [Europe & Western Asia/Sub-Saharan Africa]	Y	160-200 cmales (-)		
A212	<i>Cuculus canorus</i>	N	50000-100000 cmales (-)		
A036	<i>Cygnus olor</i>	N	300-500 (+)		
A738	<i>Delichon urbicum</i>	N	500000-1000000 (-)		
A239	<i>Dendrocopos leucotos</i>	Y	250-350 (0)		
A658	<i>Dendrocopos major</i> all others	N	70000-150000 (+)		
A238	<i>Dendrocopos medius</i>	Y	400-600 (x)		
A240	<i>Dendrocopos minor</i>	N	3000-6000 (x)		
A236	<i>Dryocopus martius</i>	Y	1300-3700 (x)		
A697	<i>Egretta garzetta garzetta</i>	Y ^a	10000-11000 (-)		
A378	<i>Emberiza cia</i>	N	22000-90000 (0)		
A377	<i>Emberiza cirius</i>	N	300000-800000 (+)		
A376	<i>Emberiza citrinella</i>	N	20000-50000 (0)		
A379	<i>Emberiza hortulana</i>	Y	4000-16000 (x)		
A382	<i>Emberiza melanocephala</i>	N	4000-16000 (x)		
A381	<i>Emberiza schoeniclus</i>	N	50000-100000 (-)		
A269	<i>Erithacus rubecula</i>	N	1000000-3000000 (+)		
A727	<i>Eudromias morinellus</i> [Europe/North-west Africa]	Y	0-5 males (x)		
A101	<i>Falco biarmicus</i>	Y	140-172 (x)		
A100	<i>Falco eleonorae</i>	Y	638-704 (x)		
A095	<i>Falco naumanni</i>	Y	5500-6700 (+)		
A710	<i>Falco peregrinus</i> all others	Y ^a	1100-1400 (+)		
A099	<i>Falco subbuteo</i>	N	500-1000 (+)		
A096	<i>Falco tinnunculus</i>	N	8000-12000 (+)		
A097	<i>Falco vespertinus</i>	Y	50-70 (F)		
A321	<i>Ficedula albicollis</i>	Y	1000-3000 (x)		
A657	<i>Fringilla coelebs</i> all others	N	1000000-2000000 (+)		
A723	<i>Fulica atra atra</i>	N	8000-12000 (x)	239506-277872 (0)	
A244	<i>Galerida cristata</i>	N	200000-400000 (0)		
A721	<i>Gallinula chloropus chloropus</i> [Europe & North Africa]	N	100000-150000 (x)		
A342	<i>Garrulus glandarius</i>	N	300000-600000 (+)		

Code	Species/subspecific population	Annex I	Breeding	Wintering	Passage
A689	<i>Gavia arctica arctica</i> [Northern Europe & Western Siberia/Europe]	Y ^a		235-420 (+)	
A625-A	<i>Glareola pratincola pratincola</i> [Western Europe & NW Africa/West Africa]	Y ^a	107-132 (x)		
A217	<i>Glaucidium passerinum</i>	Y	700-1400 (x)		
A076	<i>Gypaetus barbatus</i>	Y	6-7 (+)		
A078	<i>Gyps fulvus</i>	Y	82-87 (+)		
A130	<i>Haematopus ostralegus</i>	N	260-330 (+)		
A131	<i>Himantopus himantopus</i>	Y	3000-4000 (x)		
A300	<i>Hippolais polyglotta</i>	N	50000-150000 (+)		
A252	<i>Hirundo daurica</i>	N	15-40 (F)		
A737	<i>Hirundo rupestris</i>	N	30000-50000 (0)		
A251	<i>Hirundo rustica</i>	N	500000-1000000 (0)		
A695	<i>Hydrobates pelagicus melitensis</i>	Y ^a	3700-4500 (0)		
A617-A	<i>Ixobrychus minutus minutus</i> [W Europe, NW Africa/Sub-Saharan Africa]	Y ^a	1300-2300 (-)		
A233	<i>Jynx torquilla</i>	N	50000-100000 (-)		
A713	<i>Lagopus muta helvetica</i>	Y	5000-8000 (-)		
A338	<i>Lanius collurio</i>	Y	20000-60000 (-)		
A653	<i>Lanius excubitor excubitor</i>	N	0-2 (x)		
A339	<i>Lanius minor</i>	Y	1000-2000 (-)		
A341	<i>Lanius senator</i>	N	4000 (-)		
A181	<i>Larus audouinii</i> [Mediterranean/N & W coasts of Africa]	Y	1153-1286 (+)		
A180	<i>Larus genei</i>	Y	3000-5000 (+)		
A176	<i>Larus melanocephalus</i>	Y	2500-4000 (+)		
A604	<i>Larus michahellis</i>	N	45000-60000 (0)		
A179	<i>Larus ridibundus</i>	N	500-1000 (x)		
A614-A	<i>Limosa limosa limosa</i> [Western Europe/NW & West Africa]	N	15 (+)		
A292	<i>Locustella luscinioides</i>	N	200-400 (-)		
A369	<i>Loxia curvirostra</i>	N	50000-70000 (x)		
A246	<i>Lullula arborea</i>	Y	20000-40000 (+)		
A271	<i>Luscinia megarhynchos</i>	N	100000-150000 (0)		
A057-A	<i>Marmaronetta angustirostris</i> [West Mediterranean/West Medit. & West Africa]	Y	2-3 (0)		
A242	<i>Melanocorypha calandra</i>	Y	6000-12000 (-)		
A654-B	<i>Mergus merganser merganser</i> [other populations]	N	22-29 (+)		
A069	<i>Mergus serrator</i>	N		993-1351 (-)	
A230	<i>Merops apiaster</i>	N	7000-13000 (+)		
A746	<i>Miliaria calandra</i>	N	200000-600000 (+)		
A073	<i>Milvus migrans</i>	Y	860-1153 (x)		P
A074	<i>Milvus milvus</i>	Y	314-426 (+)	1439-1531 (+)	
A280	<i>Monticola saxatilis</i>	N	5000-10000 (-)		
A281	<i>Monticola solitarius</i>	N	10000-20000 (x)		
A358	<i>Montifringilla nivalis</i>	N	4000-8000 (x)		
A262	<i>Motacilla alba</i>	N	150000-300000 (0)		
A261	<i>Motacilla cinerea</i>	N	40000-80000 (0)		
A260	<i>Motacilla flava</i>	N	100000-200000 (-)		
A319	<i>Muscicapa striata</i>	N	200000-400000 (0)		
A077	<i>Neophron percnopterus</i>	Y	8-10 (-)		

Code	Species/subspecific population	Annex I	Breeding	Wintering	Passage
A058-A	<i>Netta rufina</i> [South-west & Central Europe/West Mediterranean]	N	40-60 (F)	171-329 (F)	
A344	<i>Nucifraga caryocatactes</i>	N	8000-20000 (0)		
A768	<i>Numenius arquata arquata</i> [Europe/Europe, North & West Africa]	N		6207-7218 (+)	
A610-B	<i>Nycticorax nycticorax nycticorax</i> [W Europe, NW Africa (bre)]	Y ^a	6300-6600 (-)		
A278	<i>Oenanthe hispanica</i>	N	1000-2000 (-)		
A277	<i>Oenanthe oenanthe</i>	N	100000-200000 (+)		
A337	<i>Oriolus oriolus</i>	N	40000-100000 (+)		
A214	<i>Otus scops</i>	N	5000-11000 (x)		
A323	<i>Panurus biarmicus</i>	N	550-850 (-)		
A656	<i>Parus ater</i> all others	N	1000000-2000000 (0)		
A329	<i>Parus caeruleus</i>	N	500000-1000000 (+)		
A327	<i>Parus cristatus</i>	N	20000-40000 (0)		
A330	<i>Parus major</i>	N	1000000-2000000 (+)		
A326	<i>Parus montanus</i>	N	30000-50000 (0)		
A325	<i>Parus palustris</i>	N	100000-400000 (+)		
A620	<i>Passer domesticus</i>	N	10000-30000 (x)		
A771	<i>Passer hispaniolensis</i> all others	N	400000-800000 (x)		
A744	<i>Passer hispaniolensis italiae</i>	N	2000000-3000000 (-)		
A356	<i>Passer montanus</i>	N	600000-1000000 (-)		
A644	<i>Perdix perdix</i> all others	N	2000-4000 (x)		
A414	<i>Perdix perdix italica</i>	Y	0 (x)		
A072	<i>Pernis apivorus</i>	Y	600-1000 (x)		P
A357	<i>Petronia petronia</i>	N	5000-20000 (x)		
A392	<i>Phalacrocorax aristotelis desmarestii</i>	Y	1500-2100 (-)		
A391	<i>Phalacrocorax carbo sinensis</i>	N	3050-3220 (+)		
A393	<i>Phalacrocorax pygmeus</i> [Black Sea & Mediterranean]	Y	1000-1500 (+)	12670 (+)	
A115-X	<i>Phasianus colchicus</i>	N	1000-100000 (x)		
A663-A	<i>Phoenicopiterus roseus</i> [West Mediterranean]	N	4152 (+)	27535-31413 (+)	
A273	<i>Phoenicurus ochruros</i>	N	200000-400000 (+)		
A274	<i>Phoenicurus phoenicurus</i>	N	100000-300000 (+)		
A313	<i>Phylloscopus bonelli</i>	N	40000-120000 (+)		
A315	<i>Phylloscopus collybita</i>	N	500000-1000000 (0)		
A314	<i>Phylloscopus sibilatrix</i>	N	10000-40000 (x)		
A343	<i>Pica pica</i>	N	500000-1000000 (+)		
A241	<i>Picoides tridactylus</i>	Y	100-250 (0)		
A234	<i>Picus canus</i>	Y	700-1500 (0)		
A235	<i>Picus viridis</i>	N	60000-120000 (+)		
A607-B	<i>Platalea leucorodia leucorodia</i> [Cent. & SE Europe/Mediterranean & Tropical Africa]	Y ^a	190 (+)		
A700	<i>Plegadis falcinellus falcinellus</i> [Black Sea & Mediterranean/West Africa]	Y ^a	14-16 (x)		
A141	<i>Pluvialis squatarola</i> [W Siberia & Canada/W Europe & W Africa]	N		4823-6432 (+)	
A691	<i>Podiceps cristatus cristatus</i>	N	2315-3045 (-)	23546-27863 (+)	
A692	<i>Podiceps nigricollis nigricollis</i> [Europe/South & West Europe & North Africa]	N		7919-10527 (-)	
A722	<i>Porphyrio porphyrio porphyrio</i>	Y ^a	550-750 (+)		
A719	<i>Porzana parva parva</i> [Western Eurasia/Africa]	Y ^a	5-20 cmales (x)		

Code	Species/subspecific population	Annex I	Breeding	Wintering	Passage
A119	Porzana porzana [Europe/Africa]	Y	10-50 cmales (x)		
A267	Prunella collaris	N	10000-20000 (x)		
A266	Prunella modularis	N	100000-200000 (0)		
A464	Puffinus yelkouan	Y	12791-19774 (+)		
A345	Pyrrhocorax graculus	N	5000-15000 (x)		
A346	Pyrrhocorax pyrrhocorax	Y	1050-1500 (x)		
A372	Pyrrhula pyrrhula	N	30000-60000 (-)		
A718	Rallus aquaticus aquaticus [Europe & North Africa]	N	3000-6000 (x)		
A132-B	Recurvirostra avosetta [South-east Europe, Black Sea & Turkey (bre)]	Y	1873-1970 (x)	6346-7588 (+)	
A318	Regulus ignicapillus	N	300000-600000 (+)		
A317	Regulus regulus	N	300000-500000 (-)		
A336	Remiz pendulinus	N	8000-12000 (-)		
A249	Riparia riparia	N	6000-8000 (-)		
A275	Saxicola rubetra	N	10000-15000 (-)		
A276	Saxicola torquatus	N	300000-600000 (-)		
A155	Scolopax rusticola [Europe/South & West Europe & North Africa]	N	50-150 cmales (x)		
A361	Serinus serinus	N	1000000-1500000 (0)		
A332	Sitta europaea	N	50000-200000 (+)		
A063	Somateria mollissima	N	3-6 (0)	98-171 (F)	
A631-A	Sterna albifrons albifrons [Europe north of Mediterranean (bre)]	Y ^a	2000-3500 (x)		
A193	Sterna hirundo	Y	4000-5000 (x)		
A731-A	Sterna nilotica nilotica [Western Europe/West Africa]	Y ^a	543-551 (x)		
A191	Sterna sandvicensis	Y	798-821 (x)		
A209	Streptopelia decaocto	N	400000-600000 (+)		
A210	Streptopelia turtur	N	150000-300000 (x)		
A219	Strix aluco	N	30000-50000 (0)		
A220	Strix uralensis	Y	5-8 (x)		
A352	Sturnus unicolor	N	30000-50000 (x)		
A351	Sturnus vulgaris	N	800000-2000000 (+)		
A311	Sylvia atricapilla	N	2000000-5000000 (+)		
A310	Sylvia borin	N	30000-60000 (-)		
A770	Sylvia cantillans all others	N	50000-200000 (0)		
A647	Sylvia cantillans moltonii	N	50000-130000 (+)		
A309	Sylvia communis	N	50000-250000 (-)		
A303	Sylvia conspicillata	N	10000-20000 (x)		
A308	Sylvia curruca	N	10000-30000 (x)		
A306	Sylvia hortensis	N	200-500 (x)		
A305	Sylvia melanocephala	N	500000-1500000 (0)		
A307	Sylvia nisoria	Y	90-100 (-)		
A301	Sylvia sarda	Y	5000-10000 (x)		
A769	Sylvia undata all others	Y ^a	10000-30000 (x)		
A690	Tachybaptus ruficollis ruficollis [Europe & North-west Africa]	N	3000-4000 (x)		
A228	Tachymarptis melba	N	6000-12000 (0)		
A048	Tadorna tadorna	N	300 (+)	11575-20689 (+)	
A409	Tetrao tetrix tetrix	Y	20000-24000 cmales (x)		

Code	Species/subspecific population	Annex I	Breeding	Wintering	Passage
A659	Tetrao urogallus all others	Y ^a	1800-2500 cmales (-)		
A725-A	Tetrax tetrax tetrax [Mediterranean (sedentary)]	Y ^a	352 males (-)		
A333	Tichodroma muraria	N	2000-6000 (0)		
A162	Tringa totanus	N	1100-1200 (x)		
A676	Troglodytes troglodytes all others	N	1000000-2500000 (+)		
A283	Turdus merula	N	2000000-5000000 (+)		
A285	Turdus philomelos	N	100000-300000 (+)		
A284	Turdus pilaris	N	5000-10000 (-)		
A282	Turdus torquatus	N	10000-20000 (0)		
A287	Turdus viscivorus	N	50000-100000 (+)		
A213	Tyto alba	N	6000-13000 (-)		
A232	Upupa epops	N	20000-50000 (x)		
A142	Vanellus vanellus [Europe, W Asia/Europe, N Africa & SW Asia]	N	4800-6050 (x)		

Note: The abbreviation Y^a is used for taxa (typically subspecies) listed in the Annex I at higher taxonomical level. The code Y^b indicates that the Annex I contains a synonym of the name used in the checklist.

Non native taxa

Code	Species/subspecific population	Annex I	Breeding
A411-X	Alectoris chukar	N	50-100 (x)
A764-X	Amandava amandava	N	300-900 (+)
A752-X	Colinus virginianus	N	5000-8000 (x)
A747-X	Cygnus atratus	N	1-3 (0)
A754-X	Francolinus erckelii	N	1-5 (0)
A753-X	Francolinus francolinus asiae	N	1-50 (x)
A762-X	Leiothrix lutea	N	1500-2500 (+)
A761-X	Myiopsitta monachus	N	400-500 (+)
A763-X	Paradoxornis webbianus	N	1750-2500 (+)
A759-X	Porphyrio porphyrio poliocephalus	N	0-1 (-)
A760-X	Psittacula krameri	N	1000-5000 (+)
A766-X	Streptopelia senegalensis	N	65-73 (+)
A758-X	Threskiornis aethiopicus	N	100-120 (+)