

Implementation of WFD & MSFD and Swedish aquaculture

Malin Skog,
Aquaculture
coordinator

Some authorities responsible for aquaculture

- Permits, dispensations etc. for aquaculture:

County administration boards + municipalities

- Water environment (incl. aquaculture) and fisheries:

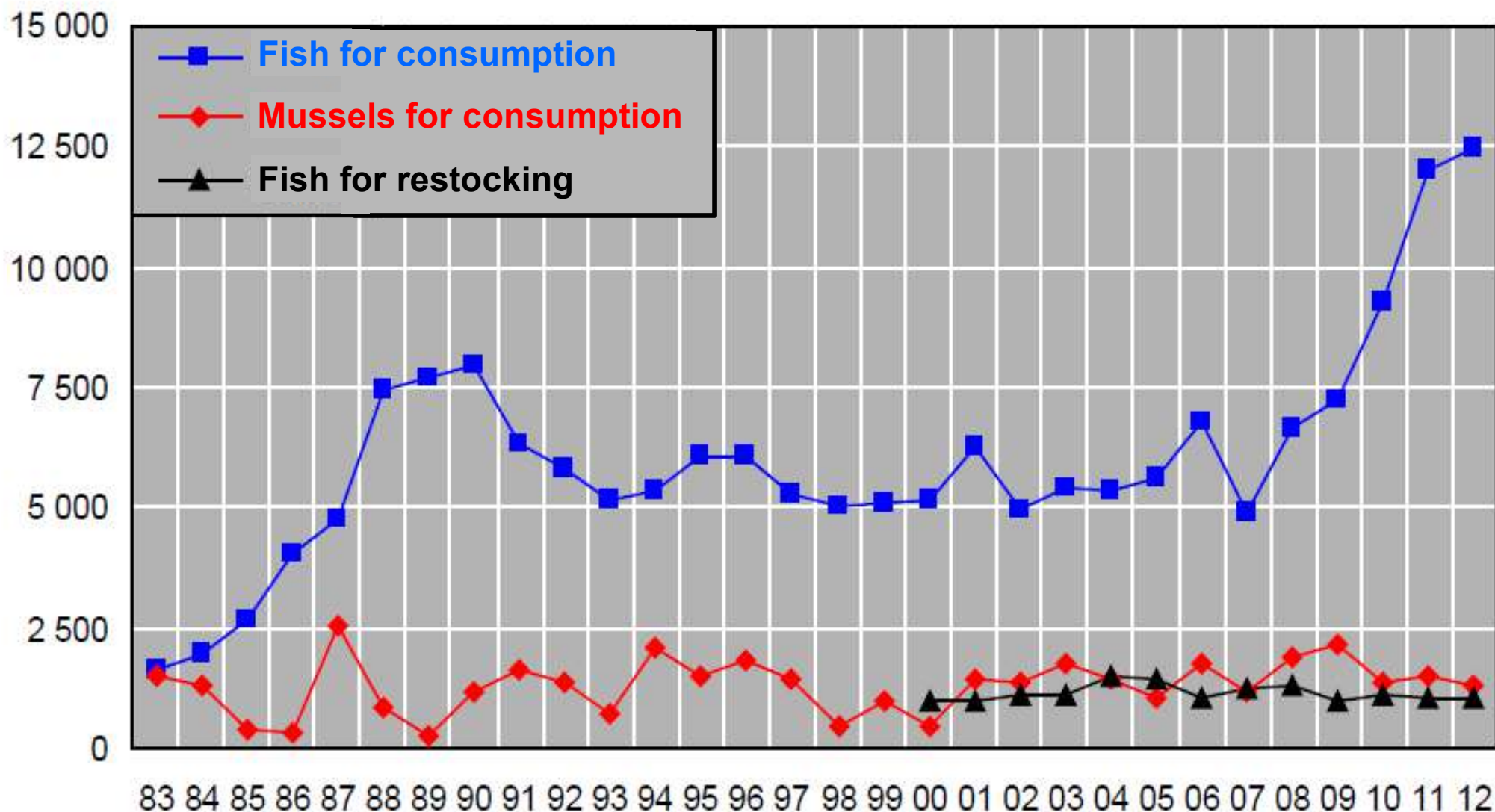
Swedish Agency for Marine and Water Management

- Promotion of aquaculture

Swedish Board of Agriculture

Swedish aquaculture

(production in tonnes/year)



Swedish aquaculture

(Fish for consumption)

- 84% rainbow trout
- 15% Arctic char
- 9 500 tonnes in freshwater
- 3 000 tonnes in marine/Baltic Sea
- Cage culture most common

Implementation of the WFD and MSFD

- 5 Swedish Water Authorities
- Swedish Agency for Marine and Water Management

Sweden: WFD River Basin Districts

5 Water authorities

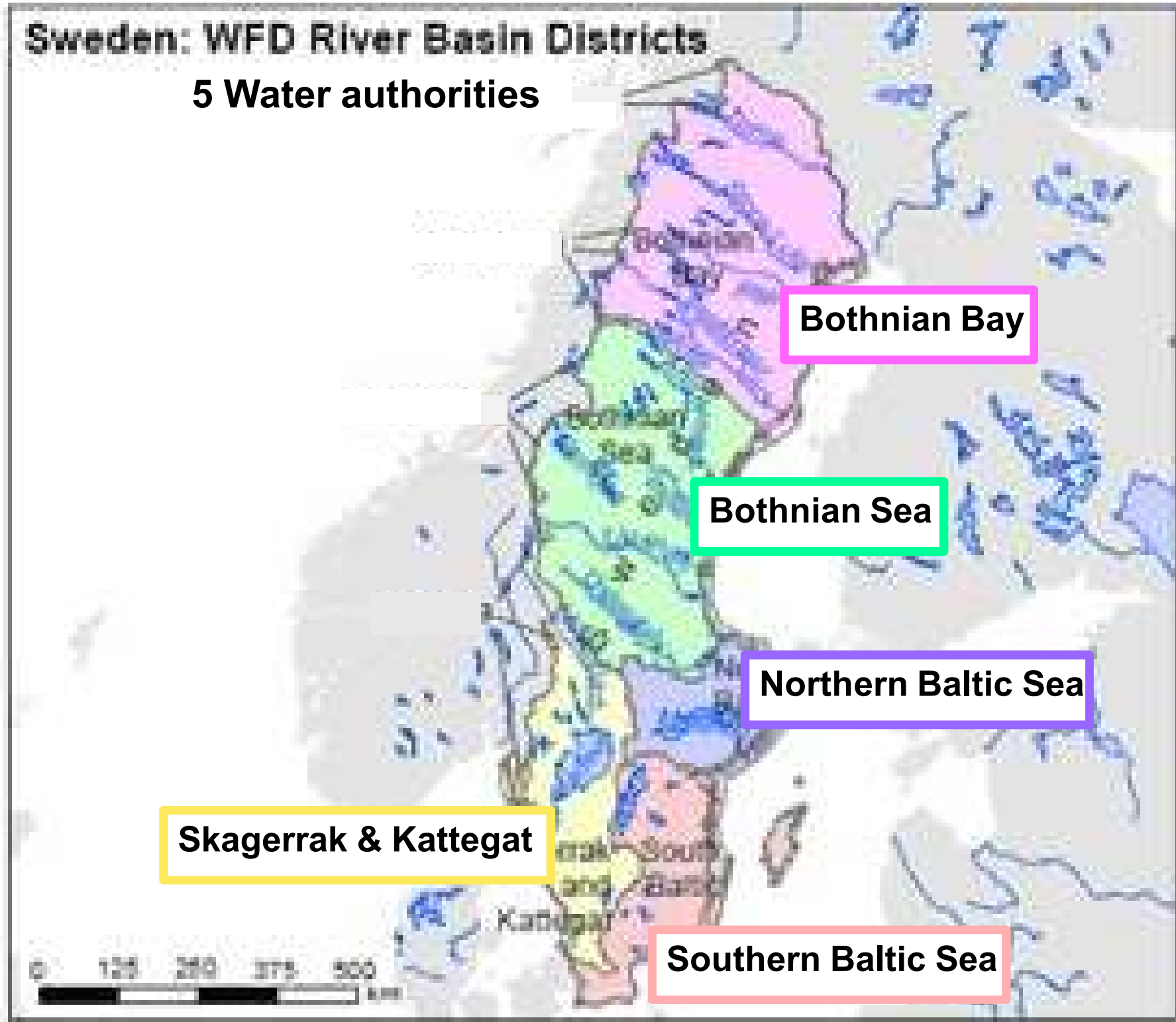
Bothnian Bay

Bothnian Sea

Northern Baltic Sea

Skagerrak & Kattegat

Southern Baltic Sea



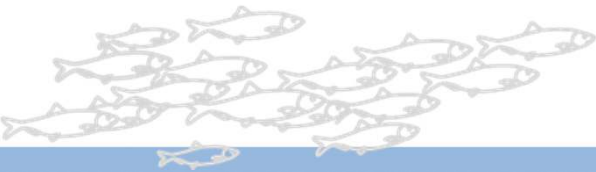
Implementation of the WFD and MSFD

- 5 Swedish Water Authorities
- Swedish Agency for Marine and Water Management
- Programs of measure for WFD & MSFD
- Valid during 2016-2021
- Aquaculture not considered separately

Swedish aquaculture

(Aquaculture vs WFD & MSFD)

- Nutrient surplus (fish culture)



Swedish aquaculture

(Aquaculture vs WFD & MSFD)

- Nutrient surplus (fish culture)
- Eutrophication in Baltic Sea + Skagerrak
- Good ecological status (WFD & MSFD)
- National objective: No eutrophication
- HELCOM – BSAP

Swedish aquaculture

(Aquaculture vs WFD & MSFD)

- Nutrient surplus (fish culture)
- Eutrophication in Baltic Sea + Skagerrak
- Good ecological status (WFD & MSFD)
- National objective: No eutrophication
- HELCOM – BSAP
- Extremely oligotrophic hydropower dams
- Land-based, recirculating systems
- Mussel culture = uptake of nutrients