

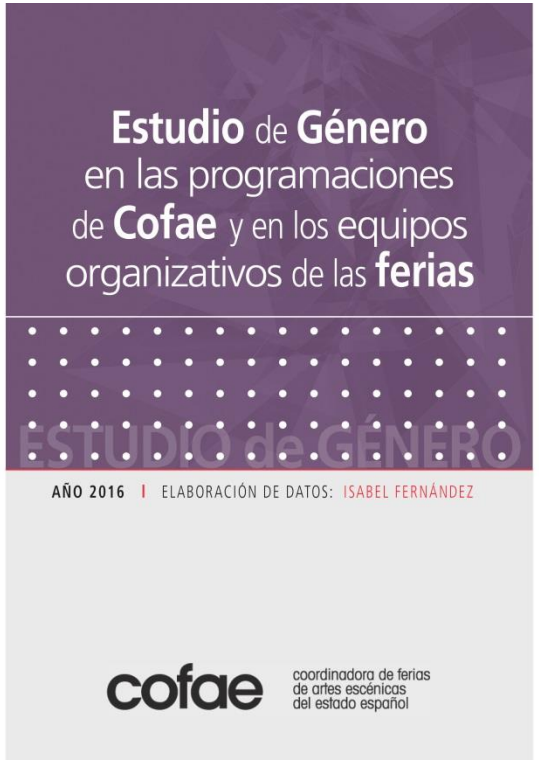
**Equal opportunities
in the live performance sector
in Spain**



Based on:



*Where are women?
By Classic & Modern*



*Gender study in COFAE's
programme & staff
By COFAE*



Association for gender equality
in culture (2009)



Association of Performing
Arts Market (2006)



Preliminary considerations:

- Different wording
- Different categories

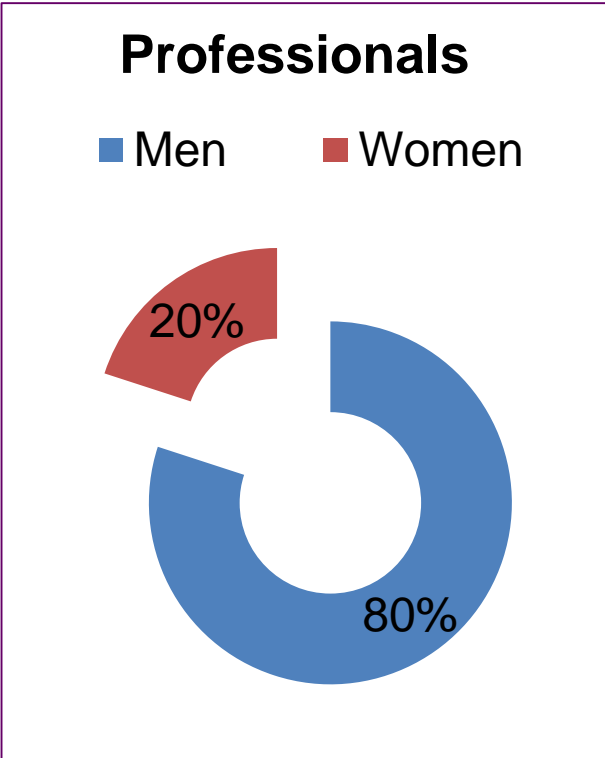


Analysis of the Programming

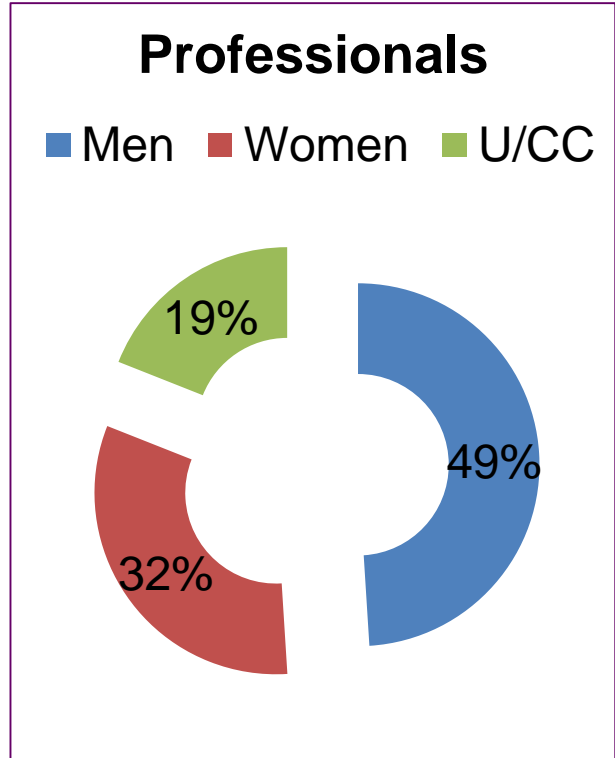
	Classic & Modern	COFAE
Season	2015-2016	2016
Venues	24 public theaters	12 performing arts market
Shows	547	403
Professionals	1.571	3.917



Analysis of the Programming



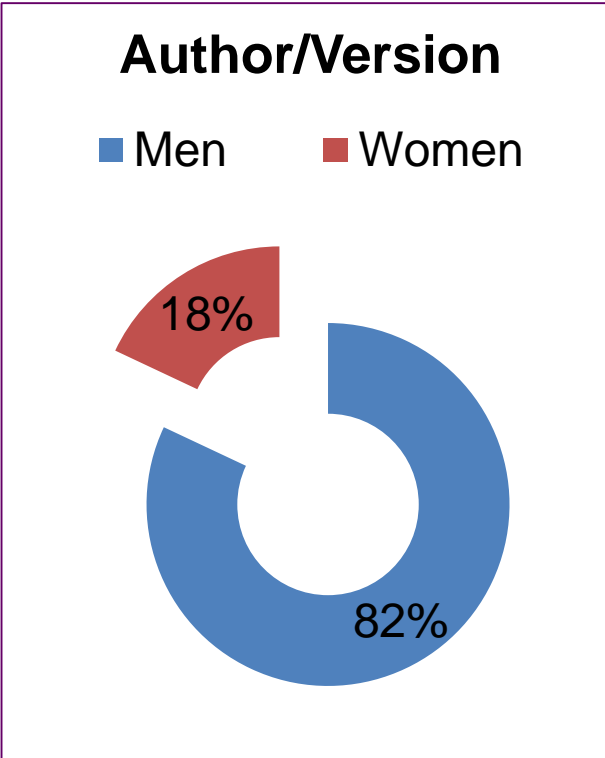
Classic & Modern



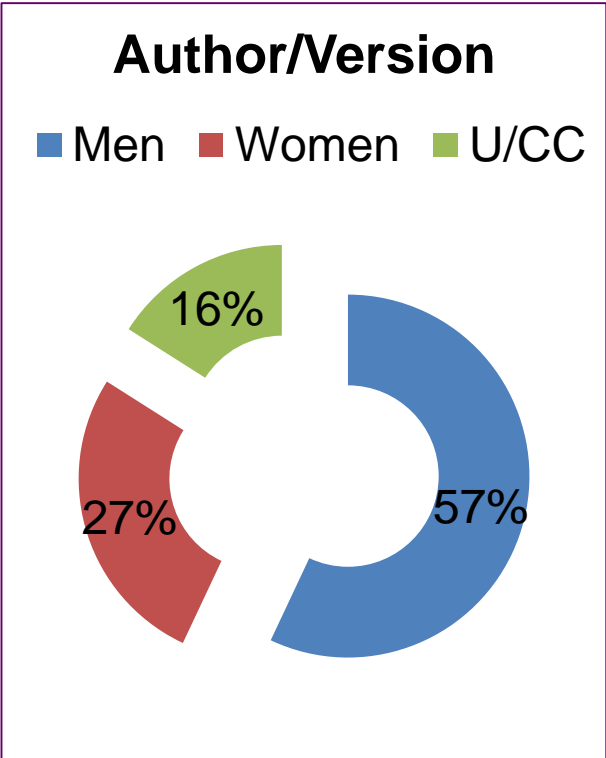
COFAE



Analysis of the Programming



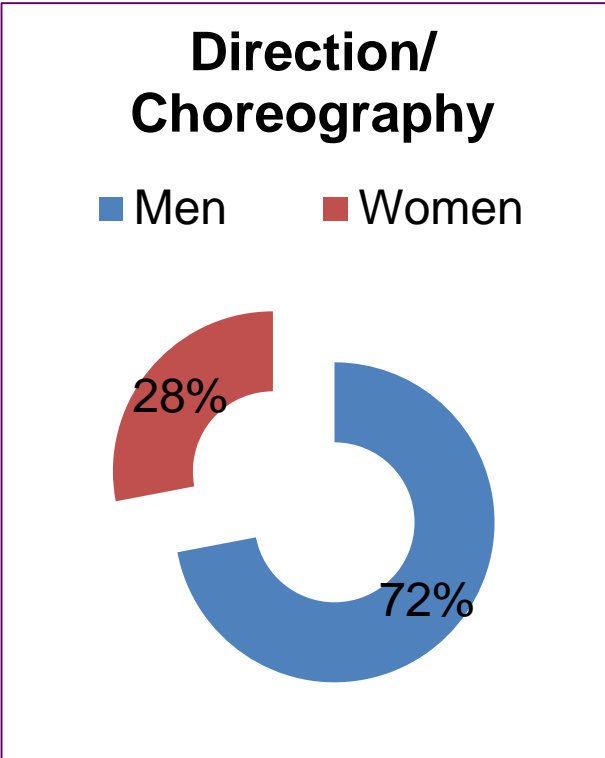
Classic & Modern



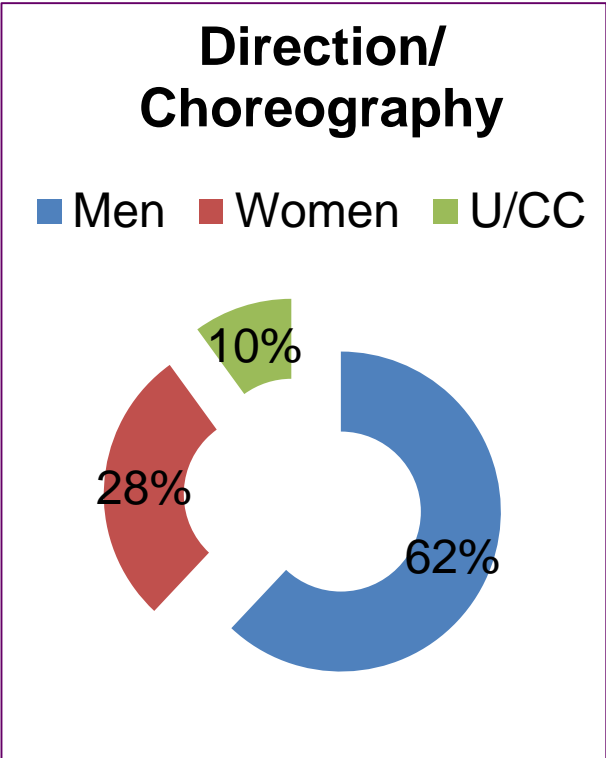
COFAE



Analysis of the Programming



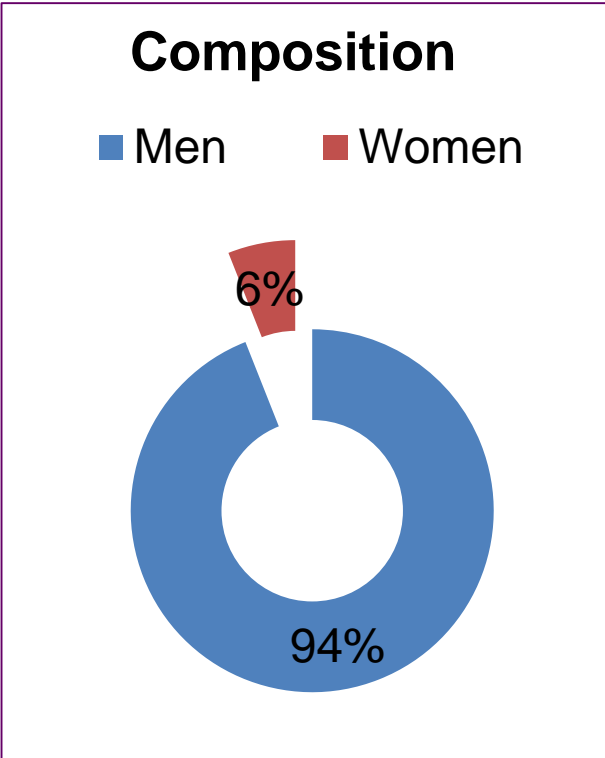
Classic & Modern



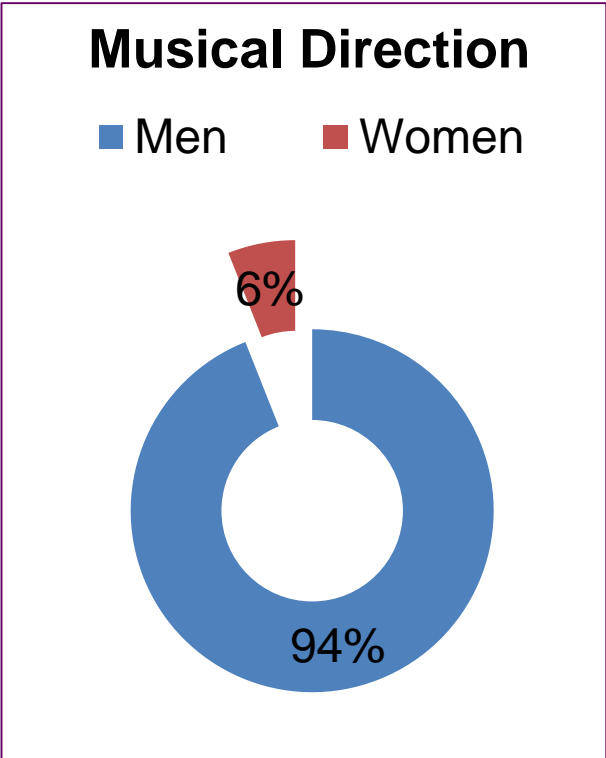
COFAE



Analysis of the Programming



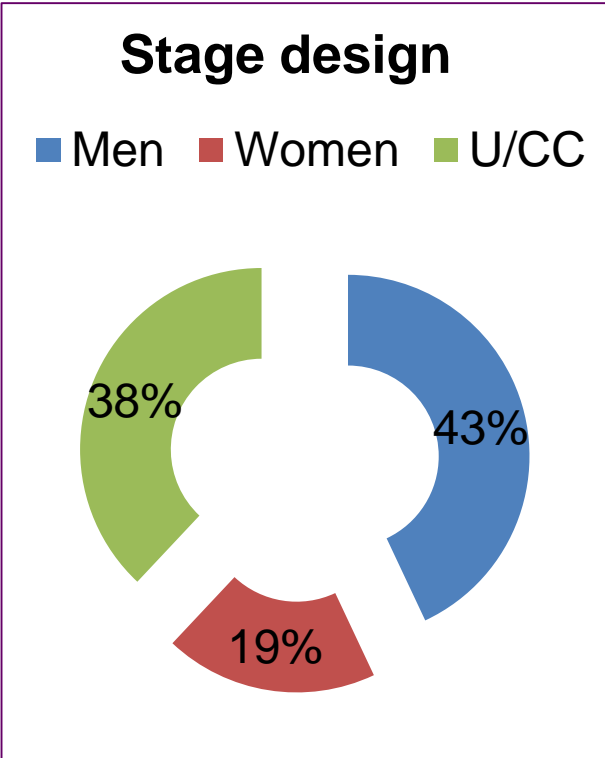
Classic & Modern



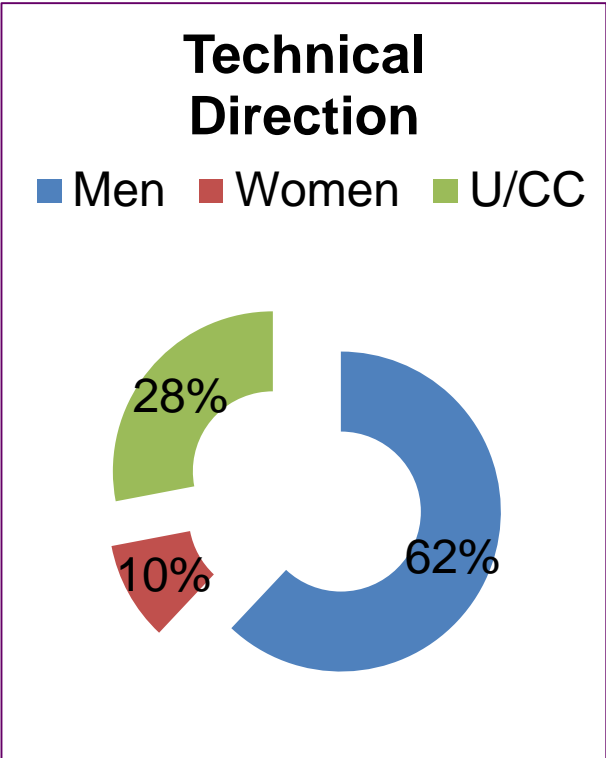
Classic & Modern



Analysis of the Programming



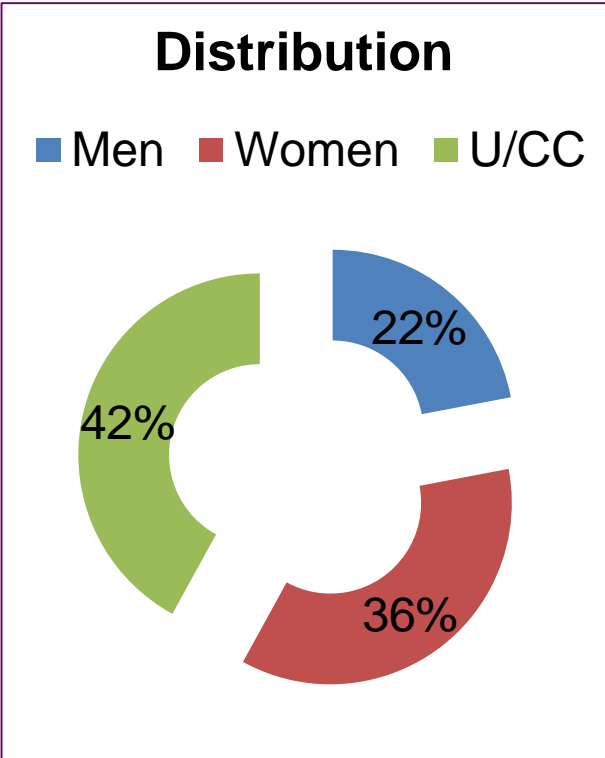
COFAE



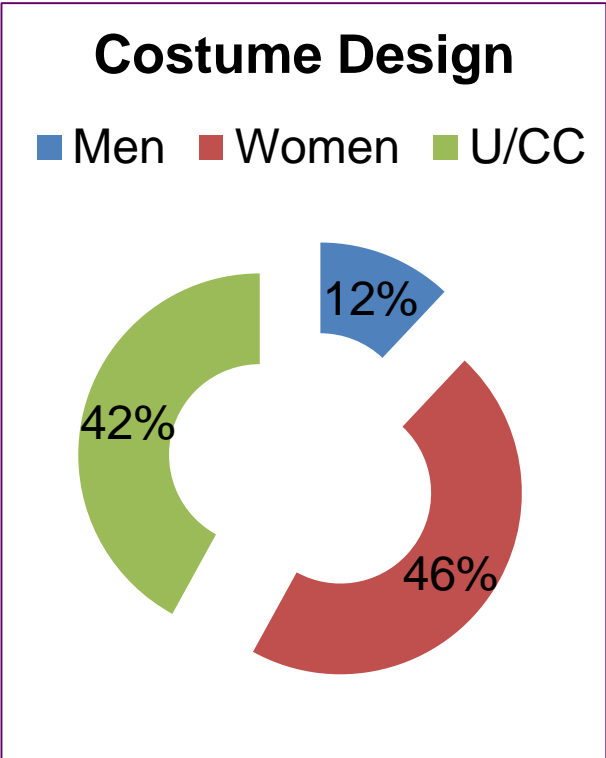
COFAE



Analysis of the Programming



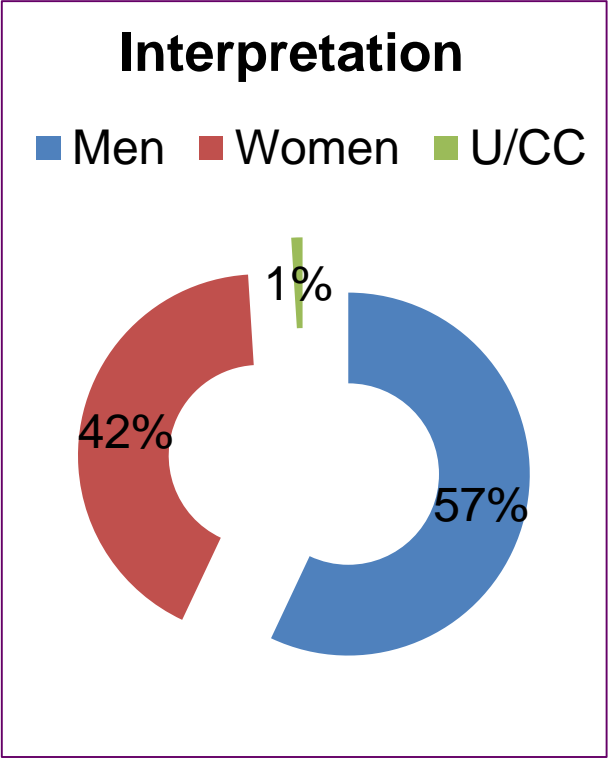
COFAE



COFAE



Analysis of the Programming



COFAE



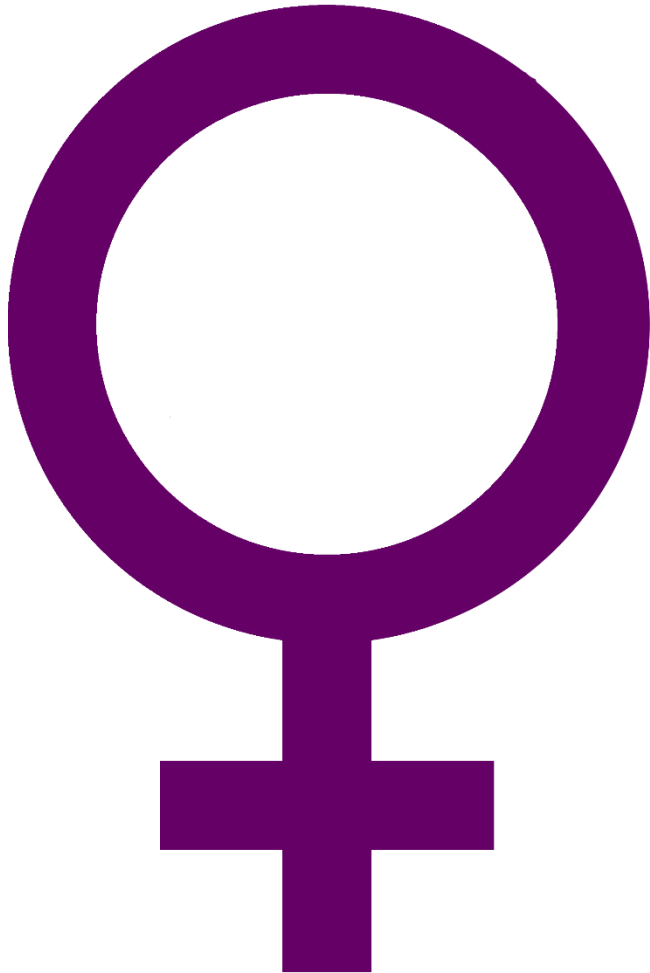
Analysis of the Programming



- Composition
- Musical Direction
- Author/Version
- Direction/Choreography
- Technical Direction
- Stage Design
- Interpretation



Analysis of the Programming



- Distribution
- Costume Design

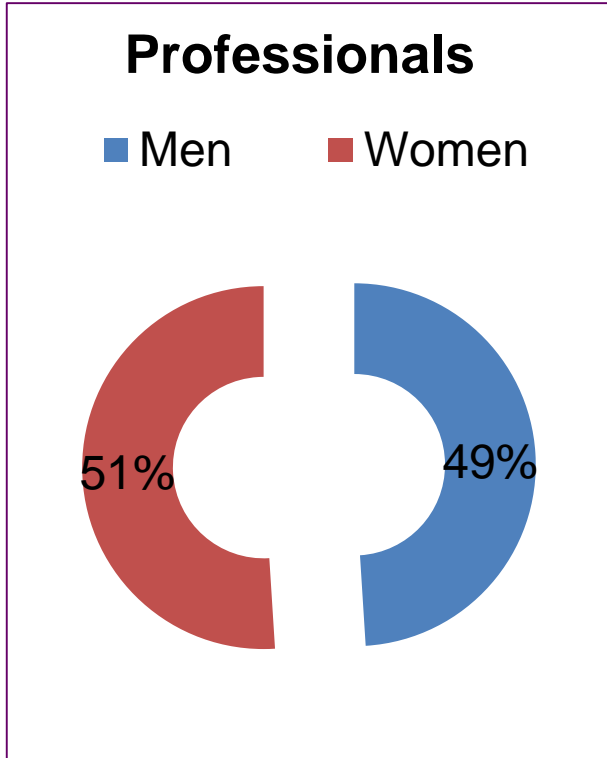


Analysis of the Organization

	Classic & Modern	COFAE
Season	2015-2016	2016
Venues	24 public theaters	16 performing arts market
Professionals	Unknown	145



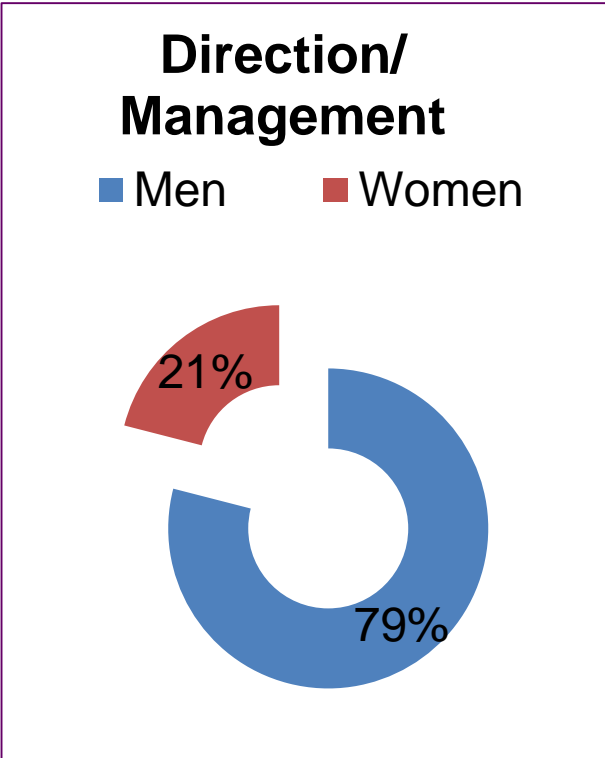
Analysis of the Programming



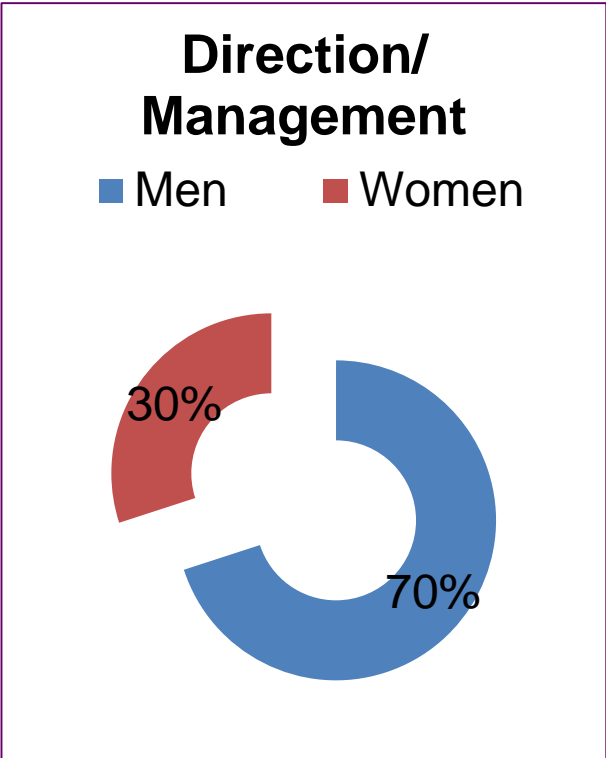
COFAE



Analysis of the Organization



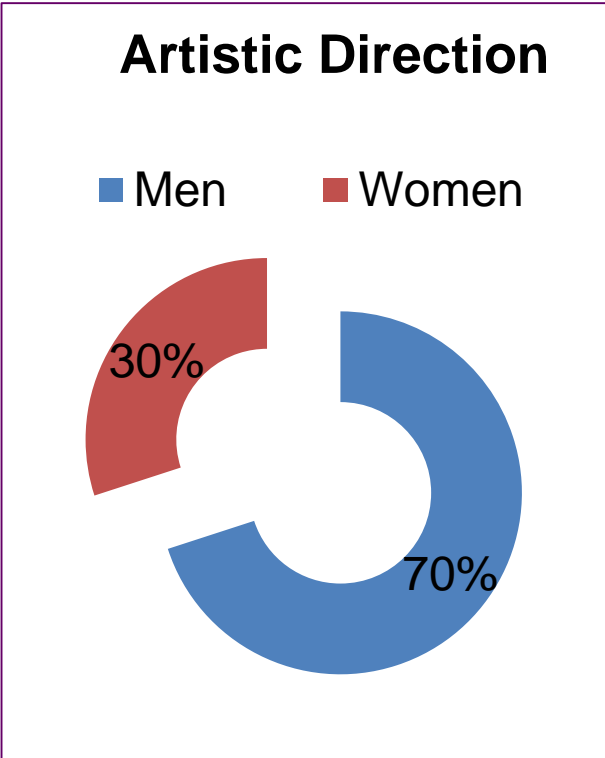
Classic & Modern



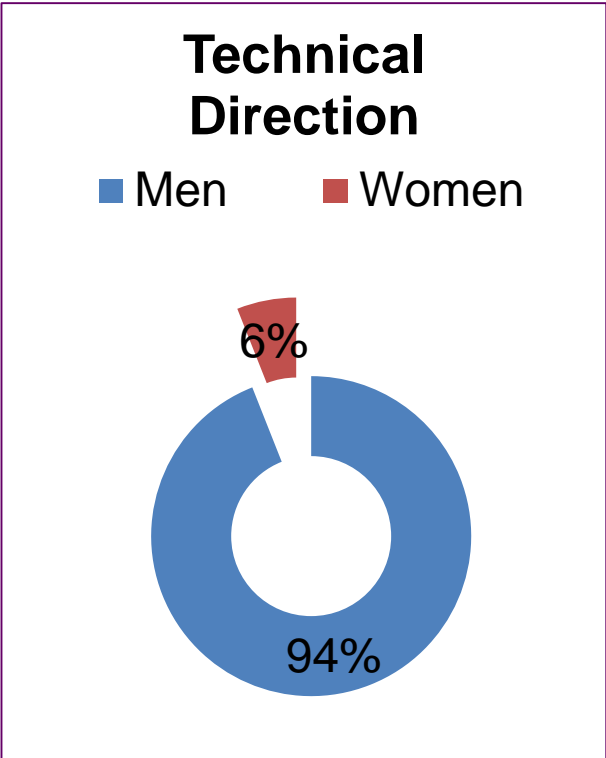
COFAE



Analysis of the Organization



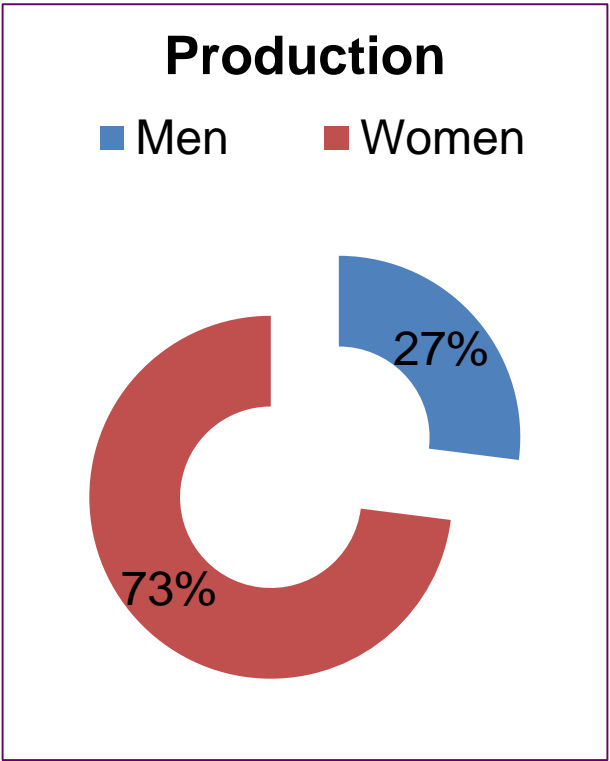
COFAE



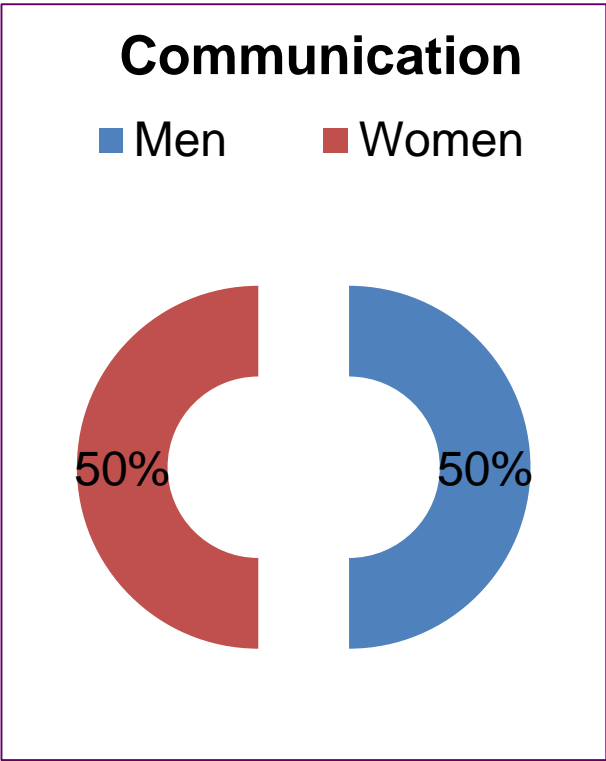
COFAE



Analysis of the Organization



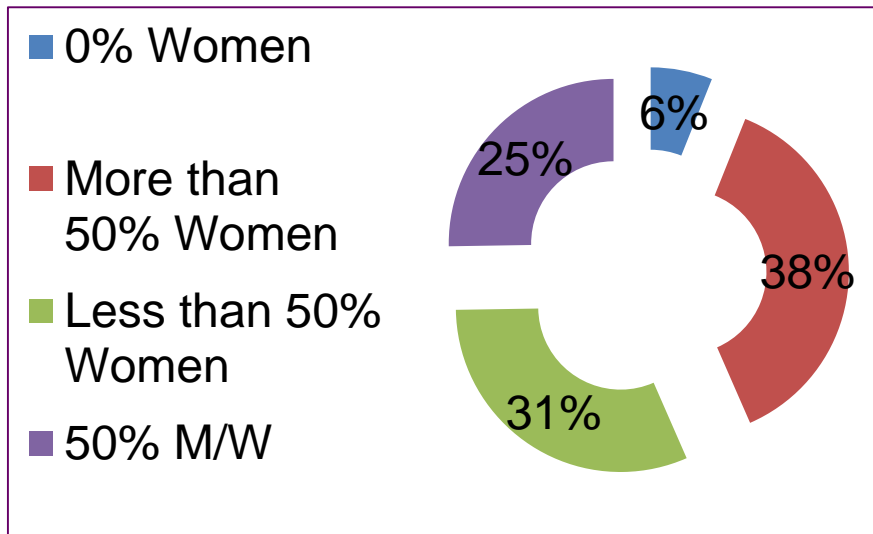
COFAE



COFAE



Analysis of the Organization



COFAE

- 100% of Direction/ Management are men
- 75% Women work only in production
- 67% of Direction/ Management are women



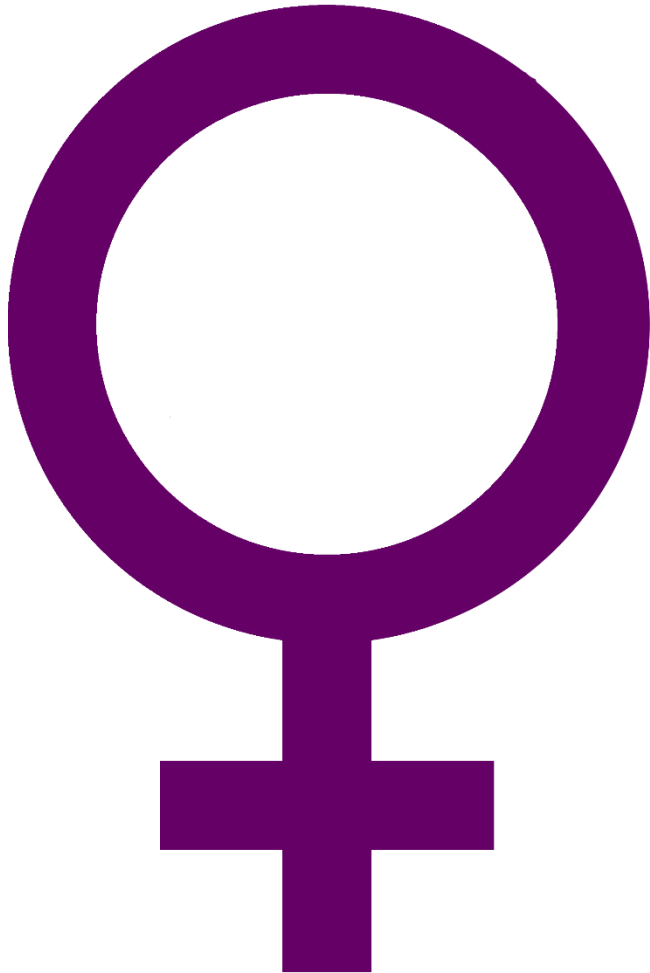
Analysis of the Organization



- Technical Direction
- Direction/Management
- Artistic Direction
- Communication



Analysis of the Organization



- Production
- Communication

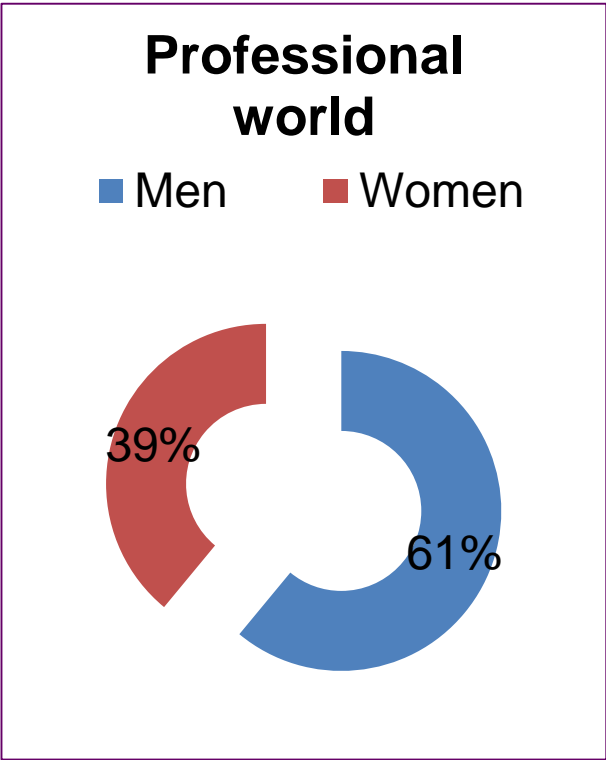
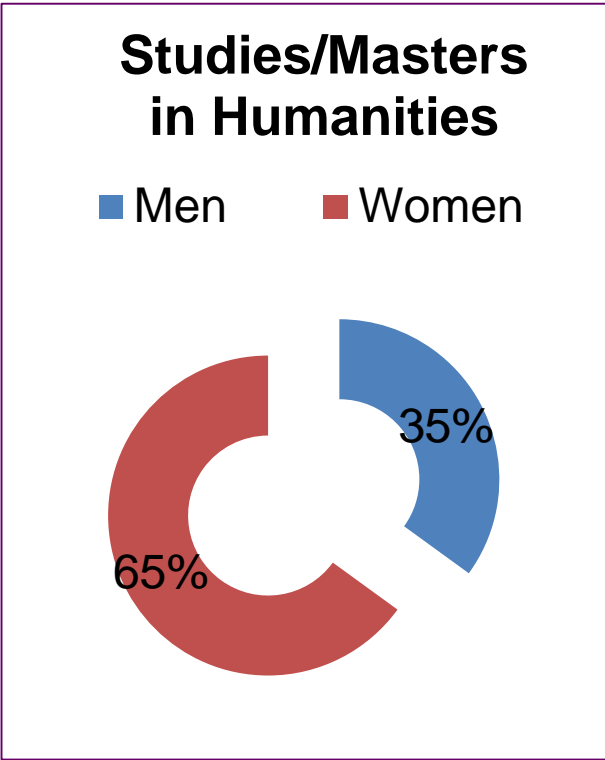


What's next?

- Equality WM Seasons in performing arts (Classic & Modern) based on Mouvement HF (France).
- Objective: To urge cultural organizations to implement the principles of gender equality.
- How to participate: By signing the Equal WM Letter for a 3 years period. Areas: Management, Communication and Production.
- Classic & Modern offers workshops, researchs and exchanges of experiences.
- 52 cultural organizations have signed the Equal WM Letter



Further Information

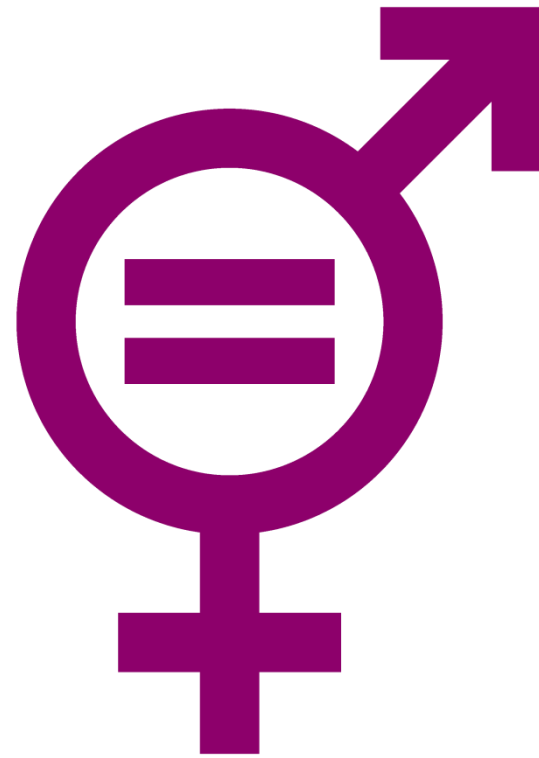


The state of culture in Spain (2014 data)
Fundación Alternativa (2017)



Further Information

- Spain: Organic Law 3/2007 for the real equality between women and men.
 - ✓ Article 26: *“Public authorities, within its area of responsibility, will supervise for the real equality of treatment and opportunities between men and women with regard to the artistic and intellectual creation and production, and its dissemination”.*



Thank you!